

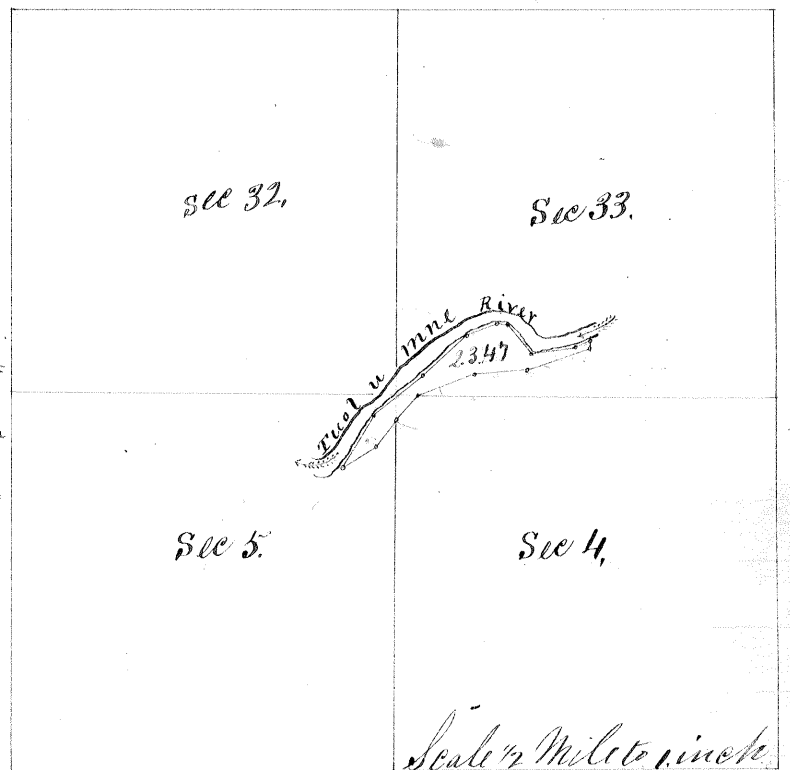
County Surveyors Office

Stanislaus County Cal

Swamp and Overflowed Lands.

Survey N^o 136 correction of Survey N^o 61
Township 3 and 4 South

Range 10 East

(a) Section 32, 33, 4 & 5 all between the U.S. meander line and the left bank of the Suolunne River in the East $\frac{1}{2}$ of Section 32 & the West $\frac{1}{2}$ of Section 33 Township 3 South and the West $\frac{1}{2}$ of Section 4 and the East $\frac{1}{2}$ of the E $\frac{1}{2}$ of Section 5 Township 4 South Range 10 EastBase and Meridian of Mount Diablo
Containing 23.47 AcresSurveyed July 18th 1860, for
William Sharp

Field Notes

Beginning at meander post on line between sections 4 & 5. Thence run on the United States meander line N 42° E. 6.61 ch. N 70° E 12.30 ch. N 84° E. 11.00 ch. N 71° E 13.82 ch. to the $\frac{1}{4}$ section line thence run on $\frac{1}{4}$ section line North 150 ch to the left bank of the Suolunne River, meander down stream, run S 63° W. 38.2 ch. S 81° W 9.37 ch. N 39° W 8.00 ch. N 75° W 2.00 ch. S 68° W 7.20 ch. S 46° W 13.45 ch. S 47° W 11.75 ch. S 33° W 12.00 ch to the United States meander line, thence run on the United States meander line N 54° E 8.52 ch. N 36° E 7.00 ch to the place of beginning. The above was embraced in Survey N^o 61 made for William Sharp on the 26th of December 1856.
Run by the true Meridian: Magnetic Variation 15.25. East.

Surveyed in accordance with the Act of the Legislature concerning Swamp and Overflowed Lands, approved April 28th 1855. and the instructions of the Surveyor General.

Silas Wilcox

County Surveyor Stanislaus County

Approved March 5th 1860

H. A. Higley

Surveyor General

Recorded March 13th 1860

Silas Wilcox

County Surveyor

Stanislaus County