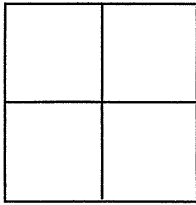


# CORNER RECORD

Agency Index BK 107 PG 84Document Number 11162City of BERKELEY County of ALAMEDA, CaliforniaBrief Legal Description LOT 699, "BERKELEY VIEW TERRACE" (12 M 62)**CORNER TYPE****COORDINATES (Optional)**Government Corner ☐ Control ☐  
Meander ☐ Property ☒  
Rancho ☐ Other ☐

N. \_\_\_\_\_ E. \_\_\_\_\_

Elevation \_\_\_\_\_

Units ☒ Metric ☐ U.S. Survey Foot ☐

Horizontal Datum \_\_\_\_\_

Zone \_\_\_\_\_ Epoch Date \_\_\_\_\_

Date of Survey 3/12/18

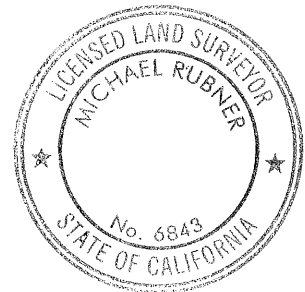
Vertical Datum \_\_\_\_\_

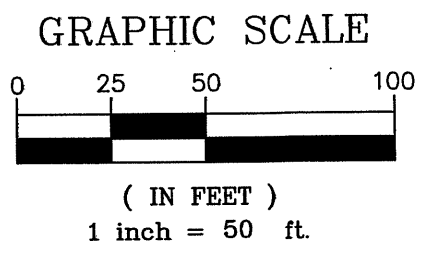
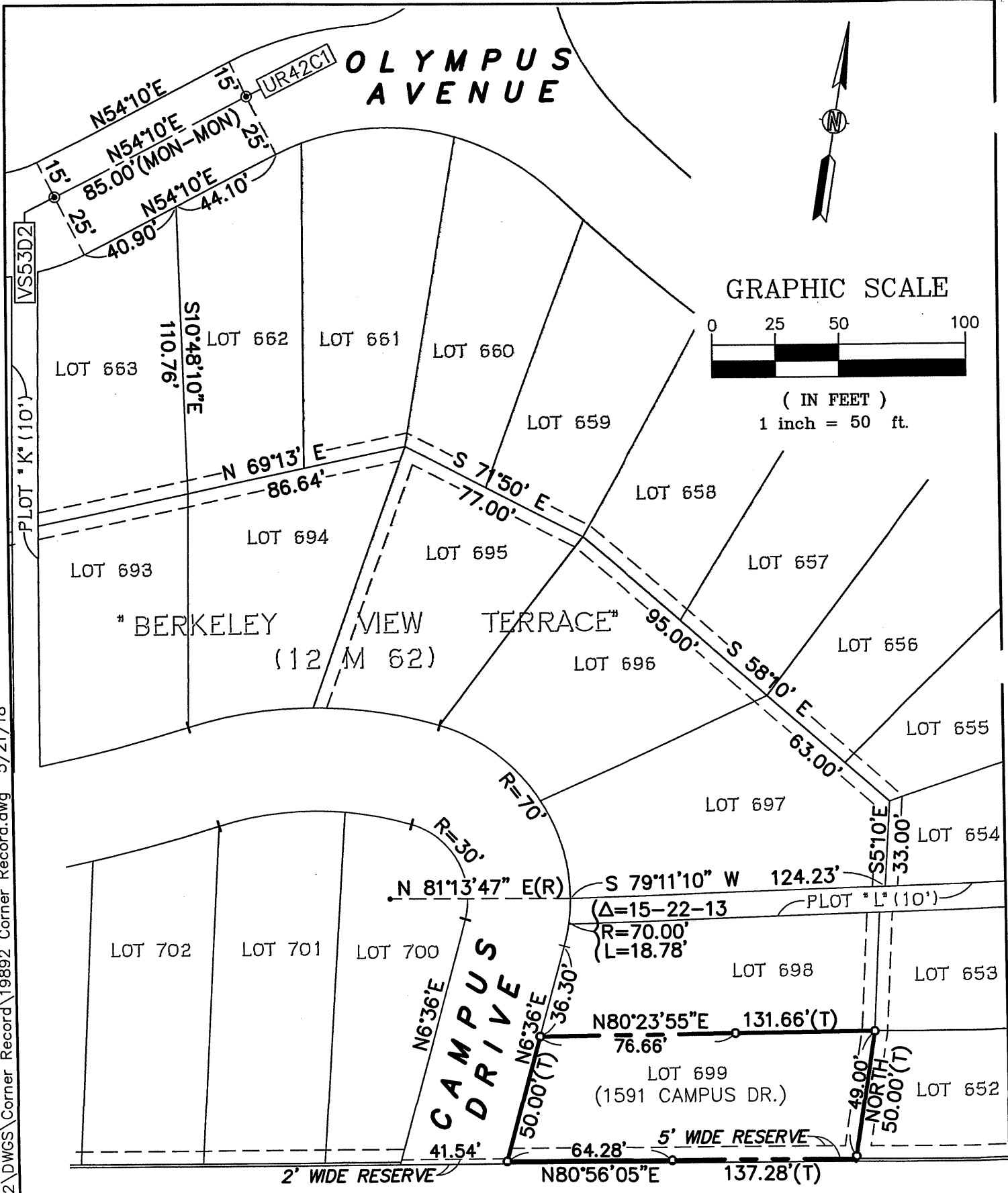
☐ Complies with Public Resources Code §§8801-8819☐ Complies with Public Resources Code §§8801-8902PLS Act Ref.: ☒ **8765(d)** ☐ **8771** ☐ **8773** ☐ **Other:**Corner/Monument: ☐ Left as found ☐ Established ☐ Rebuilt ☐ Pre-Construction☐ Found and tagged ☒ Reestablished ☐ Referenced ☐ Post-Construction

Narrative of corner identified and monument as found, set, reset, replaced, or removed.

☒ See sheet #2 for description(s)**SURVEYOR'S STATEMENT**

This Corner Record was prepared by me or under my direction in conformance with

the Professional Land Surveyor's Act on MAY 21, 2018Signed *Patrick M. Rei* P.L.S. or R.C.E. No. 8178**COUNTY SURVEYOR'S STATEMENT**This Corner Record was received 30 MARCH, 2018and examined and filed 15 JUNE 2018Signed *Michael Rubner* P.L.S. or R.C.E. No. 6843Title COUNTY SURVEYOR**County Surveyor's Comment**



**LEGEND:**

- AA##A# -FOUND CITY MONUMENT
- -SET 5/8" REBAR AND CAP, LS 8178
- (T) -TOTAL DISTANCE