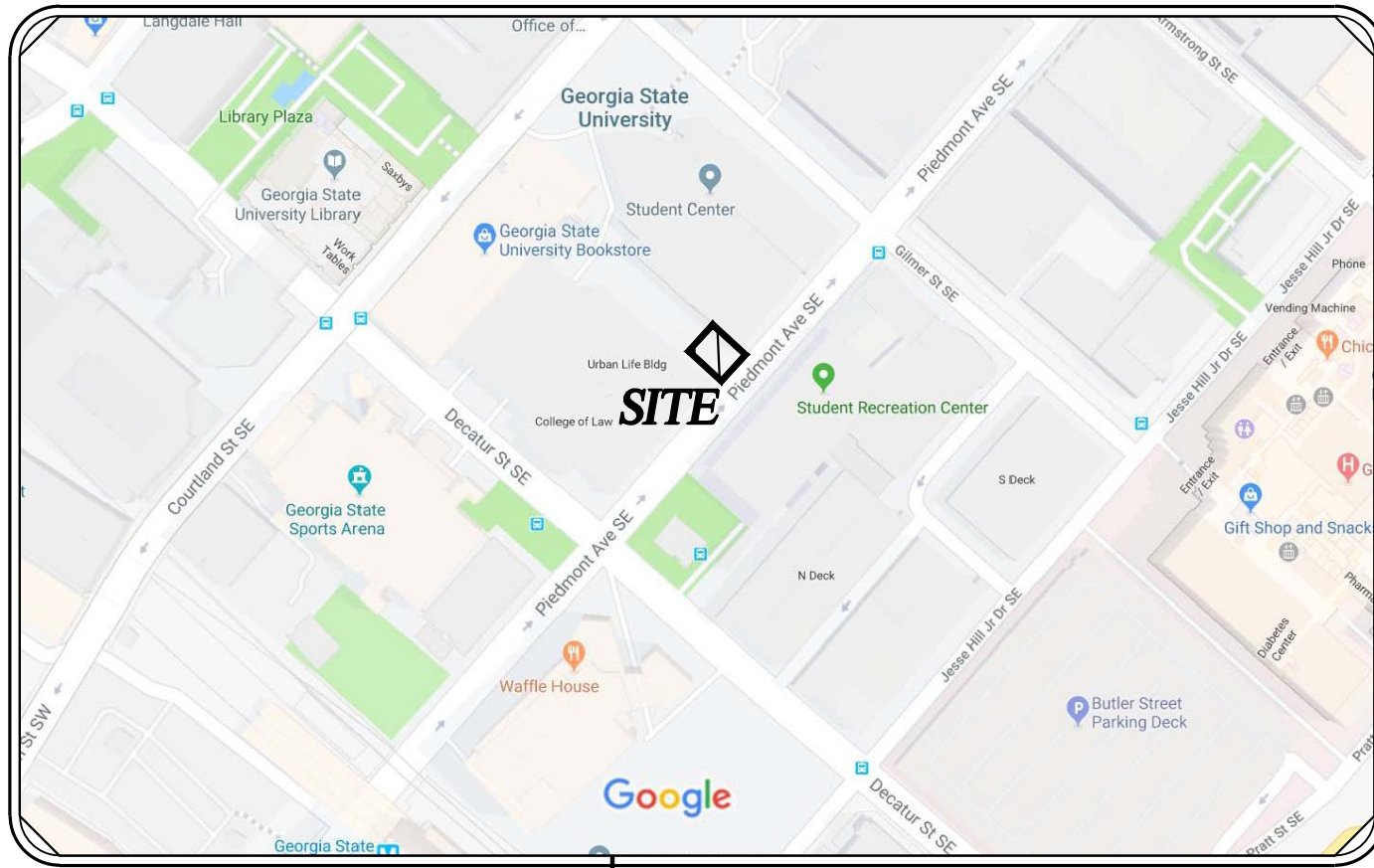
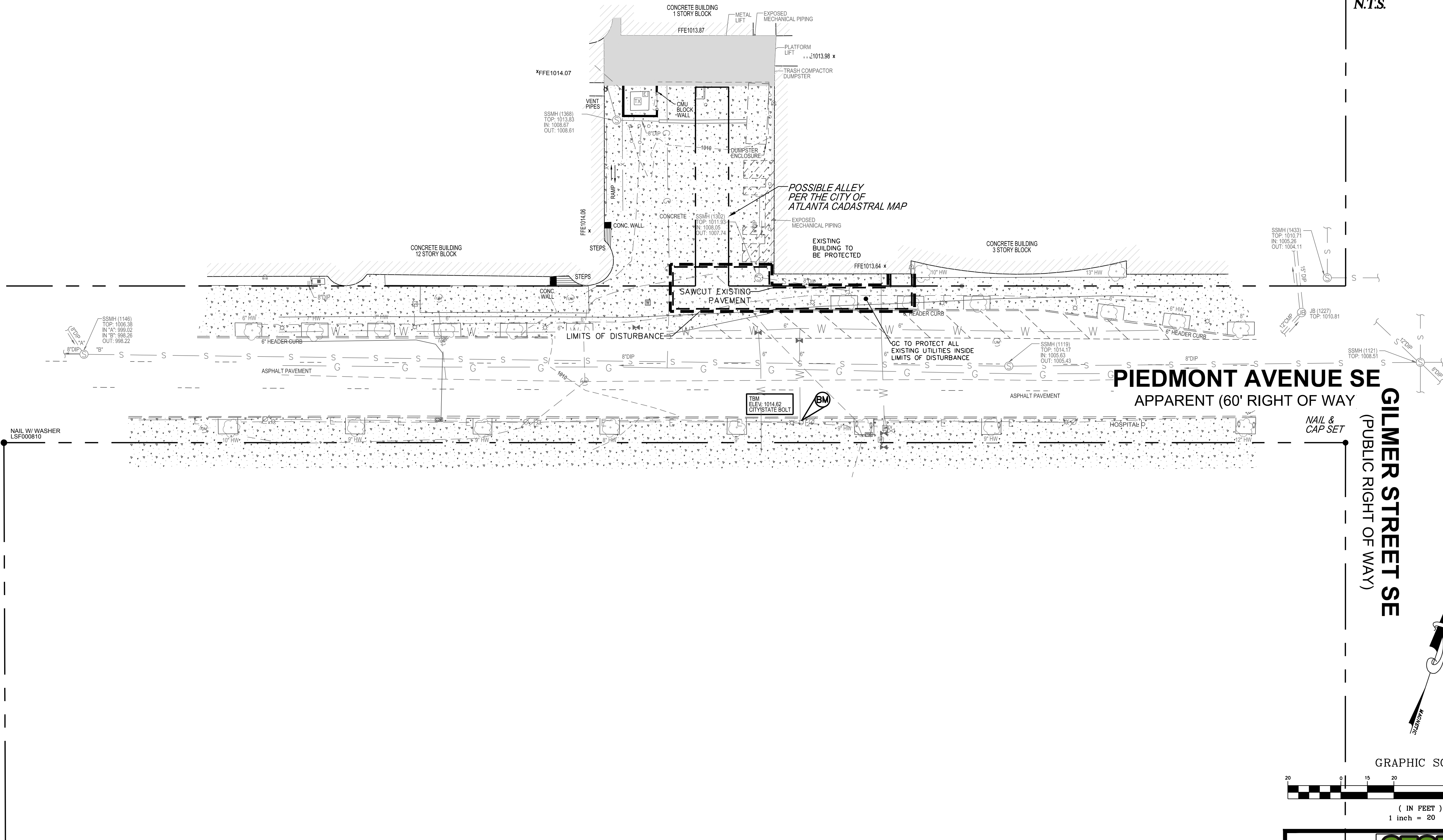


NOTES

1. DEMOLITION INCLUDES BUT IS NOT LIMITED TO THE FOLLOWING: REMOVAL OF ASPHALT PAVING, EXISTING TREES, POWER LINES, GAS MAINS, WATER LINES, FIRE HYDRANTS, STORM PIPING, DRAINAGE STRUCTURES, FOUNDATIONS, STRUCTURES, SIDEWALKS, STRIPING, CURB AND GUTTER, LIGHT POLES, AND POWER POLES
2. COORDINATE WITH REMAINDER OF CONSTRUCTION DOCUMENTS PRIOR TO START OF CONSTRUCTION
3. EBERLY & ASSOCIATES DOES NOT MAKE ANY REPRESENTATION, WARRANTY, ASSURANCE OR GUARANTEE THAT THE EXISTING UTILITY INFORMATION SHOWN IS CORRECT, ACCURATE OR COMPLETE. IT SHALL BE THE RESPONSIBILITY OF THE CONTRACTOR TO ARRANGE FOR THE FIELD LOCATION AND PROTECTION OF ALL OVERHEAD AND SUBSURFACE LINES AND FACILITIES WHICH MAY BE ENCOUNTERED DURING THE COURSE OF THE EXCAVATION, DEMOLITION OR UTILITY WORK.



LOCATION MAP
N.T.S.



CALL 811
FREE THROUGHOUT
THE U.S.A.
THREE WORKING DAYS
BEFORE YOU DIG.

GEORGIA811
www.Georgia811.com
Know what's below.
Call before you dig.



PANDA RESTAURANT GROUP INC.
1683 Walnut Grove Ave.
Rosemead, California
91770
Telephone: 626.799.9898
Facsimile: 626.372.8288

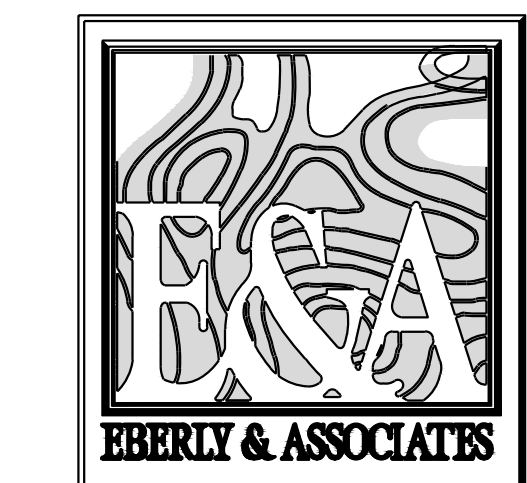
All ideas, designs, arrangement and plans indicated or represented by this drawing are the property of Panda Express Inc. and were created for use on this specific project. None of these ideas, designs, arrangements or plans may be used by or disclosed to any person, firm, or corporation without the written permission of Panda Express Inc.

REVISIONS:

ISSUE DATE:

DRAWN BY:

PANDA PROJECT # U1-18-D5453
ARCH PROJECT #:



TEL: 770.452.7849 FAX: 770.452.0086
2951 FLOWERS ROAD SOUTH, STE 119
ATLANTA, GEORGIA 30341
WWW.EBERLY.NET

PANDA EXPRESS

GEORGIA STATE UNIVERSITY
33 GILMER STREET
ATLANTA, GA 30302

DEMOLITION
PLAN

C2.0