

THIS MAP CORRECTLY REPRESENTS A SURVEY  
MADE BY ME OR UNDER MY DIRECTION IN CONFORM-  
ANCE WITH THE REQUIREMENTS OF THE LAND SURVEY-  
OR'S ACT AT THE REQUEST OF GOOSE HILL GUN CLUB  
IN JULY, 1980.

*V. J. Gretzinger*  
V. J. GRETZINGER, R.C.E. 1061

THIS MAP HAS BEEN EXAMINED FOR CONFORMANCE WITH THE REQUIREMENTS OF THE LAND SURVEYOR'S ACT THIS 18 DAY OF Aug. 1980.

COUNTY SURVEYOR Gary L. Caldwell R.C.E  
By C. Lee DeLange 20802  
Deputy C. Lee DeLange L.S. 4066

RECORDER'S CERTIFICATE  
FILED THIS 19<sup>th</sup> DAY OF August, 1980 AT 9:07AM  
IN BOOK 33 OF MAPS AND PLATS AT PAGE 80  
AT THE REQUEST OF V.J. GRETZINGER. \$15.00 pd

Sheldon D. Johnson By: M. Arnesen-Deputy  
COUNTY RECORDER

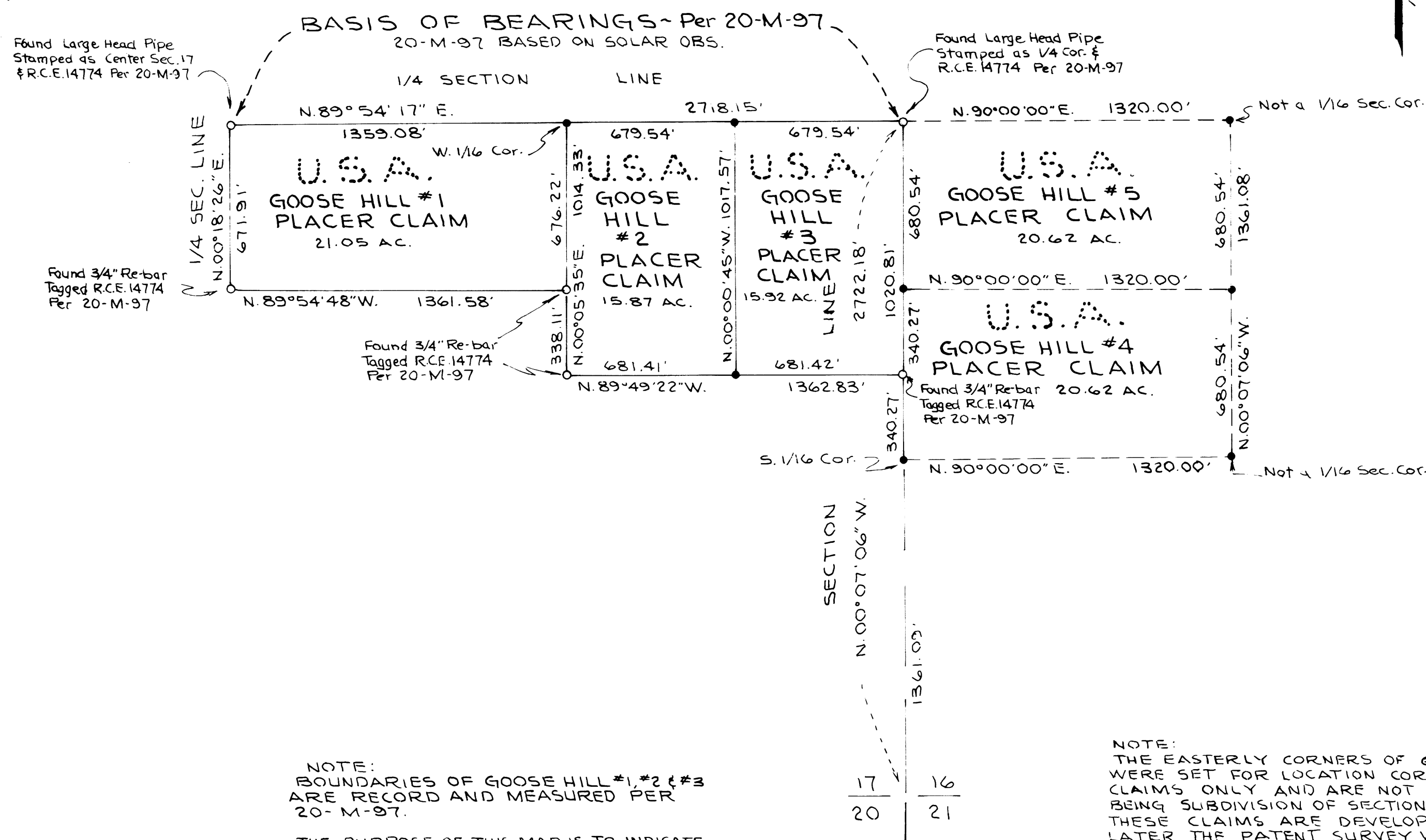
• INDICATES A 3/4" RE-BAR TAGGED R.C.F. 10761  
AND SET ON THIS SURVEY.  
O INDICATES A MONUMENT AS NOTED.

FOR: GOOSE HILL GUN CLUB  
PORTION OF THE W. 1/2 OF SEC. 16; &  
A PORTION OF THE S.E. 1/4 OF SEC. 17,  
T.5 N., R.10 E., M.D.M.

AMADOR COUNTY CALIFORNIA  
SCALE: 1"=400' JULY, 1980

V. J. GRETZINGER  
CIVIL ENGINEER  
8-COURT ST., JACKSON, CA.

DRAWN BY: F.E. WILKE



NOTE:  
BOUNDARIES OF GOOSE HILL #1, #2 & #3  
ARE RECORDED AND MEASURED PER  
20-M-97.

THE PURPOSE OF THIS MAP IS TO INDICATE  
THE FIVE MINING CLAIMS FILED ON BY  
RICHARD L. DECHAMBEAU & MICHAEL W. DECHAMBEAU  
ON JULY 28, 1980.

NOTE:  
THE EASTERLY CORNERS OF GOOSE HILL #4 & #5  
WERE SET FOR LOCATION CORNERS OF MINING  
CLAIMS ONLY AND ARE NOT REPRESENTED AS  
BEING SUBDIVISION OF SECTION CORNERS. IF  
THESE CLAIMS ARE DEVELOPED AND PATENTED  
LATER THE PATENT SURVEY WOULD SUBDIVIDE  
THE SECTION AND ESTABLISH THE SUBDIVISION  
CORNERS.

MINING LAW MAKES PROVISION FOR STAKING CLAIMS WITHOUT PRECISE SURVEY UNTIL PATENT PROCEEDING ARE INSTITUTED.