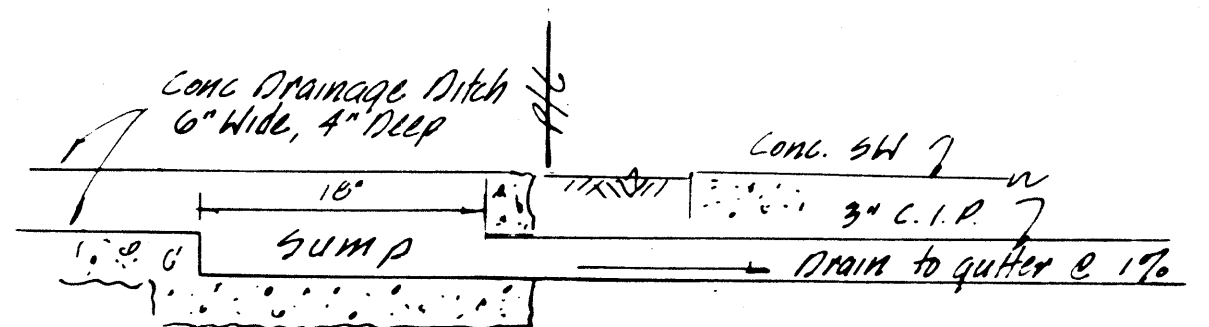
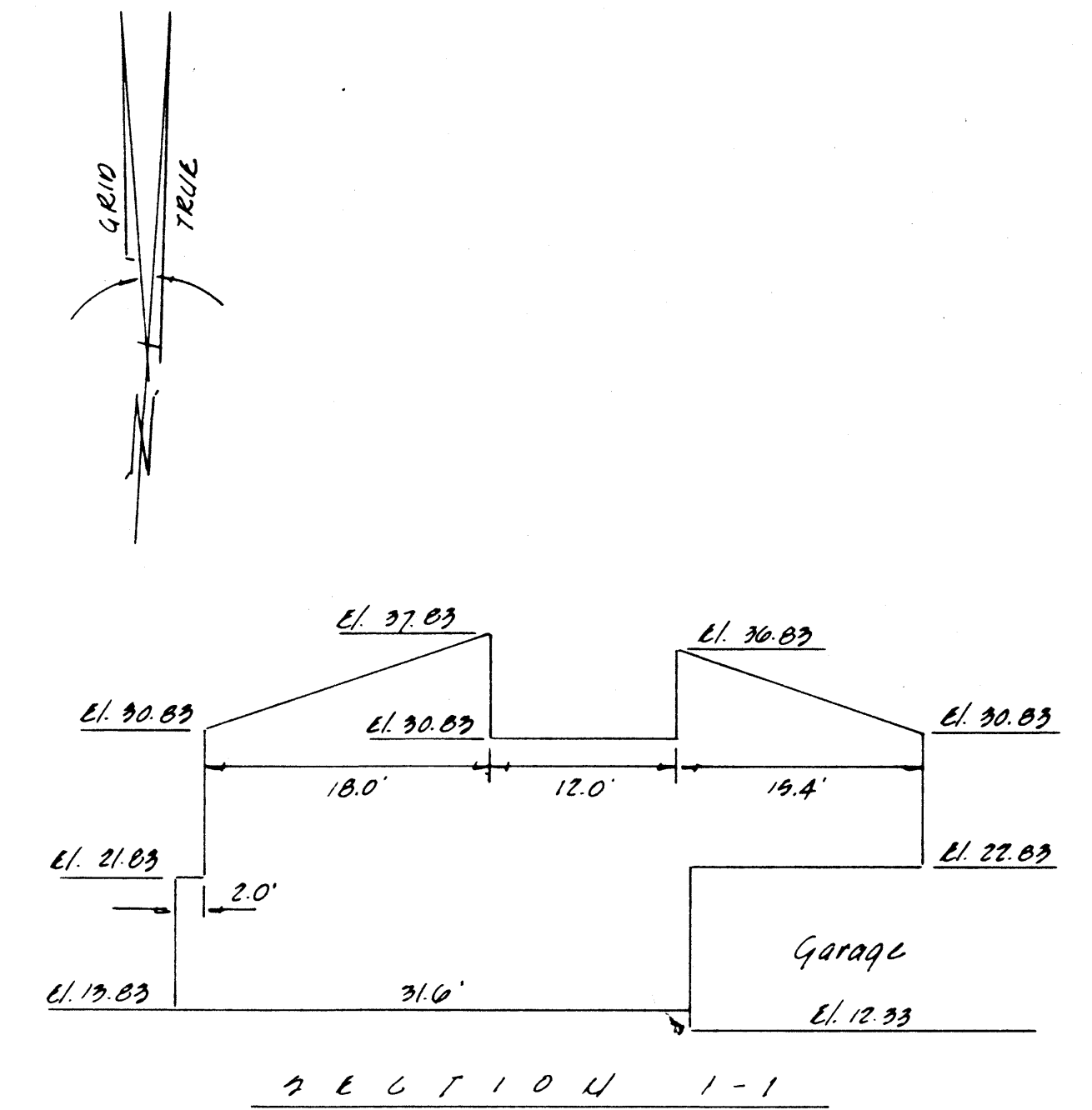
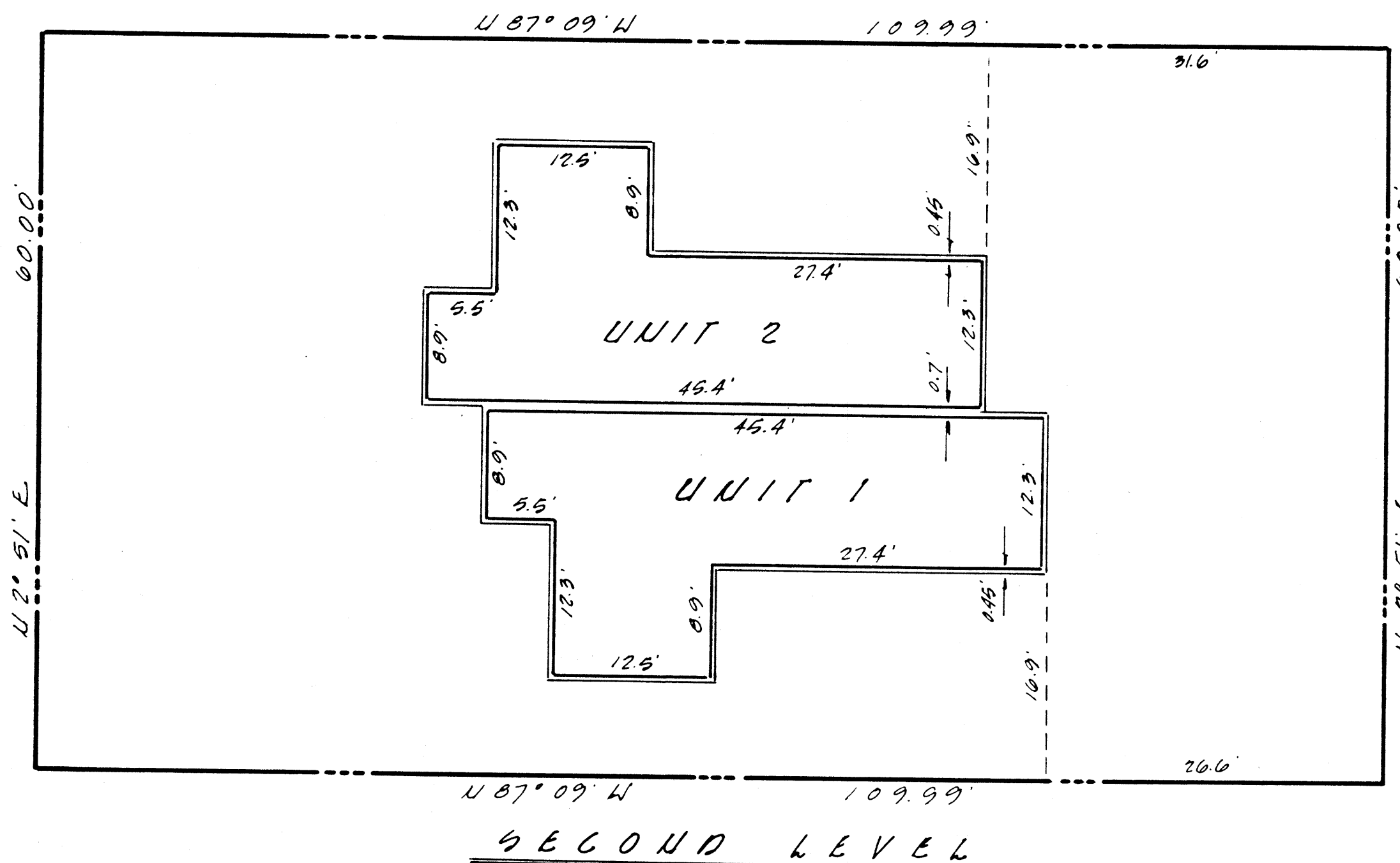
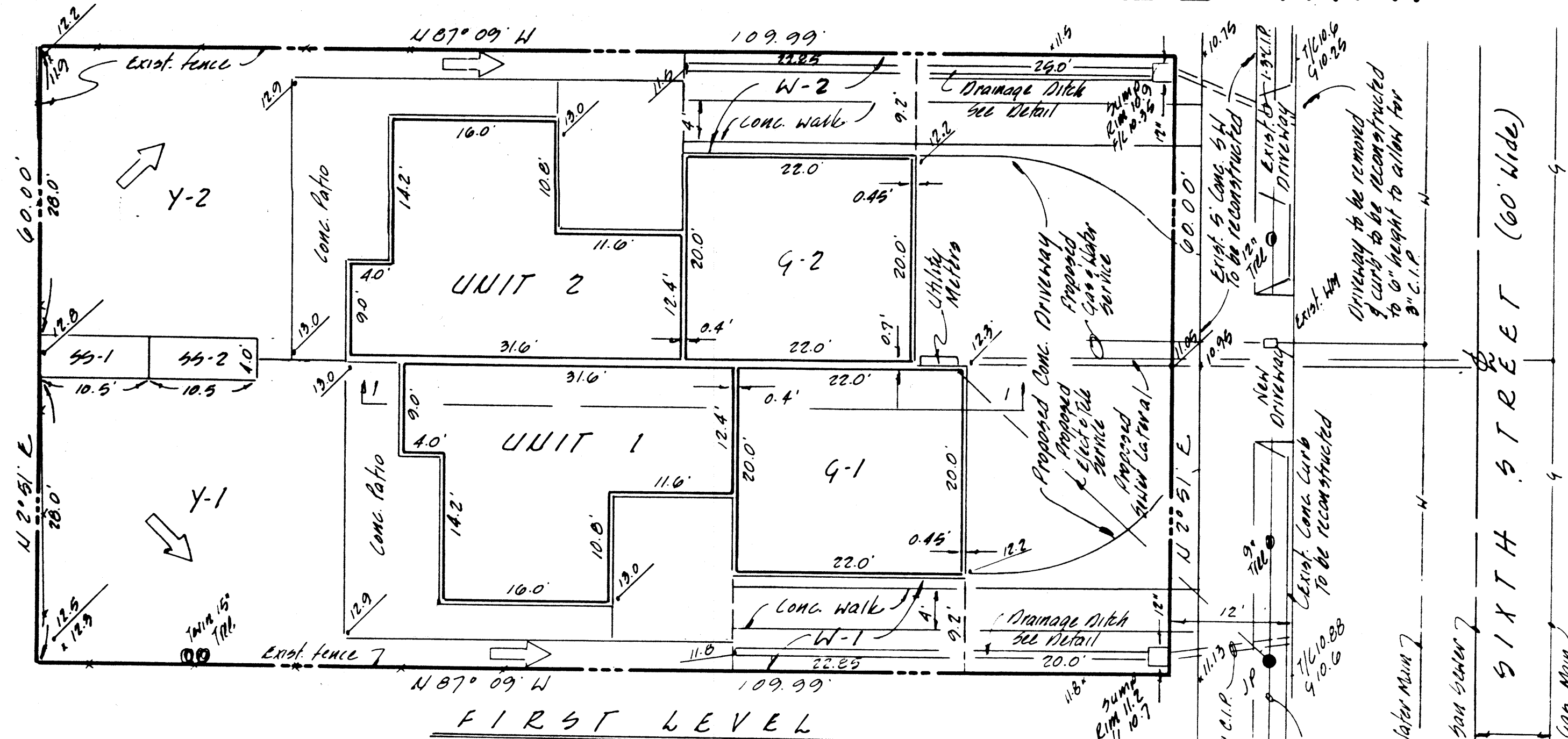


# PARCEL MAP



- LEGEND**
- G Garage area
  - W Walkway easement
  - Y Yard area
  - SS Storage space

## CONDOMINIUM PLAN

### PARCEL MAP NO. 3598

A SUBDIVISION OF PROPERTY AT 1017 SIXTH STREET FOR TWO CONDOMINIUM UNITS ALAMEDA, CALIFORNIA

FOR TOSHIO & HATSUKO MITSUDA

BY BATES AND BAILEY, LAND SURVEYORS

DATE JUNE 1981

SCALE: 1" = 10'

SHEET 2 OF 2

84-012330

411530

Filed 1/19/84

141/94

76/141 PM 3598

MAP BOOK 141 PAGE 94