

1. STONE SIZE - USE (2) INCH STONE, OR RECLAIMED OR RECYCLED EQUIVALENT.
2. LENGTH - AS REQUIRED, BUT NOT LESS THAN (50) FEET.
3. THICKNESS - NOT LESS THAN SIX (6) INCHES.
4. WIDTH - TWENTY (20) FOOT MINIMUM, BUT NOT LESS THAN THE FULL WIDTH AT POINTS WHERE INGRESS OR EGRESS OCCURS.
5. FILTER CLOTH - WILL BE PLACED OVER THE ENTIRE AREA PRIOR TO PLACING OF STONE.
6. SURFACE WATER - ALL SURFACE WATER FLOWING OR DIVERTED TOWARD CONSTRUCTION ENTRANCES SHALL BE PIPED ACROSS THE ENTRANCE. IF PIPING IS IMPRACTICAL, A MOUNTABLE BERM WITH 3:1 SLOPES WILL BE PERMITTED.
7. MAINTENANCE - THE ENTRANCE SHALL BE MAINTAINED IN A CONDITION WHICH WILL PREVENT TRACKING OR FLOWING OF SEDIMENT ONTO PUBLIC RIGHTS-OF-WAY. THIS MAY REQUIRE PERIODIC TOP DRESSING WITH ADDITIONAL STONE AS CONDITIONS DEMAND AND REPAIR AND/OR CLEANOUT OF ANY MEASURES USED TO TRAP SEDIMENT. ALL SEDIMENT SPILLED, DROPPED, WASHED OR TRACKED ONTO PUBLIC RIGHTS-OF-WAY MUST BE REMOVED IMMEDIATELY.
8. WASHING - WHEELS SHALL BE CLEANED TO REMOVE SEDIMENT PRIOR TO ENTRANCE ONTO PUBLIC RIGHTS-OF-WAY. WHEN WASHING IS REQUIRED, IT SHALL BE DONE ON AN AREA STABILIZED WITH STONE AND WHICH DRAINS INTO AN APPROVED SEDIMENT TRAPPING DEVICE.
9. PERIODIC INSPECTION AS NEEDED MAINTENANCE SHALL BE PROVIDED AFTER EACH RAIN.

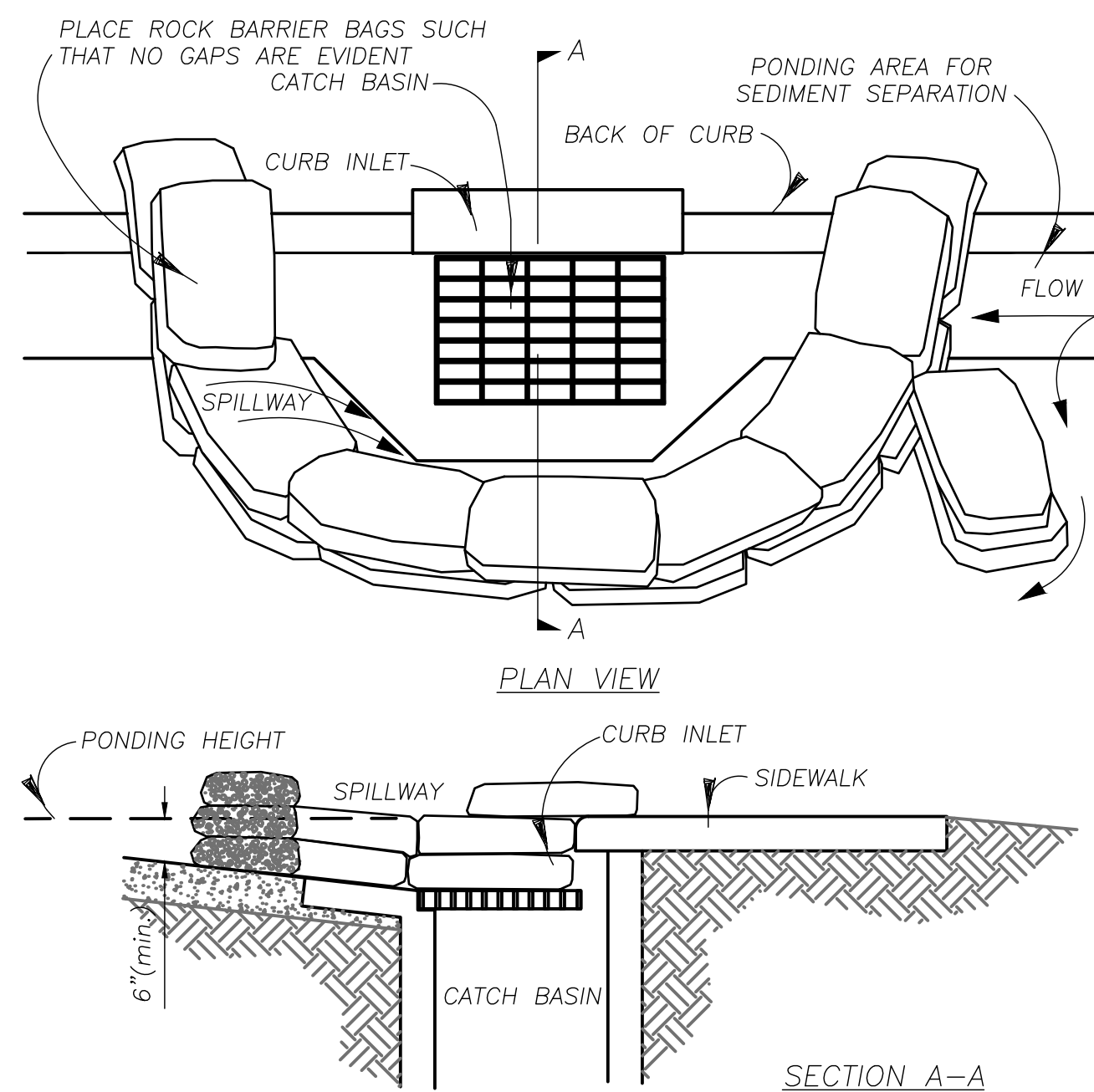
-
- Diagram illustrating the structure of an Outpak Concrete Washout. The structure is a rectangular frame made of reinforced 20 mil PVC, with dimensions 6' to 8' in width and 8' to 10' in length. It is supported by 1.2' high concrete blocks. The structure is reinforced with #3 rebar L-brackets and staples. A sign on the left reads "OUTPAK CONCRETE WASHOUT".
- NOTES:**
1. THE CONCRETE WASHOUT AREA SHALL BE INSTALLED PRIOR TO ANY CONCRETE PLACEMENT ON THIS PROJECT.
 2. SIGNS SHALL BE PLACED AS NECESSARY TO CLEARLY INDICATE THE LOCATION OF THE CONCRETE WASHOUT.
 3. THE CONCRETE WASHOUT AREA WILL BE REPLACED AS NECESSARY TO MAINTAIN CAPACITY FOR WASTE CONCRETE AND OTHER LIQUID WASTE.
 4. WASHOUT RESIDUE SHALL BE REMOVED FROM THE SITE AND DISPOSED OF AT AN APPROVED WASTE SITE.
 5. DO NOT MIX EXCESS AMOUNTS OF FRESH CONCRETE OR CEMENT ON-SITE.
 7. DO NOT DUMPING EXCESS CONCRETE IN NON-DESIGNATED DUMPING AREAS.
 8. LOCATE WASHOUT AREA AT LEAST 50' (15 METERS) FROM STORM DRAINS, OPEN DITCHES, OR WATERBODIES.
 9. WASH OUT ONLY WASHOUT NON-HAZARDOUS WASTES INTO THE OUTPAK WASHOUT.
- Outpak Washout**

-

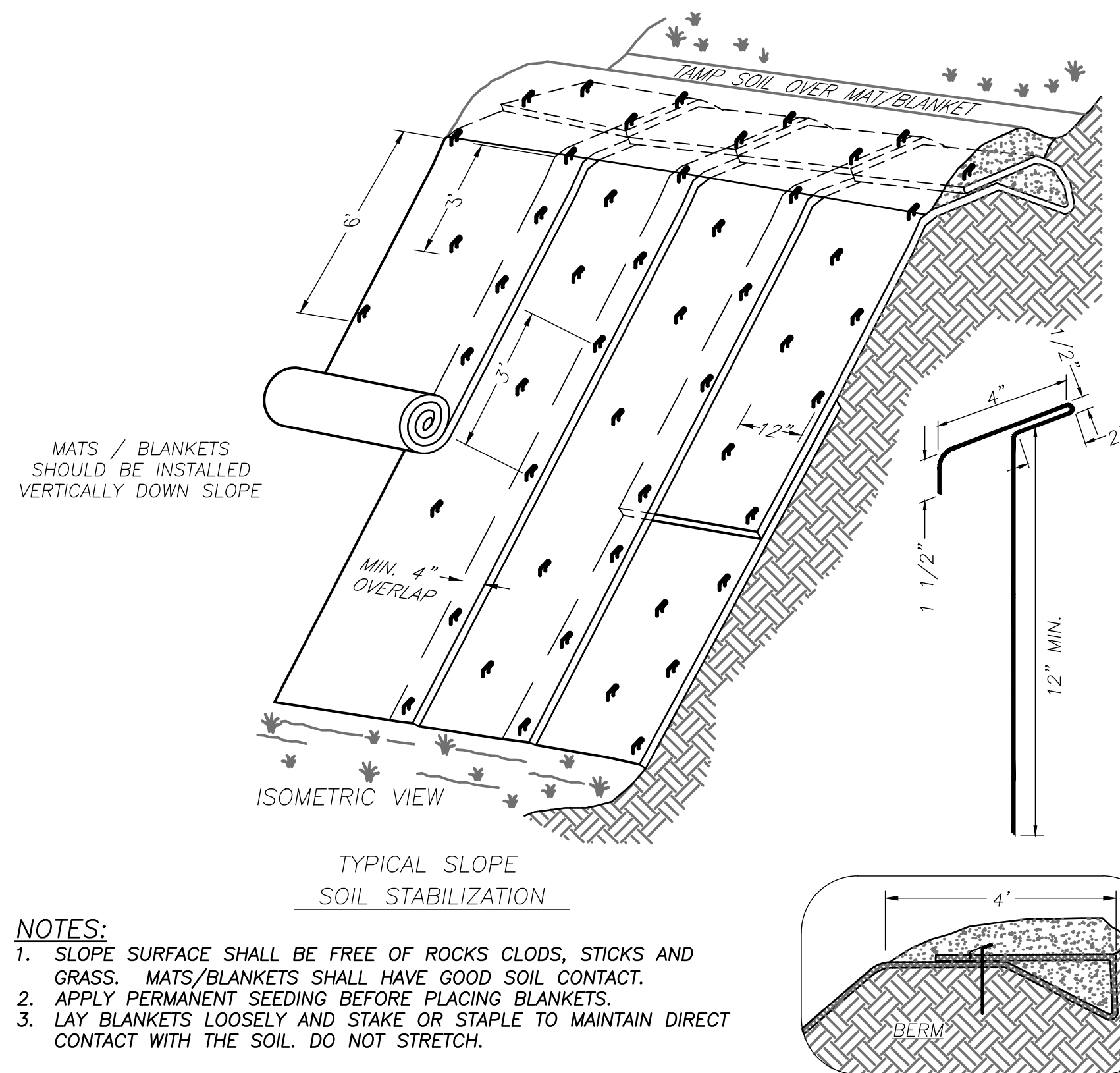
101 Temporary Construction Entrance

102 Concrete Washout

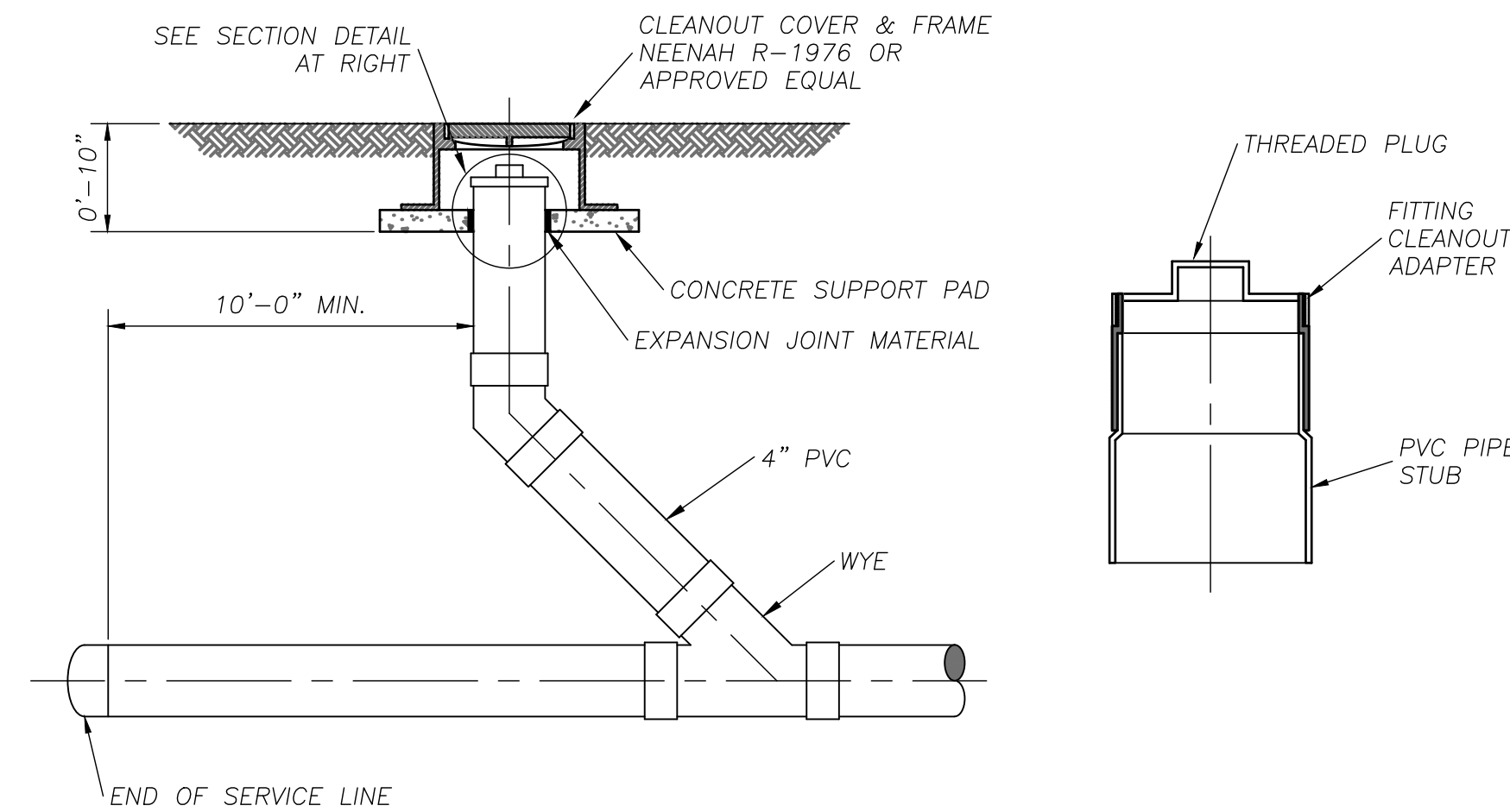
103 *Filter Fabric Silt Fence*



- NOTES:
1. PLACE CURB TYPE ROCK BAG BARRIER ON GENTLY SLOPING STREET, WHERE WATER CAN POND AND ALLOW SEDIMENT TO SEPARATE FROM RUNOFF.
 2. BAGS OF WOVEN GEOTEXTILE FABRIC, FILLED WITH GRAVEL MUST BE LAYERED SUCH THAT NO GAPS ARE EVIDENT.
 3. LEAVE ONE RANDO BAG CAP IN THE TOP ROW ON THE SIDE AWAY FROM FLOW, TO PROVIDE A PILE-UP OR IN THE CENTER IF PONDING IS NEEDED ON BOTH SIDES.
 4. INSPECT BARRIERS AND REMOVE SEDIMENT AFTER EACH STORM EVENT, SEDIMENT AND GRAVEL MUST BE REMOVED FROM THE TRAVELED WAY IMMEDIATELY



- NOTES:
1. SLOPE SURFACE SHALL BE FREE OF ROCKS CLODS, STICKS AND GRASS. MATS/BLANKETS SHALL HAVE GOOD SOIL CONTACT.
 2. APPLY PERMANENT SEEDING BEFORE PLACING BLANKETS.
 3. LAY BLANKETS LOOSELY AND STAKE OR STAPLE TO MAINTAIN DIRECT CONTACT WITH THE SOIL. DO NOT STRETCH.



BHC RHODES
Civil Engineering • Surveying • Utilities
7101 College Blvd., Suite 400
Overland Park, Kansas 66210
p. (913) 663-1900 f. (913) 663-1633
BHC RHODES is a trademark of Brungardt Honomichi & Company, P.A.



PANDA EXPRESS, INC.
1683 Walnut Grove Ave.
Rosemead, California
91770
Telephone: 626.799.9898
Facsimile: 626.372.8288

All ideas, designs, arrangement and plans indicated or represented by this drawing are the property of Panda Express Inc. and were created for use on this specific project. None of these ideas, designs, arrangements or plans may be used by or disclosed to any person, firm, or corporation without the written permission of Panda Express Inc.

REVISIONS:

[illegible]

ISSUE DATE:

1ST	SITE PLAN REVIEW	02-16-21
2ND	PERMIT/BID SET	04-09-21

DRAWN BY:

PANDA PROJECT #:	S8-22-D8193
PANDA STORE #:	-
ARCH PROJECT #:	20044.021



hckloverarchitect
8813 PENROSE LANE, SUITE 400
LENEXA, KS 66219
ph: 913.649.8181 • fx: 913.649.1275

PANDA EXPRESS
TRUE WARM & WELCOME
1485 MAIN ST.
HAMILTON, OH 45013

CIVIL DETAILS 3

C6.2

TRUE WARM & WELCOME 2300 R5