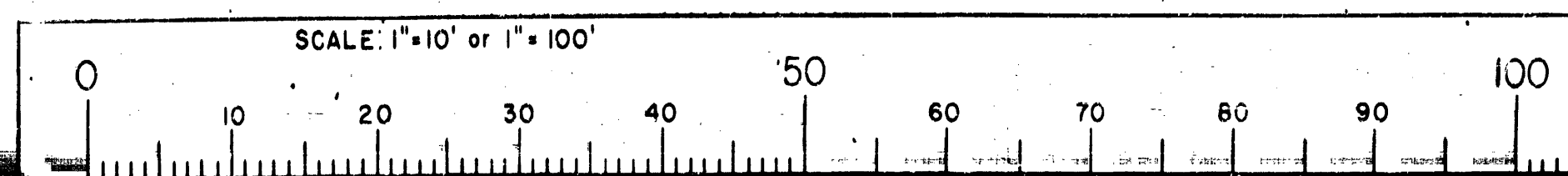


3 4 3



BASIS OF BEARINGS
THE MONUMENT LINE OF HEYER AVENUE EASTERLY
OF TRACT 721 WAS TAKEN TO BE N81°56'20"W.

—LEGEND

- ⊙ = ALAMEDA COUNTY MONUMENT
- X = CROSS CUT IN CONCRETE WALL, SET
- = 1" ON PIPE WITH REDWOOD F-LG, NAIL, & TAG, LB 3352, SET
- = NAIL & STAINER, SET

THE BLUE BORDER INDICATES THE BOUNDARY OF THE
LAND SUBDIVIDED BY THIS MAP.

SURVEYOR'S CERTIFICATE

THIS MAP WAS PREPARED BY ME OR UNDER MY DIRECTION AND IS BASED UPON A FIELD SURVEY IN CONFORMANCE WITH THE REQUIREMENTS OF THE SUBDIVISION MAP ACT. AT THE REQUEST OF RUTH W. PEDERSEN ON JUNE 3, 1972, I HEREBY CERTIFY THAT IT CONFORMS TO THE APPROVED TENTATIVE MAP AND THE CONDITIONS OF APPROVAL THEREOF; THAT ALL PROVISIONS OF APPLICABLE STATE LAW AND LOCAL ORDINANCE HAVE BEEN COMPLIED WITH.

(SIGNED AND SEALED) Harold B. Davis
HAROLD B. DAVIS - 9.3352

COUNTY SURVEYOR'S CERTIFICATE

THIS MAP HAS BEEN EXAMINED THIS 26th DAY OF July, 1974
FOR CONFORMANCE WITH THE REQUIREMENTS OF SECTION 11575 & 11629
OF THE SUBDIVISION MAP ACT.

(SIGNED) Herbert G. Crowle
HERBERT G. CROWLE, COUNTY SURVEYOR
R.O.E. No. 6516

RECORDER'S CERTIFICATE

FILED THIS 29TH DAY OF JULY, 1974, AT 10:00 A. M. IN
BOOK 84 OF PARCEL MAPS AT PAGE 22, AT THE REQUEST OF
HERBERT G. CROWLE.

*** USE WITH CAUTION ***
THIS IS A PUBLIC WORKS DEPARTMENT
WORKING COPY OF AN OFFICIAL MAP
ON FILE IN THE OFFICE OF THE COUNTY
RECORDER, COUNTY OF ALAMEDA. OF
FICE INFORMATION OR CALCULATIONS
MAY HAVE BEEN ADDED HEREON.

JACK G. BLAKE
COUNTY RECORDER
BY H. W. H. H. H.
DEPUTY COUNTY RECORDER

AMENDED
PARCEL MAP NO. 879

RUTH H. PEDERSEN. 8016 OR 62 AL 46382
DOUGLAS WHITCOMB RE 3398 IM 87 73-54288
RE 3644 IM 412 74-38978

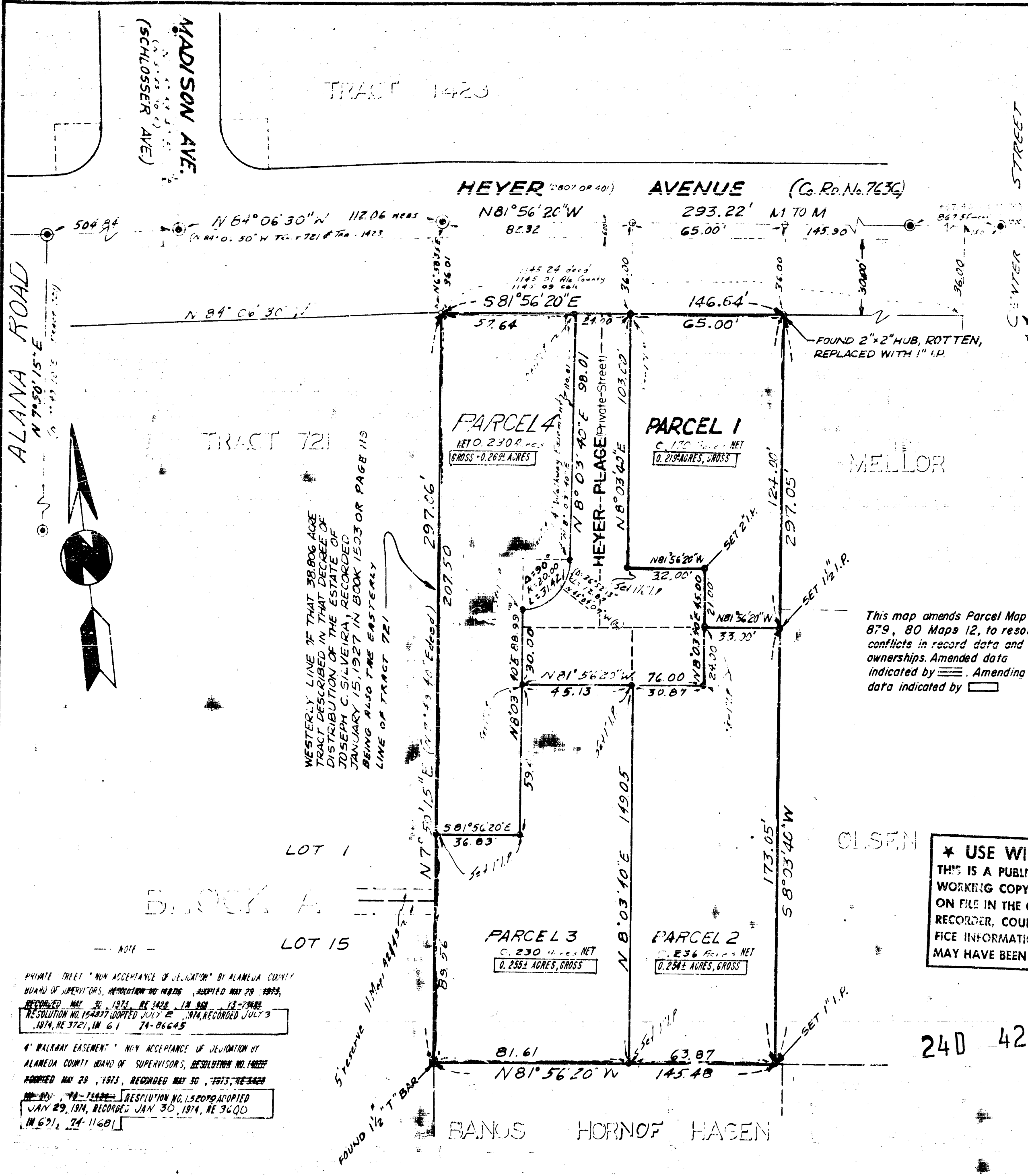
EDEN TOWNSHIP, ALAMEDA COUNTY, CALIFORNIA,

APRIL 1974
~~JUNE 1974~~
SCALE 1" = 30'

SHEET 1 OF 1 SHEETS

HAROLD B. DAVIS, L.S.
HAYWARD, CALIFORNIA

Amend Map Bk 84 Pg 22 FILED 7-29-74 84/22



PRIVATE TREET "NON ACCEPTANCE OF DELEGATION" BY ALANEDA CRISTINA
BOARD OF SUPERVISORS, ~~RECEIVED MAY 28 1973~~, ACCEPTED MAY 28 1973,
RECORDED MAY 30 1973, RE 1428, IN 969, 13-73483
RE SOLUTION NO 154877 DATED JULY 2, 1974, RECORDED JULY 3
1974, RE 3721, IN 61, 84-86645

4. "WALKWAY EASEMENT." N.Y. ACCEPTANCE OF DEED/ATION BY
ALAMEDA COUNTY BOARD OF SUPERVISORS, RESOLUTION NO. 10022
ADOPTED MAY 29, 1973, RECORDED MAY 30, 1973, RE 3428
NO. 92, 70-11440 RESOLUTION NO. 15200 ADOPTED
JAN 29, 1974, RECORDED JAN 30, 1974, RE 3600
IN 691, 74-11681