

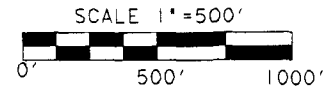
51/19

SURVEYOR'S STATEMENT

THIS MAP CORRECTLY REPRESENTS A SURVEY MADE BY ME OR UNDER MY DIRECTION IN CONFORMANCE WITH THE REQUIREMENTS OF THE LAND SURVEYORS' ACT AT THE REQUEST OF NEIL AND SANDY McDUGGALD IN MAY OF 2002



Douglas J. Johnson
DOUGLAS "JOHN" JOHNSON, P.L.S. 6360 EXPIRES 12/31/06



NORTH

RECORD OF SURVEY

COUNTY OF MADERA STATE OF CALIFORNIA

CONSISTING OF TWO SHEETS SHEET ONE OF TWO

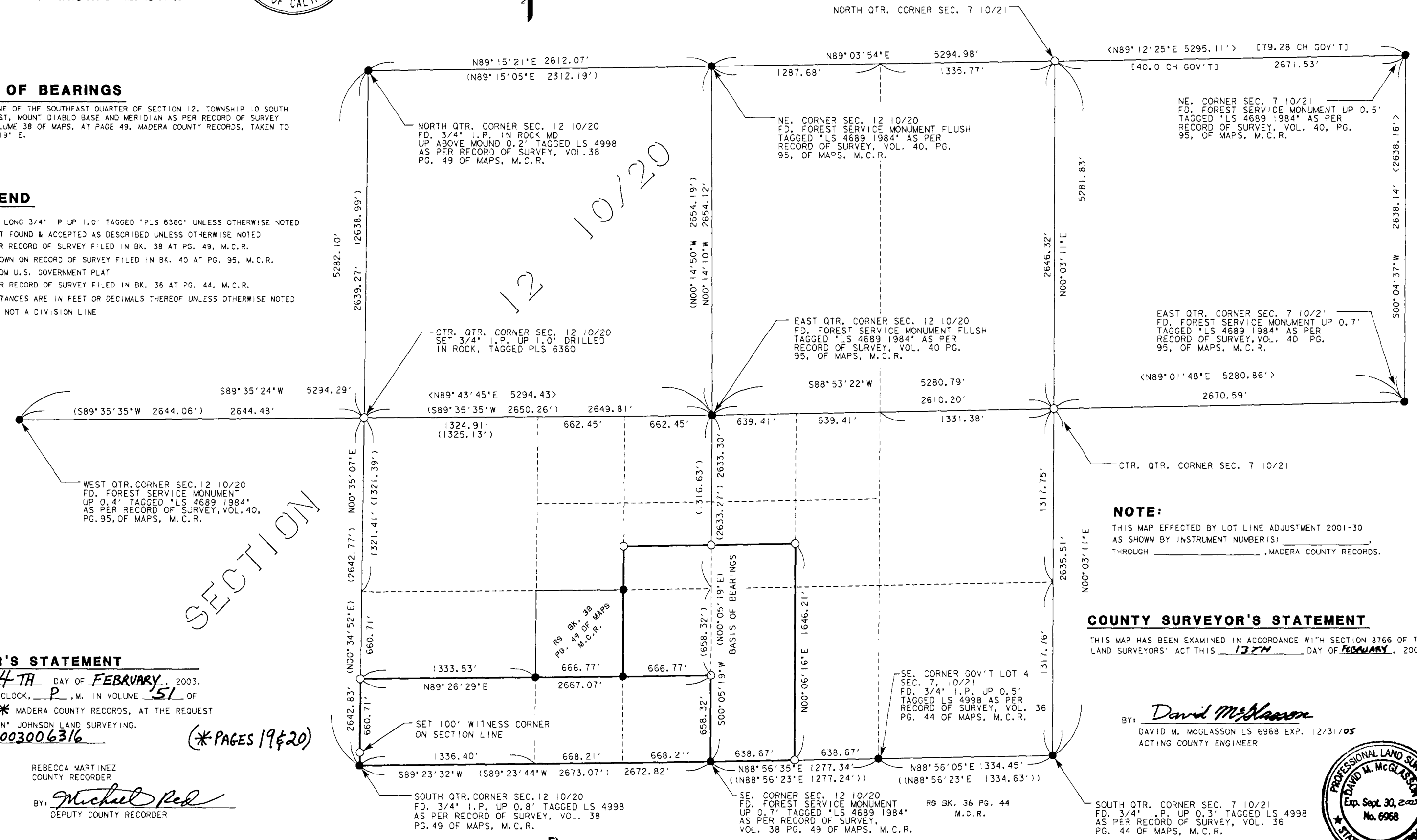
A PORTION OF THE NORTHWEST QUARTER OF SECTION 12, TOWNSHIP 10 SOUTH, RANGE 20 EAST, AND A PORTION OF SECTION 7, TOWNSHIP 10 SOUTH, RANGE 21 EAST, MOUNT DIABLO BASE AND MERIDIAN

BASIS OF BEARINGS

THE EAST LINE OF THE SOUTHEAST QUARTER OF SECTION 12, TOWNSHIP 10 SOUTH, RANGE 20 EAST, MOUNT DIABLO BASE AND MERIDIAN AS PER RECORD OF SURVEY FILED IN VOLUME 38 OF MAPS, AT PAGE 49, MADERA COUNTY RECORDS, TAKEN TO BE N 00°05'19" E.

LEGEND

- SET 30' LONG 3/4" I.P. UP 1.0' TAGGED "PLS 6360" UNLESS OTHERWISE NOTED
- MONUMENT FOUND & ACCEPTED AS DESCRIBED UNLESS OTHERWISE NOTED
- () DATA PER RECORD OF SURVEY FILED IN BK. 38 AT PG. 49, M.C.R.
- < > DATA SHOWN ON RECORD OF SURVEY FILED IN BK. 40 AT PG. 95, M.C.R.
- [] DATA FROM U.S. GOVERNMENT PLAT
- (()) DATA PER RECORD OF SURVEY FILED IN BK. 36 AT PG. 44, M.C.R.
- ALL DISTANCES ARE IN FEET OR DECIMALS THEREOF UNLESS OTHERWISE NOTED
- N.D.L., NOT A DIVISION LINE



NOTE:
THIS MAP EFFECTED BY LOT LINE ADJUSTMENT 2001-30 AS SHOWN BY INSTRUMENT NUMBER(S) _____ THROUGH _____, MADERA COUNTY RECORDS.

COUNTY SURVEYOR'S STATEMENT

THIS MAP HAS BEEN EXAMINED IN ACCORDANCE WITH SECTION 8766 OF THE LAND SURVEYORS' ACT THIS 13TH DAY OF FEBRUARY, 2003.

BY: *David McGlasson*
DAVID M. MCGLOSSON LS 6968 EXP. 12/31/05
ACTING COUNTY ENGINEER



RECORDER'S STATEMENT

FILED THIS 14TH DAY OF FEBRUARY, 2003,
AT 3:16 O'CLOCK, P, M. IN VOLUME 51 OF
MAPS AT PAGE 5 * MADERA COUNTY RECORDS, AT THE REQUEST
OF DOUGLAS "JOHN" JOHNSON LAND SURVEYING.
DOCUMENT NO. 2003006316
FEE \$10.00

REBECCA MARTINEZ
COUNTY RECORDER
BY: *Michael Red*
DEPUTY COUNTY RECORDER

51/19

RECORD OF SURVEY

COUNTY OF MADERA STATE OF CALIFORNIA
CONSISTING OF TWO SHEETS SHEET TWO OF TWO SHEETS

LEGEND

- SET 30" LONG 3/4" I.P. UP 1.0' TAGGED 'PLS 6360' UNLESS OTHERWISE NOTED
 - MONUMENT FOUND & ACCEPTED AS DESCRIBED UNLESS OTHERWISE NOTED
 - () DATA PER RECORD OF SURVEY FILED IN BK. 38 AT PG. 49, M.C.R.
 - < > DATA SHOWN ON RECORD OF SURVEY FILED IN BK. 40 AT PG. 95, M.C.R.
 - [] DATA FROM U.S. GOVERNMENT PLAT
 - (()) DATA PER RECORD OF SURVEY FILED IN BK. 36 AT PG. 44, M.C.R.
- ALL DISTANCES ARE IN FEET OR DECIMALS THEREOF UNLESS OTHERWISE NOTED

N.D.L. NOT A DIVISION LINE

CORNER DESCRIPTIONS

CORNER DESCRIPTIONS

- A FD. 3/4" I.P. UP 0.5' TAGGED LS 4998
N34°00'34"W 0.08' FROM CALCULATED POSITION
- B FD. 3/4" I.P. UP 0.5' TAGGED LS 4998
N75°39'49"W 0.13' FROM CALCULATED POSITION
- C FD. 3/4" I.P. UP 0.5' TAGGED LS 4998
S66°20'18"E 0.18' FROM CALCULATED POSITION

