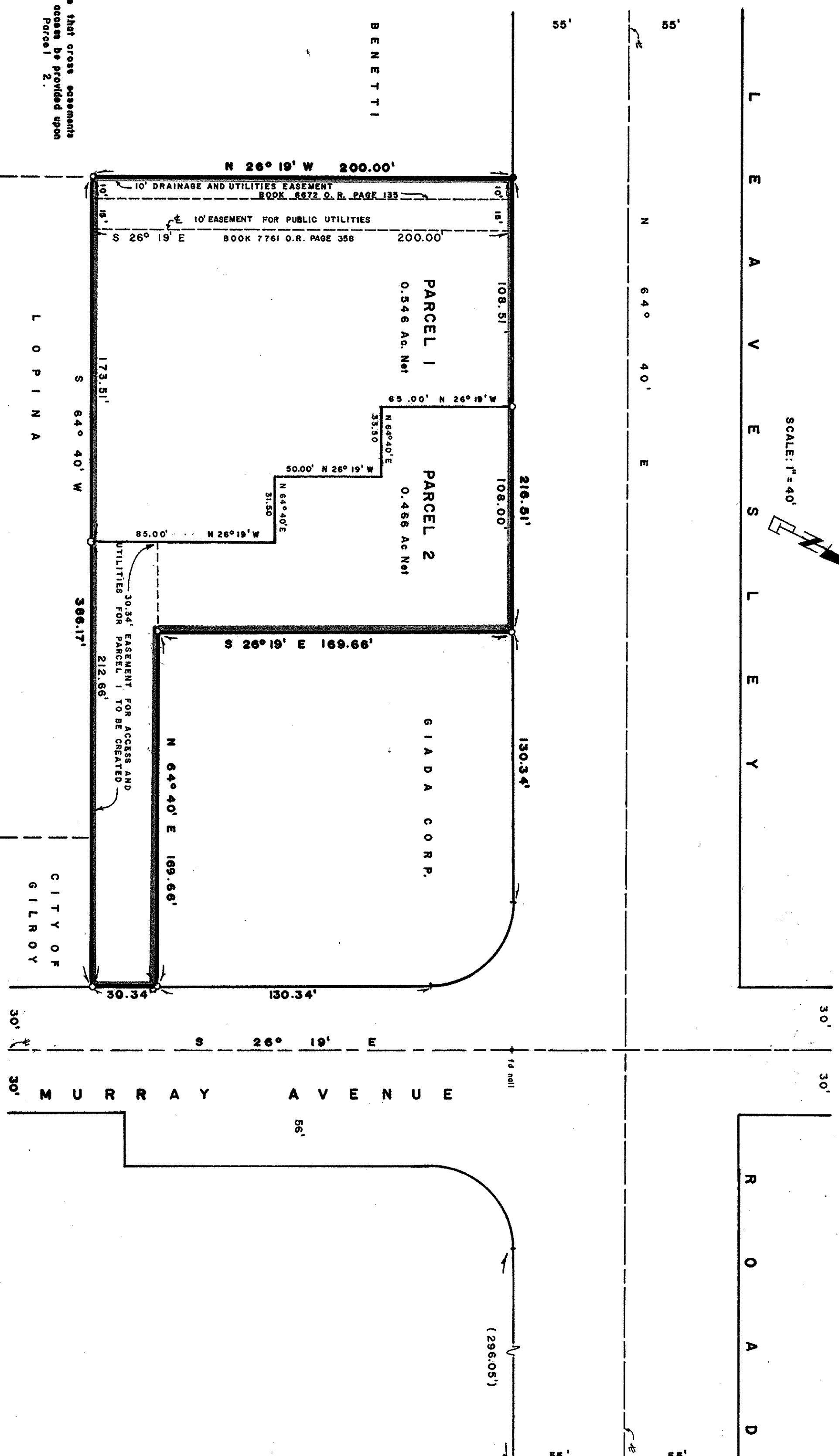


L E G E N D  
○ Set 1" I.P. with R.C.E. Tag NO. 18576  
● Found 1" I.P.  
○ Found Standard City Monument.  
( ) Record Date.

SCALE: 1"=40'

L E A V E S L E Y

R O A D



NOTE: The City of Gilroy will require that cross easements for parking, utilities and access be provided upon development of Parcel 1 or Parcel 2.

### SURVEYOR'S CERTIFICATE

This map was prepared by me or under my direction and was compiled from record data and is based upon a field survey in conformance with the requirements of the Subdivision Map Act at the request of C.H. Development Co. on Nov. 1, 1972. I hereby certify that it conforms to the approved tentative map and the conditions of approval thereof that all provisions of applicable state law and local ordinances have been complied with.

*James H. Davis*  
R. C. E. NO. 18576

### CITY ENGINEER'S CERTIFICATE

This map has been examined this 7th day of Feb., 1973, for conformance with the requirements of Section 11575 of the Subdivision Map Act.

*William K. Henry*  
WILLIAM K. HENRY  
City Engineer

### File No. 4449535 RECORDER'S CERTIFICATE

Filed this 9th day of Feb., 1973, at 4:28 P.M. in Book 316 of Maps at page 28 of the request of J. R. GARCIA

#500 GEORGE A. MANN  
County Recorder

*Bonnie Cline*  
By Deputy

### BASIS OF BEARING

The south line of Levesley Road shown as N 64° 40' E in Book 158 of Maps in Pages 25 and 26 Santa Clara County Records and as found monumented.

### PARCEL MAP

PORTION OF THE LAS ANIMAS RANCHO  
SUB LOT 6B (CASE NO. 5536 OF THE  
SUPERIOR COURT)

IN THE  
CITY OF GILROY  
COUNTY OF SANTA CLARA, CALIF.  
November, 1972  
J. R. GARCIA  
CIVIL ENGINEER  
17550 Monterey Street  
MORGAN HILL, CAL.

316/28

316/28

28