

CORNER RECORD

Agency Index

BK 128 PG 40

Document Number

CR 13237

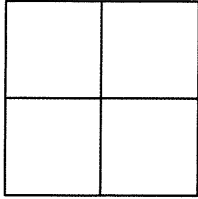
City of EDEN TOWNSHIP

County of ALAMEDA, California

Brief Legal Description MONUMENT LOCATED WITHIN ROBEY DR IN FRONT OF 2125 174TH ST

CORNER TYPE

COORDINATES (Optional)



Government Corner ☐ Control ☒
Meander ☐ Property ☐
Rancho ☐ Other ☐

Date of Survey 8/6/19

N. _____ E. _____

Elevation _____

Units Metric ☐ U.S. Survey Foot ☐

Horizontal Datum _____

Zone _____ Epoch Date _____

Vertical Datum _____

☐ Complies with Public Resources Code §§8801-8819☐ Complies with Public Resources Code §§8890-8902PLS Act Ref: ☐ 8765 (d) ☒ 8771 ☐ 8773 ☐ Other:

Corner/Monument: ☒ Left as found ☐ Established ☐ Rebuilt ☒ Pre-Construction
☐ Found and tagged ☐ Reestablished ☒ Referenced ☐ Post-Construction

Narrative of corner identified and monument as found, set, reset, replaced, or removed:

☐ See sheet #2 for description (s):

FOUND 1-1/2" BRASS DISC WITH PUNCH STAMPED "EBMUD RESET 2018" NEAR SURFACE.
MONUMENT WAS NOT IN A MONUMENT WELL.

FOUND AND SET POINTS AS SHOWN ON PAGE 2.

THIS POINT WAS REFERENCED PRIOR TO A CONSTRUCTION PROJECT IN THE VICINITY.

THE TIES SHOWN HEREON ARE FOR THE PURPOSE OF PERPETUATING FOUND MONUMENTATION.

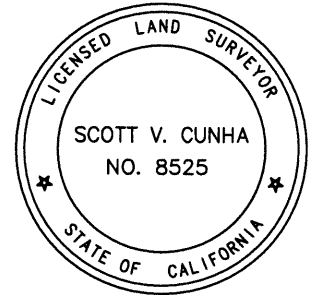
NO CLAIM IS MADE AS TO THE RELATIONSHIP OF THE POINTS OR LINES SHOWN HEREON TO TRUE BOUNDARY LOCATION.

SURVEYOR'S STATEMENT

This Corner Record was prepared by me or under my direction in conformance with

the Professional Land Surveyors' Act on AUGUST 7, 2019.

Signed Scott V. Cunha P.L.S. or R.C.E. No. LS 8525
SCOTT V. CUNHA



COUNTY SURVEYOR'S STATEMENT

This Corner Record was received AUG 07 2019,

and examined and filed NOV 18 2019,

Signed D. Ian Wilson P.L.S. or R.C.E. No. 7010

Title ALAMEDA COUNTY SURVEYOR

County Surveyor's Comment



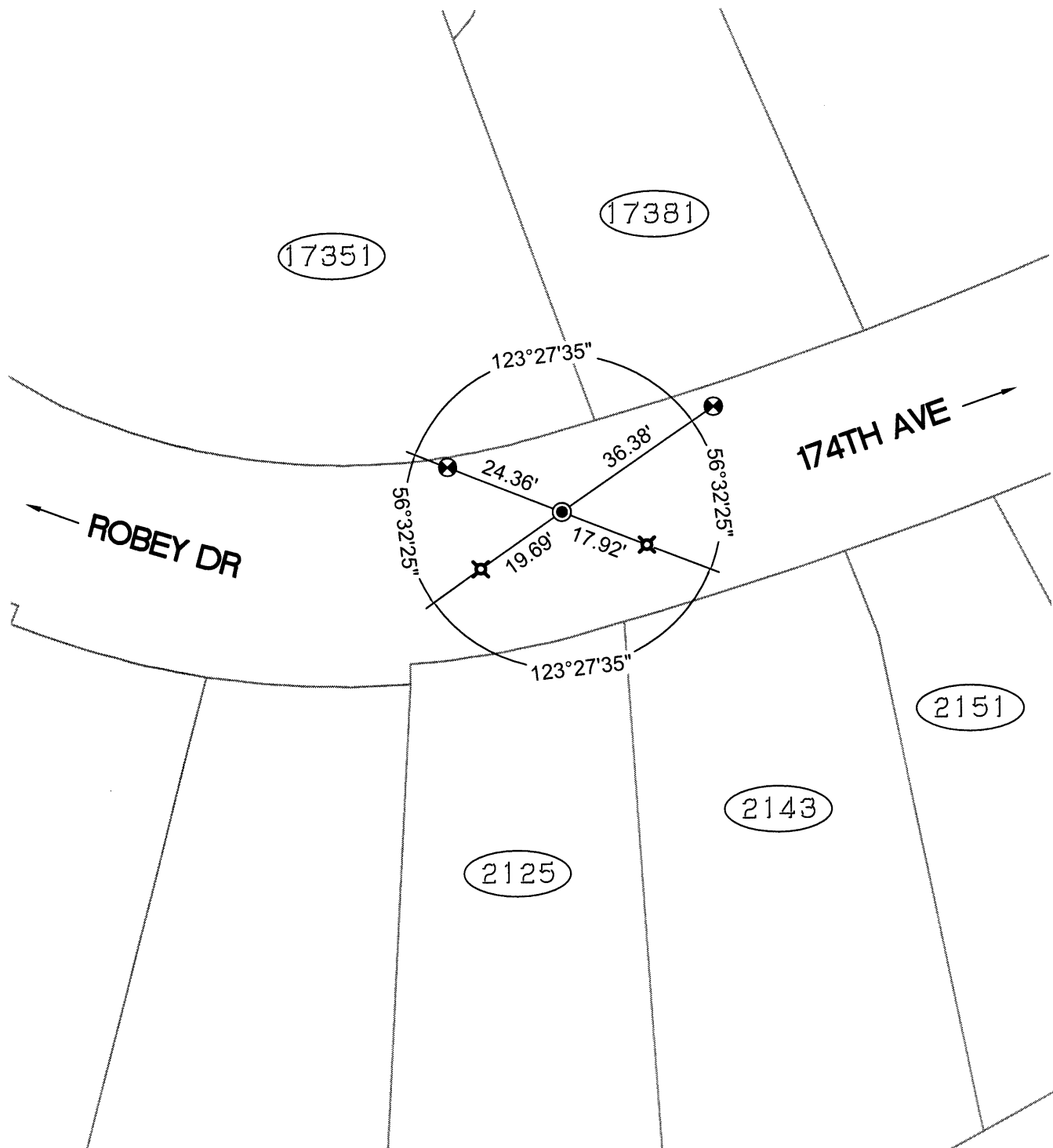
SPEC-2377-Pre

SCALE: 1"=30'

LEGEND

- FOUND 1-1/2" BRASS DISC WITH PUNCH STAMPED "EBMUD RESET 2018"
- ⊗ SET CUT CROSS IN CONCRETE OF VALLEY GUTTER
- ✕ SET MAG AND WASHER STAMPED "CEI RP"
- SET REBAR & CAP STAMPED "CEI RP"

(19592) REFERENCE STREET ADDRESS



219105-Robey-CR-10