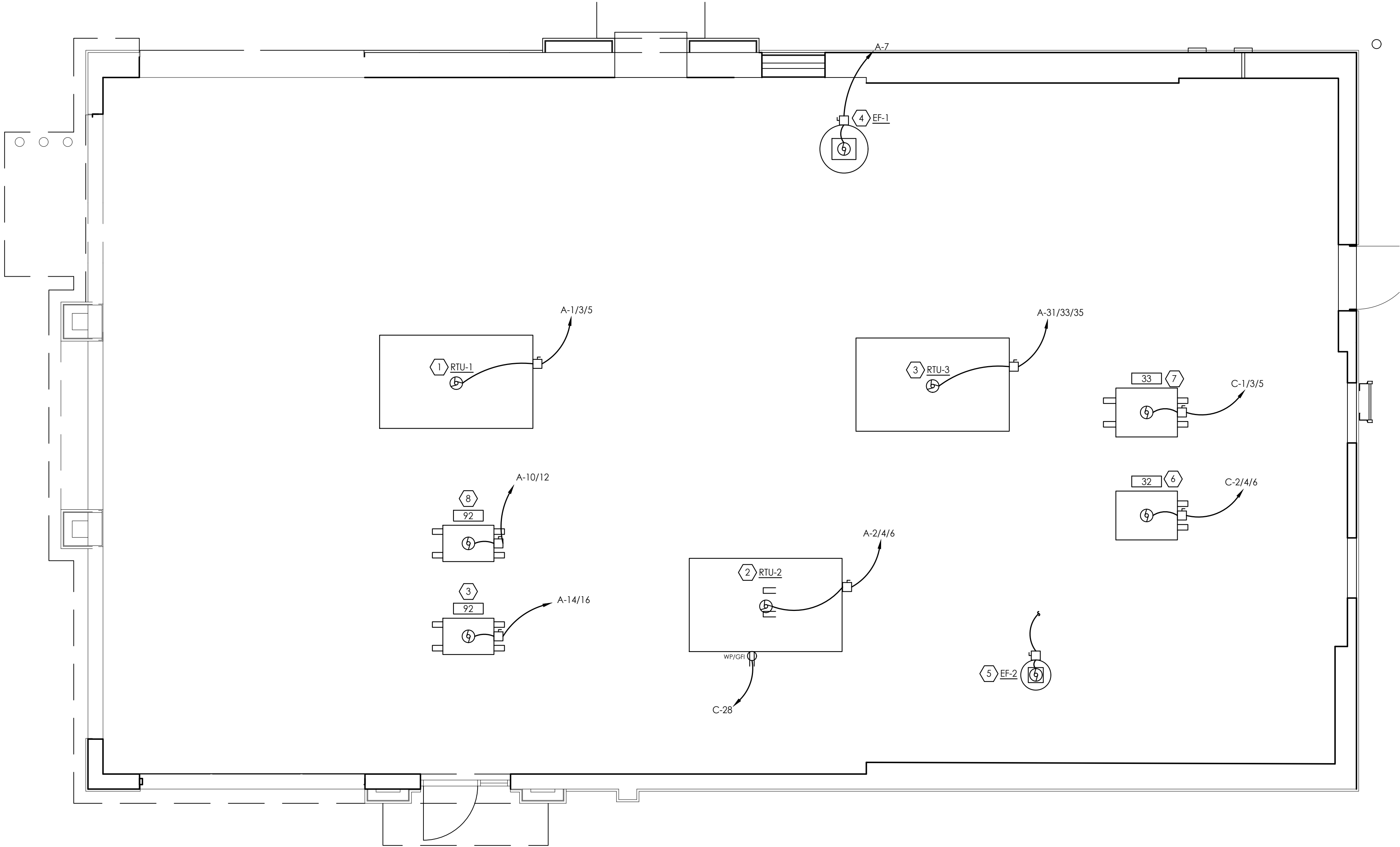


ROOF PLAN - ELECTRICAL

1/4" = 1'-0"



CODED NOTES:

1. RTU-1: 45 MCA, 208V-3PH, RUN (3) #4, #10G IN 1" CONDUIT FROM 60A/3P BREAKER THRU FACTORY SUPPLIED DISCONNECT TO UNIT. MAKE FINAL CONNECTION.
2. RTU-2: 45 MCA, 208V-3PH, RUN (3) #4, #10G IN 1" CONDUIT FROM 60A/3P BREAKER THRU FACTORY SUPPLIED DISCONNECT TO UNIT. MAKE FINAL CONNECTION.
3. DRIVE-THRU BEVERAGE STATION ICE MAKER CONDENSING UNIT: 2.4 KW, 208V-1PH. PROVIDE (2) #12, #12G IN 3/4" CONDUIT FROM 20A/2P BREAKER THROUGH 30A/2P NON-FUSED NEMA 3R DISC SWITCH TO UNIT. MAKE FINAL CONNECTION.
4. EF-1: 1/2 HP, 120V, PULL (2) #12, #12G IN 3/4" CONDUIT THROUGH HOOD MASTER CONTROL PANEL FOR CONTROL. SEE SHEET E2.1 FOR COORDINATION.
5. EF-2: FRACTIONAL HP, 120V, ROUTE CIRCUIT TO KITCHEN LIGHTING CIRCUIT TO OPERATE WHENEVER RESTAURANT IS IN USE.
6. 32 - WALK-IN FREEZER CONDENSING UNIT: 3.6 KW, 208V-3PH. PROVIDE (3) #12, #12G IN 3/4" CONDUIT FROM 20A/3P BREAKER THROUGH UNIT MOUNTED 30A/3P FUSED NEMA 3R DISC. SWITCH TO UNIT. MAKE FINAL CONNECTION.
7. 33 - WALK IN COOLER CONDENSING UNIT: 5.4 KW, 208V-3PH. PROVIDE (3) #12, #12G IN 3/4" CONDUIT FROM 20A/3P BREAKER THROUGH UNIT MOUNTED 30A/3P NON-FUSED NEMA 3R DISC. SWITCH TO UNIT. MAKE FINAL CONNECTION.
8. BEVERAGE STATION ICE MAKER CONDENSING UNIT: 2.4 KW, 208V-1PH. PROVIDE (2) #12, #12G IN 3/4" CONDUIT FROM 20A/2P BREAKER THROUGH 30A/2P NON-FUSED NEMA 3R DISC SWITCH TO UNIT. MAKE FINAL CONNECTION.



PROPRIETARY INFORMATION NOTICE:  
THESE PROTOTYPICAL DOCUMENTS MAY REQUIRE REVISIONS TO CONFORM TO LOCAL, STATE, AND FEDERAL CODES, ORDINANCES OR OTHER CONDITIONS. THE DESIGN CONCEPTS EMBODIED IN THESE DOCUMENTS ARE SPECIFICALLY FOR THIS PROJECT. INFORMATION CONTAINED HEREIN REMAINS THE SOLE PROPERTY OF ARBY'S RESTAURANT GROUP, IS CONFIDENTIAL AND PROPRIETARY AND IS NOT TO BE COPIED, REPRODUCED, DISCLOSED OR OTHERWISE TRANSFERRED TO OTHER PARTIES IN ANY FORM WHATSOEVER WITHOUT THE EXPRESS WRITTEN CONSENT OF ARBY'S RESTAURANT GROUP.



ARBY'S RESTAURANT GROUP  
INSPIRE DUAL REGULAR 40 - STANDARD  
1632 AR-25 BYPASS  
HEBER SPRINGS, AR 72543  
FOR  
RB AMERICAN GROUP, LLC  
6200 OAK TREE BLVD., SUITE 250, INDEPENDENCE, OHIO 44131

PROJECT NUMBER:

ISSUE	DATE
PRELIMINARY	
PERMIT	
BID	
REVISION	

ROOF PLAN  
ELECTRICAL

SHEET:

E3.1