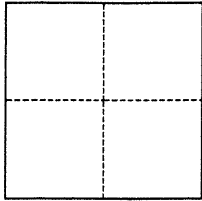


CORNER RECORD

Agency Index

BK 123 PG 90Document Number CR 12439City of PLEASANTON County of ALAMEDA, CaliforniaBrief Legal Description RP MONUMENT @ INTX CALIFORNIA AVENUE AND NEVADA ST. (122 M 30)**CORNER TYPE****COORDINATES (Optional)**

- ☐ Government Corner ☒ Control
☐ Meander ☐ Property
☐ Rancho ☐ Other

Date of Survey SEPTEMBER 21, 2018

N. _____ E. _____
Elevation _____
Units ☐ Metric ☐ U.S. Survey Foot
Horizontal Datum _____
Zone _____ Epoch Date _____
Vertical Datum _____
☐ Complies with Public Resources Code §§8801-8819
☐ Complies with Public Resources Code §§8890-8902

PLS Act Ref.: ☐ 8765(d) ☒ 8771 ☐ 8773 ☐ Other:
Corner/
Monument: ☒ Left as found ☐ Established ☐ Rebuilt ☒ Pre-Construction
☐ Found and tagged ☐ Reestablished ☒ Referenced ☐ Post-Construction

Narrative of corner identified and monument as found, set, reset, replaced, or removed:

☒ See sheet #2 for description(s):

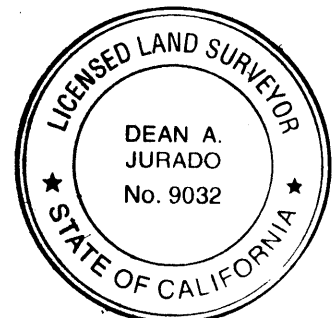
THE STREET MONUMONUMENT AT THE INTERSECTION OF CALIFORNIA AVENUE AND NEVADA STREET HAS BEEN REFERENCED WITH CUT CROSSES ON SURROUNDING CURBS, FOR PURPOSES OF PERPETUATING THE FOUND POSITION. NO CLAIM IS MADE AS TO THE RELATIONSHIP OF THE POINTS OR LINES HEREON TO TRUE BOUNDARY LOCATIONS.

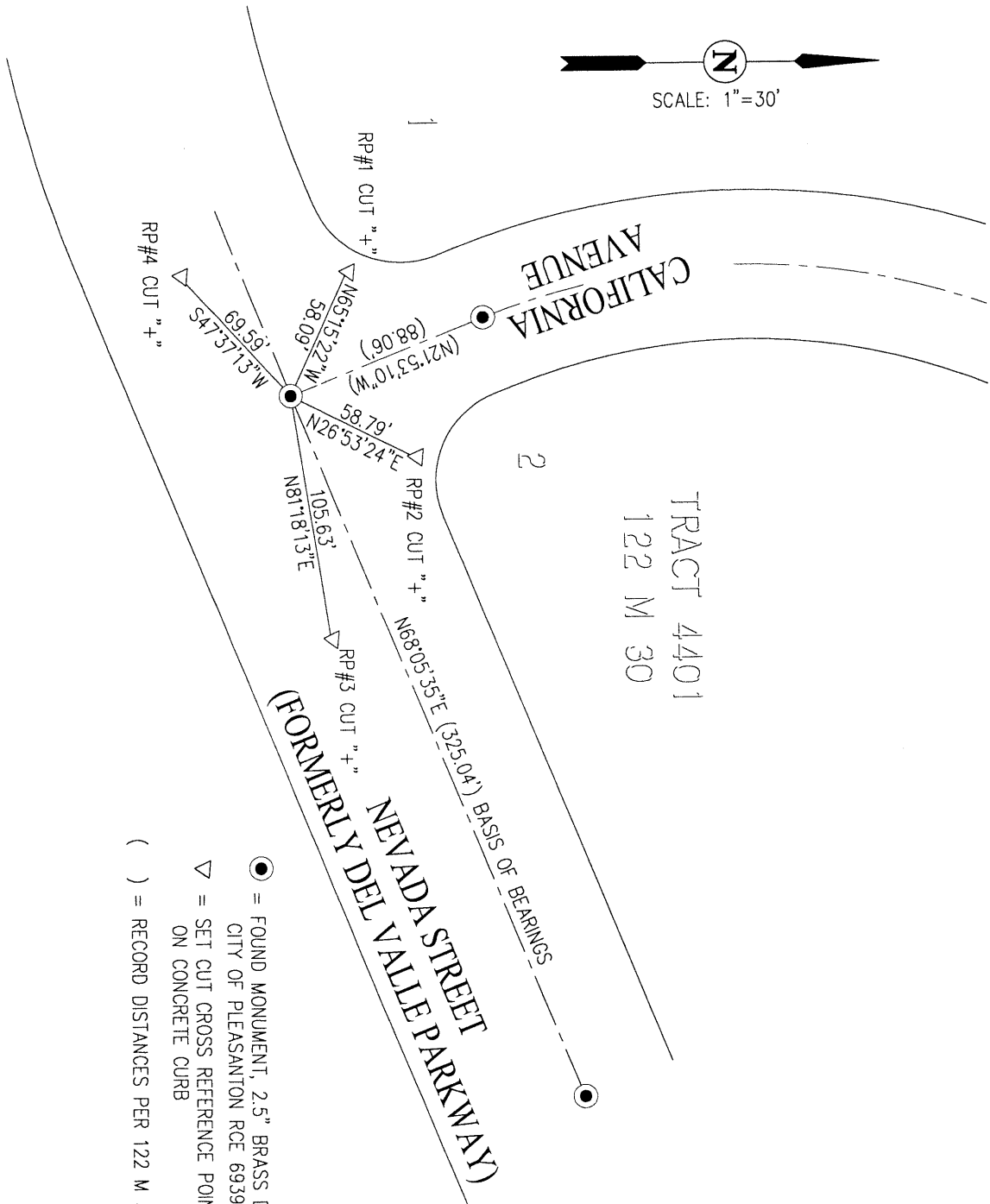
SURVEYOR'S STATEMENT

This Corner Record was prepared by me or under my direction in conformance with

the Professional Land Surveyors' Act on NOVEMBER 1, 2018Signed [Signature] P.L.S. or R.C.E. No. 7960**COUNTY SURVEYOR'S STATEMENT**This Corner Record was received August 9, 2019and examined and filed September 20, 2019Signed [Signature] P.L.S. or R.C.E. No. 9032Title Interim County Surveyor

County Surveyor's Comment





● = FOUND MONUMENT, 2.5" BRASS DISC
CITY OF PLEASANTON RCE 6939

▽ = SET CUT CROSS REFERENCE POINT
ON CONCRETE CURB

() = RECORD DISTANCES PER 122 M 30

ALL BEARINGS & DISTANCES ARE FIELD
MEASURED UNLESS OTHERWISE INDICATED