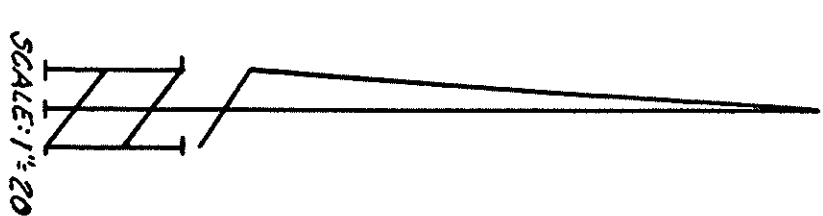
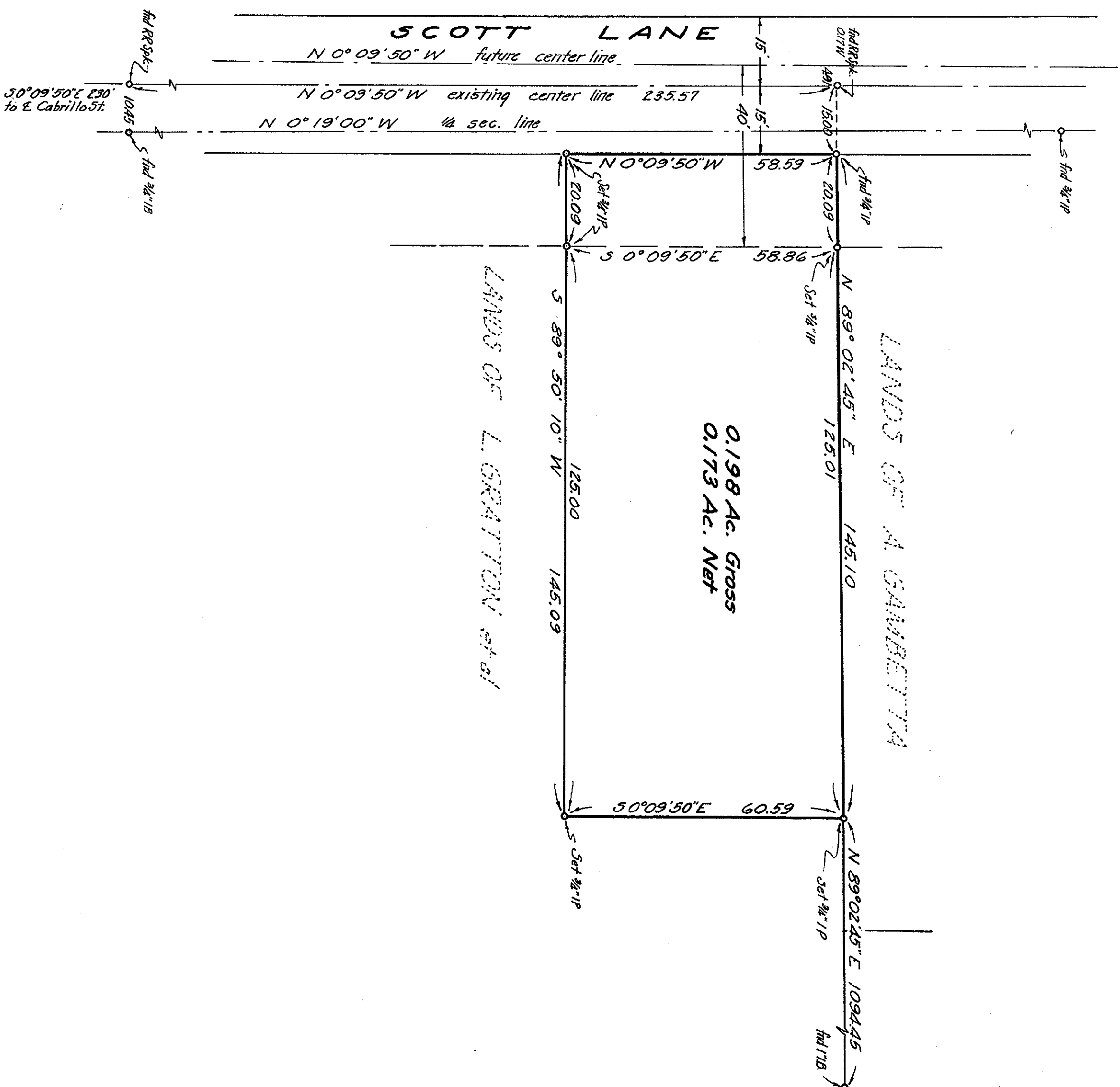


Note: Scott Lane is shown as 50 ft wide on R15 Bk 61 of Maps Pg 22. County Engineer Plan No. 3649, dated May 1951, shows Scott Lane as 40 ft wide and County Records show 30 ft wide. (.353 D 278 and 82 Maps 3 Santa Clara County Records)



BASIS OF BEARINGS:

The bearing of the 1/4 section line (N 0° 19' 00" W) as shown on the Record of Survey of Lands of L. O. Mathison recorded in Bk 61 of Maps, Page 23, Santa Clara County Records was used as basis of bearings for this survey.

SURVEYOR'S CERTIFICATE

This map correctly represents a survey made by me or under my direction in conformance with the requirements of Chapter 15 of Division 3 of the Business and Professions Code at the request of H. Simmons

in July, 1959.

John F. Glatton
Reg. Civil Eng. No. 7602

CO. SURVEYOR'S CERTIFICATE

This map has been examined for conformance with the requirements of Chapter 15 of Division 3 of the Business and Professions Code this 21st day of July, 1959.

By Deputy Joseph H. Sperry
County Surveyor

RECORDER'S CERTIFICATE

Filed for record this 22nd day of July, 1959.

at 1:36 p.m. in Book 109 of Maps.

at page 33 at the request of L. O. Mathison
by Deputy Sybil G. Tully
County Recorder

1666617

RECORD OF SURVEY

LANDS OF R. J. GAMBETTA et ux
PTN SE 1/4 SEC. 34 T6S R1W MDBM
IN THE CITY OF SANTA CLARA CAL.

M I S S I O N E N G I N E E R S
1365 LAFAYETTE ST. SANTA CLARA, CAL.
JOHN L. WATERS CIVIL ENGINEER
SCALE: 1"=20'
JOB NO. 907101 JULY 1959
DWG NO. M-1642