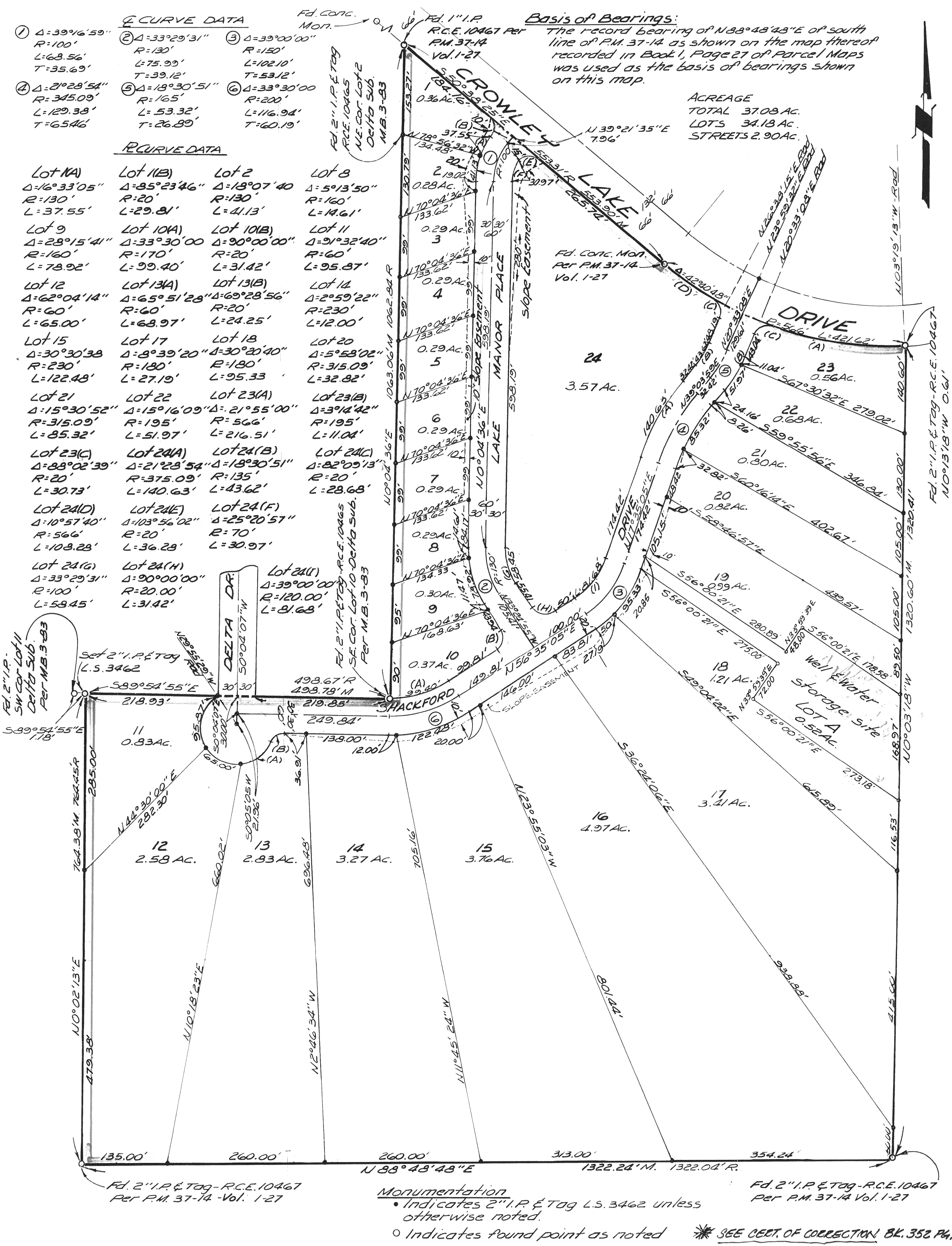


# FINAL MAP TRACT 37-19

IN THE  
COUNTY OF MONO, STATE OF CALIFORNIA.

BEING A SUBDIVISION OF PARCEL 1 OF PARCEL MAP No. 37-14 AS PER  
MAP RECORDED IN BOOK 1, PAGE 27 OF PARCEL MAPS IN THE OFFICE OF  
THE COUNTY RECORDER OF SAID COUNTY AND BEING SITUATED  
IN THE W<sup>1</sup>/<sub>2</sub> OF THE NE<sup>1</sup>/<sub>4</sub> OF SECTION 35, T.4S, R.29E., M.D.M.



Just map Bk 9 Page 18-A