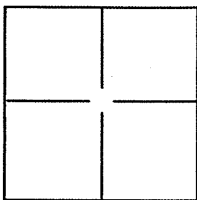


CORNER RECORD

BK 76 PG 66
Document Number CR 7976
City of CASTRO VALLEY AREA County of ALAMEDA, California

Brief Legal Description ALAMEDA COUNTY MONUMENT NO. JK38L6-ONE OF FOUR ALAMEDA COUNTY MONUMENTS IN BLANDING COURT, NORTH OF BUTTE STREET.



CORNER TYPE

COORDINATES(Optional)

Government Corner ☐ Control ☐
Meander ☐ Property ☐
Rancho ☐ Other ☒

N. _____
E. _____
Zone _____ NAD27 ☐ NAD83 ☐
NAD83 Epoch _____
Elev. _____
Vert. Datum: NGVD29 ☐ NAVD88 ☐
Meas. Units: Metric ☐ Imperial ☒

Date of Survey DECEMBER 11, 2015.

Corner - Left as found ☒ Found and tagged ☐ Established ☐ Reestablished ☐ Rebuilt ☐

Identification and type of corner found: Evidence used to identify or procedure used to establish or reestablish the corner:

FOUND MONUMENT NO. JK38L6 AND NEAR BY MONUMENT NO. HJ27K5.
ESTABLISHED PRE-CONSTRUCTION SURVEY MONUMENT TIES AS SHOWN ON
SHEET 2 OF 2.

A description of the physical condition of the monument as found and as set or reset

I SET FOUR SCRIBED "X's" IN TOP OF CURBS FOR REFERENCE POINTS AS
SHOWN ON SHEET 2 OF 2. TIE TO FOUND MONUMENT HJ27K5 GIVEN IN
CASE IT SURVIVES CONSTRUCTION WORK. NOTE THAT BEARINGS ARE
APPROXIMATE AND ARE TO BE USED FOR ANGLE CALCULATIONS ONLY.

SURVEYOR'S STATEMENT

This Corner Record was prepared by me or under my direction in conformance with
the Land Surveyor's Act on DECEMBER 13, 2015.

Signed [Signature] P.L.S. or R.C.E. No.: LS 5837



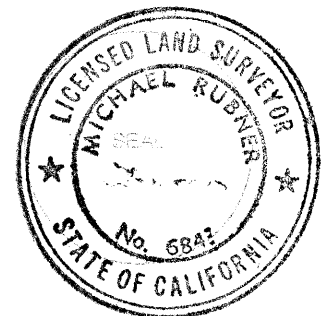
COUNTY SURVEYOR'S STATEMENT

This Corner Record was received 19 JANUARY, 2016 and examined
and filed 16 FEBRUARY, 2016.

Signed [Signature] P.L.S. or R.C.E. No.: 6843

Title COUNTY SURVEYOR

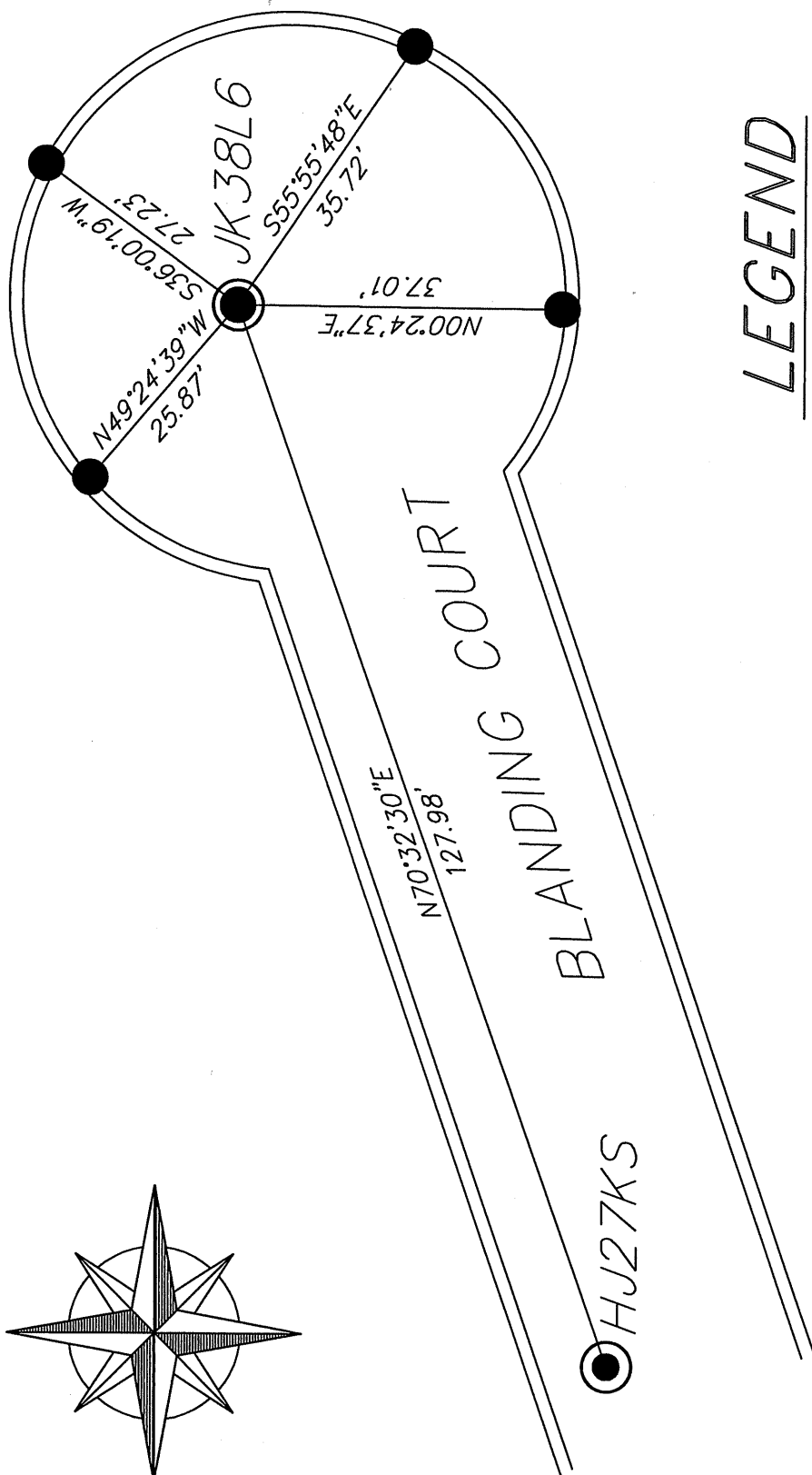
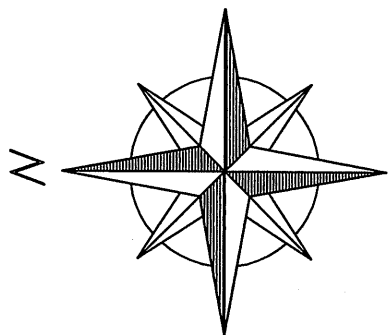
County Surveyor's Comment _____



SPEC 2279

R23432

POINT "JK38L6"



LEGEND

FOUND FINISH NAIL IN MONWELL.
NAIL SET IN CONCRETE 6" DOWN
AND FLUSH WITH CONCRETE.



SET SCRIBED "X" IN TOP OF CURB
UNLESS OTHERWISE NOTED.



JK38L6 ALAMEDA COUNTY MONUMENT
NUMBER.

NOT TO SCALE