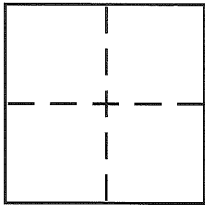


CORNER RECORDDocument Number CR 2148City of OAKLAND County of ALAMEDA, CaliforniaBrief Legal Description LOT 2238, "PIEDMONT PINES" (14 M 40)**CORNER TYPE**

Government Corner ☐ Control ☐
 Meander ☐ Property ☒
 Rancho ☐ Other ☐
 Date of Survey 30 MARCH '04

COORDINATES (Optional)

N. _____
 E. _____
 Zone _____ NAD27 ☐ NAD83 ☐
 NAD83 Epoch _____
 Elev. _____
 Vert. Datum: NGVD29 ☐ NAVD88 ☐
 Meas. Units: Metric ☐ Imperial ☐

Corner - Left as found ☐ Found and tagged ☐ Established ☒ Reestablished ☐ Rebuilt ☐

Identification and type of corner found: Evidence used to identify or procedure used to establish or reestablish the corner:

FOUND SUBDIVISION PIN MONUMENT PER 14 M 40

A description of the physical condition of the monument as found and as set or reset:

SET 5/8" REBAR & PLASTIC CAP LS 5252

SURVEYOR'S STATEMENT

This Corner Record was prepared by me or under my direction in conformance with

the Land Surveyor's Act on 19 APRIL 2004

Signed Jeffrey D. Black P.L.S or R.C.E. No. 5252

COUNTY SURVEYOR'S STATEMENT

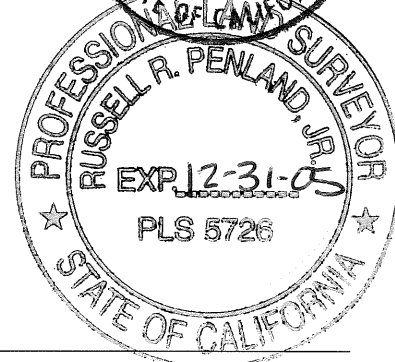
This Corner Record was received 4-26-04

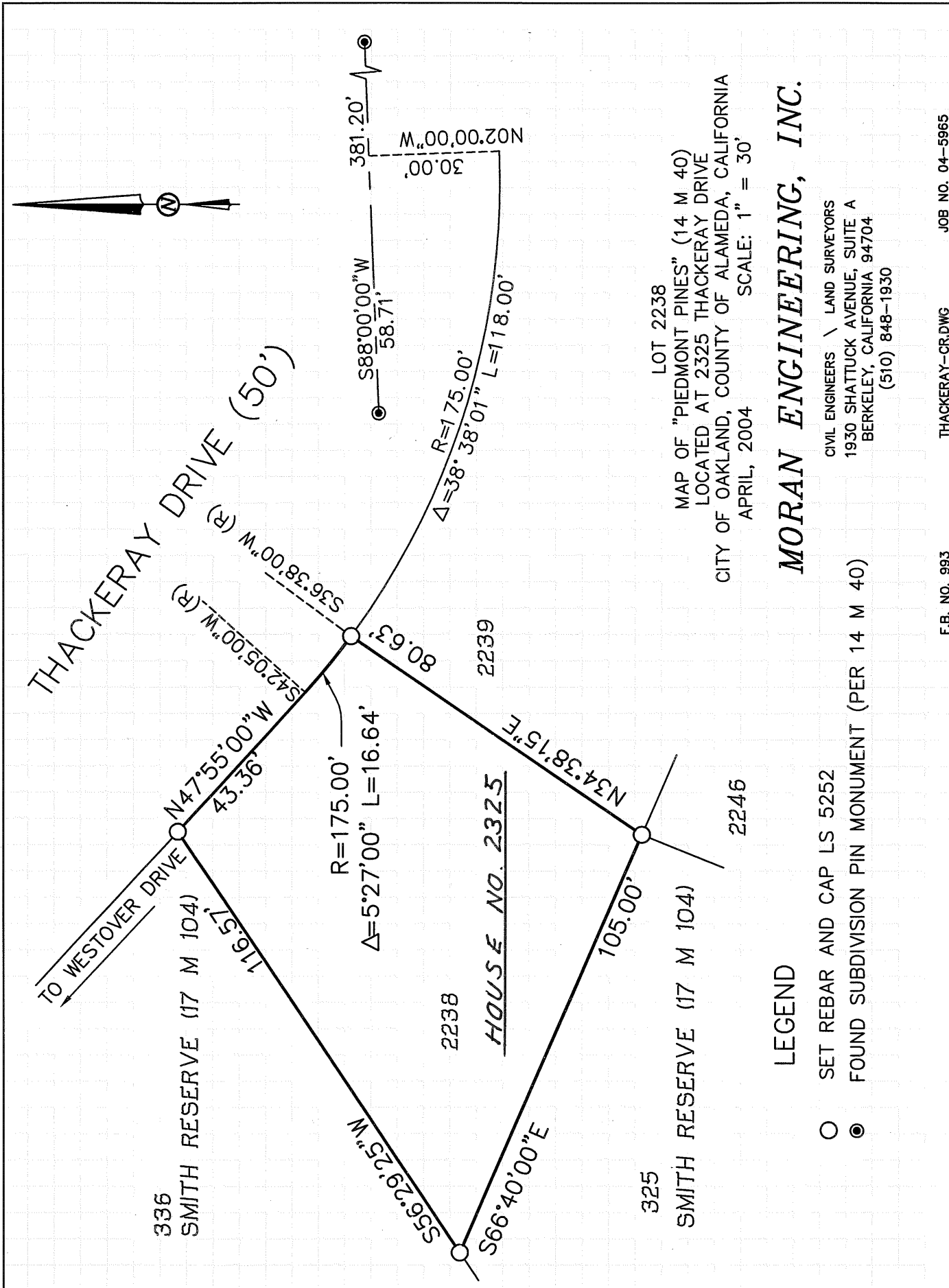
and examined and filed 6-21-04

Signed Russell R. Penland, Jr. P.L.S or R.C.E. No. 5726

Title COUNTY SURVEYOR

County Surveyor's Comment _____





LOT 2238
 MAP OF "PIEDMONT PINES" (14 M 40)
 LOCATED AT 2325 THACKERAY DRIVE
 CITY OF OAKLAND, COUNTY OF ALAMEDA, CALIFORNIA
 APRIL, 2004
 SCALE: 1" = 30'

MORAN ENGINEERING, INC.

CIVIL ENGINEERS \ LAND SURVEYORS
 1930 SHATTUCK AVENUE, SUITE A
 BERKELEY, CALIFORNIA 94704
 (510) 848-1930

LEGEND

- SET REBAR AND CAP LS 5252
- FOUND SUBDIVISION PIN MONUMENT (PER 14 M 40)