

PART 1 - GENERAL

1.01 COORDINATION OF TRADES: SCHEDULE AND COORDINATE WORK WITH THAT OF OTHER DIVISIONS AND SECTIONS.

1.02 GUARANTEE IN WRITING THE ELECTRICAL INSTALLATION, AND ALL WORK UNDER THIS SECTION, FOR A PERIOD OF ONE YEAR FROM THE DATE OF FINAL ACCEPTANCE BY THE OWNER AGAINST ALL EVIDENCE OF IMPERFECT WORKMANSHIP OR FAILURE OR MALFUNCTION OF MATERIALS.

PART 2 - PRODUCTS

2.01 MATERIALS AND EQUIPMENT

A. MATERIAL FURNISHED UNDER THIS CONTRACT, UNLESS OTHERWISE NOTED, SHALL BE NEW, FREE FROM DEFECTS AND SHALL CONFORM WITH THE STANDARDS OF UL

B. VOLTAGE, AMPERE, AND OTHER RATINGS OF EQUIPMENT SHALL BE SUITABLE FOR USE INTENDED. DISCONNECT SWITCHES SHALL BE PROPERLY HORSEPOWER RATED AND SUITABLE FOR VOLTAGE AND AMPERE RATING OF LOAD.

C. THE DRAWINGS GENERALLY INDICATES THE RACEWAY SIZE, THE NUMBER, SIZE, AND INSULATION TYPE OF CONDUCTORS TO BE PROVIDED AND INSTALLED. WHERE THESE ITEMS DO NOT MEET MINIMUM APPLICABLE CODES, FOR EQUIPMENT BEING SERVED, COMPLY AS REQUIRED AT NO ADDITIONAL COST.

2.02 RACEWAYS

A. GALVANIZED RIGID CONDUIT (GRC); INCLUDING ELBOWS AND COUPLINGS.

B. INTERMEDIATE METAL CONDUIT (IMC); INCLUDING ELBOWS AND COUPLINGS.

C. ELECTRIC METALLIC TUBING (EMT) WITH FITTINGS OF PRESSED STEEL OR MALLEABLE IRON, COMPRESSION TYPE (IN WET AREAS ONLY) WITH INSULATED THROATS.

D. RIGID NON-METALLIC CONDUIT (PVC) U.L. LABELED SCHEDULE 40 P.V.C.

2.03 DEVICE AND JUNCTION BOXES: INCLUDE PLASTER RINGS, COVERS, AND KO SEALS AS REQUIRED.

2.04 WIRE AND CABLE: UNLESS OTHERWISE NOTED, WIRE AND CABLE SHALL BE SOFT DRAWN, ANNEALED COPPER, WIRE SIZES NO. 8 AND LARGER AND CONDUCTORS SERVING MOTORS AND SUBJECT TO VIBRATIONS SHALL BE STRANDED CABLE. INSULATION TO BE THW/THHN, JACKETED 90C INSULATED WIRE. PROVIDE WIRE COLOR IDENTIFICATION: NEUTRAL WIRE - WHITE, LIVE WIRE - BLACK, RED, BLUE ON 120/208 VOLT SYSTEM; NEUTRAL WIRE - GREY, LIVE WIRE - BROWN, ORANGE YELLOW ON 277/480 VOLT SYSTEM; GROUND - GREEN.

2.05 ADDED PANELS TO BE PANELBOARDS - LOAD CENTERS ARE NOT ACCEPTABLE UNLESS SPECIFICALLY APPROVED.

2.06 SERVICE ENTRANCE AND DISTRIBUTION GEAR BY G.E., SQUARE "D" OR CUTLER HAMMER OR SIEMENS ONLY. INTERIOR PANELBOARDS SHALL BE RECESSED WITH FLANGED/REMOVABLE SCREW-ON COVER. SURFACE MOUNTED PANELBOARDS OR HINGED/FLUSH COVERS ARE NOT ALLOWED.

2.07 SWITCHBOARDS: COPPER BUSSING WITH FULL CAPACITY NEUTRAL.

2.08 120/208 VOLT AND 277/480 VOLT PANELBOARDS: 3 PHASE, 4 WIRE, COPPER BUS, COMPOSED OF AN ASSEMBLY OF BOLT-IN-PLACE MOLDED CASE CIRCUIT BREAKERS WITH THERMAL AND MAGNETIC TRIP AND TRIP FREE POSITION SEPARATE FROM EITHER ON OR OFF POSITIONS.

2.09 SAFETY SWITCHES: FUSED, HEAVY DUTY, HORSEPOWER RATED.

2.10 STARTERS, CONTACTORS AND CONTROL DEVICES: PROVIDE AS SHOWN AND AS REQUIRED BY CODE. FURNISH COMPLETE WITH PILOT LIGHTS, AUXILIARY CONTACTS, PUSH BUTTONS, HAND-OFF ON SWITCHES, CONTROL DEVICES, AND OVERLOAD RELAYS. THERMAL OVERLOADS TO BE SIZED PER MANUFACTURERS RECOMMENDATIONS. AMBIENTLY COMPENSATE ALL HEATERS EXPOSED TO HIGH TEMPERATURE OR INSTALLED OUTSIDE AS NEEDED.

2.11 NAMEPLATES: PROVIDE BLACK LAMICOID NAMEPLATES WITH 3/16" HIGH WHITE ENGRAVED LETTERS ON PANELS, SWITCHBOARDS, MAINS AND SUBMANS, DISTRIBUTION EQUIPMENT, REMOTE SAFETY SWITCHES, CIRCUIT BREAKERS, TIME SWITCHES, CONTACTORS, AND STARTERS.

2.12 WIRING DEVICES

A. HUBBELL OR COMPARABLE LEVITON OR BRYANT; WHITE AND GREY IN COLOR - AS NOTED ON DRAWINGS OR PER ARCHITECT. 15 AMP DEVICES ALLOWED ONLY WHEN SPECIFICALLY DENOTED ON ELECTRICAL CONSTRUCTION DRAWINGS.

B. TOGGLE SWITCHES: SINGLE POLE - HUBBELL 1221- 20A, 120/277V, THREE WAY - HUBBELL 1223- 20A, 120/277V, FOUR WAY - HUBBELL 1224- 20A, 120/277V.

C. RECEPTACLES: DUPLEX GROUNDING TYPE, SPECIFICATION GRADE, 125 VOLT, 20 AMPERES, SINGLE PHASE, HUBBELL NO. 5262 OR COMPARABLE.

D. GROUND FAULT INTERRUPTER TYPE RECEPTACLE: DUPLEX GROUNDING TYPE, SPECIFICATION GRADE, 125 VOLT, 20 AMPERES, SINGLE PHASE, 5 mA GROUND TRIP, FEED THROUGH CONSTRUCTION.

2.13 DEVICE PLATES: LEXAN (STA-KLEEN), SMOOTH FINISH IN STAINLESS STEEL - AS NOTED ON PLANS. MULTI-GANG OUTLET PLATES SHALL BE USED FOR MULTI-GANG BOXES.

2.14 LIGHTING FIXTURES

A. ALL INTERIOR / BUILDING MOUNTED LIGHTING PROVIDED BY PX AND INSTALLED BY E.C.

B. ALL EXTERIOR SITE LIGHTING IS PROVIDED AND INSTALLED BY E.C.

PART 3 - EXECUTION

3.01 GENERAL INSTALLATION

A. THE ENTIRE ELECTRICAL INSTALLATION SHALL BE MADE IN A NEAT, APPROVED, FINISHED, AND SAFE MANNER.

B. INSPECT AND MAKE TIGHT ALL CONNECTIONS FOR ALL EQUIPMENT, INCLUDING FACTORY CONNECTIONS. TORQUE ALL CONNECTIONS PER MANUFACTURERS RECOMMENDATIONS.

C. LIGHTING FIXTURES INSTALLED AND USED FOR LIGHTING DURING CONSTRUCTION SHALL BE RELAMPED WITH NEW LAMPS JUST PRIOR TO FINAL ACCEPTANCE OF THE PROJECT.

D. INSTALL SEISMIC RESTRAINT DEVICES FOR ALL CEILING MOUNTED EQUIPMENT, I.E. LAY-IN FIXTURES, PROVIDE GRID CLIPS AND #12 SLACK WIRES FROM FIXTURE CORNERS TO STRUCTURE.

3.02 RACEWAYS

A. INSTALL COMPLETE RACEWAY SYSTEMS FOR ALL ELECTRICAL CONDUCTORS INCLUDING TELEPHONE, SIGNAL, CONTROL, AND OTHER SYSTEMS.

B. UNLESS OTHERWISE NOTED, INSTALL ALL RACEWAYS CONCEALED. WHERE IT IS NOT FEASIBLE TO CONCEAL RACEWAYS, INSTALL AS DIRECTED BY ARCHITECT.

C. INSTALL EXPOSED RACEWAYS TO RUN PARALLEL OR AT RIGHT ANGLES TO STRUCTURAL BUILDING LINES WITH NEAT BENDS AND NEATLY OFFSET INTO TERMINATIONS.

D. IN EMPTY RACEWAY PROVIDE AND INSTALL A NO. 14 NYLON DRAG LINE.

E. INSTALL RACEWAYS WITH APPROVED HEAVY DUTY SUPPORTS, STRAPS, HANGERS, CONNECTORS, AND COUPLINGS AS REQUIRED TO MAINTAIN AN APPROVED INSTALLATION.

F. MINIMUM CONDUIT SIZE TO BE 3/4" U.N.O.

3.03 GALVANIZED RIGID CONDUIT (GRC): ALL RACEWAYS SHALL BE GRC EXCEPT AS NOTED. CONDUIT, ELBOWS, AND STANDARD COUPLINGS SHALL BE HOT DIPPED GALVANIZED RIGID STEEL. IF PARTITIONS OR WALLS ARE SOLID CONCRETE OR ARE GROUDED SOLID WITH CONCRETE OR MORTAR, RIGID STEEL CONDUIT SHALL BE USED.

3.04 INTERMEDIATE METAL CONDUIT (IMC): IMC RACEWAY AND APPROVED FITTINGS WHERE PERMITTED BY APPLICABLE CODES AND REGULATIONS MAY BE USED IN LIEU OF RIGID STEEL CONDUIT, WHERE INSTALLED ABOVE FINISH GRADE AND ABOVE CONCRETE SLABS ON GRADE.

3.05 ELECTRIC METALLIC TUBING (EMT): EMT MAY BE USED WHERE CONCEALED IN AREAS ABOVE CEILINGS, FURRED SPACES, PARTITIONS OR WALLS. ALSO MAY BE EXPOSED, WHEN NOT IN HAZARDOUS AREAS, AREAS SUBJECT TO PHYSICAL DAMAGE, OR WHEN DIRECTLY EXPOSED TO RAIN OR WASH-DOWN.

3.06 FLEXIBLE METAL CONDUIT (FLEX): USE FLEXIBLE CONDUITS FOR CONNECTIONS TO MOTORS, WHERE SUBJECT TO MOVEMENT OR VIBRATION, AND LIQUID TIGHT WHERE EXPOSED TO MOISTURE OR OIL.

3.07 RIGID NONMETALLIC CONDUIT PVC SCHEDULE 40 MAY BE INSTALLED FOR DIRECT BURIAL RACEWAYS WHERE INSTALLED WITH MINIMUM COVERAGE PER NEC TABLE 300-5. ALL UNDERGROUND BENDS SHALL BE GRC.

3.08 OUTLET, PULL AND JUNCTION BOXES

A. UNLESS OTHERWISE SHOWN OR AS DIRECTED PRIOR TO INSTALLATION, OUTLET BOXES SHALL GENERALLY BE PLACED AT THE FOLLOWING HEIGHTS, CENTER OF BOX TO FINISHED FLOOR LEVEL.

B. WALL SWITCHES: 44".

C. CONVENIENCE RECEPTACLES: 18" (OR 4" ABOVE COUNTERS) AND/OR AS NOTED. (SIMILAR TYPE OUTLETS SHALL BE MOUNTED AT SAME HEIGHT IN EACH AREA), GROUNDING PIN AT BOTTOM.

D. OTHER OUTLET TYPES: REFER TO ELECTRICAL SYMBOL LIST ON THIS SHEET.

3.09 CONDUCTORS (COPPER ONLY)

A. USE SPECIFIED COLOR SCHEDULE FOR ALL WIRING. WHERE LARGE CONDUCTORS ARE NOT AVAILABLE IN COLORS, IDENTIFY WITH PERMANENT COLORED TAPE AT ALL TERMINATIONS, JUNCTION BOXES, ETC. COLOR CODING PER NEC.

B. MAKE TAPS, JOINTS, SPLICES, AND OTHER CONNECTIONS WITH FIXTURE CONNECTORS.

C. DO NOT INSTALL WIRING OR PULL WIRES, IN RACEWAYS UNTIL RACEWAY SYSTEM IS COMPLETE, CLEAN, DRY, AND FREE OF ALL FOREIGN MATERIALS. LUBRICATE AS REQUIRED.

D. MINIMUM CONDUCTOR SIZE TO BE #12 CU. THWN.

3.10 LIGHTING FIXTURES

A. LEAVE FIXTURES AND LAMPS CLEAN OF ALL DIRT, DUST, GREASE SPOTS AND DEBRIS. ALL GLASS, PLASTIC AND OTHER COMPONENTS SHALL BE UNSCRATCHED AND UNSPOILED.

B. FIT AND ADJUST ALL FIXTURES, WHERE STRUCTURAL CONDITIONS, PARTITIONS, FURNITURE, SHELVING, AND AIR CONDITIONING DIFFUSERS INTERFERE WITH THE LIGHTING FIXTURES AT LOCATIONS SHOWN, NOTIFY ARCHITECT IN WRITING AND RELOCATE AT NO ADDITIONAL COST AS DIRECTED.

C. FIXTURES WITH FINISH TRIM OR LENS FRAMES SHALL BE GASKETED AND BAFFLED TO PREVENT LIGHT LEAKS. INSTALL SO THAT NO LIGHT LEAKS EXIST.

D. FIXTURES MOUNTED DIRECTLY ON COMBUSTIBLE LOW-DENSITY CEILINGS SHALL MEET UL APPROVAL FOR THIS CONDITION AND BE PLAINLY MARKED AS SUCH.

3.11 GROUNDING

A. GROUNDING FOR DISTRIBUTION EQUIPMENT, EQUIPMENT AND MATERIALS WITH ELECTRICAL CONNECTIONS, ELECTRIC MOTOR FRAMES, ELECTRIC RACEWAY AND RELATED EQUIPMENT, SHALL BE EFFECTIVELY AND PERMANENTLY GROUNDED IN ACCORDANCE WITH PERTINENT SECTIONS OF ARTICLE 250 OF NEC. RESISTANCE TO GROUND SHALL NOT EXCEED 10 OHMS.

B. ALL RACEWAYS SHALL HAVE AN APPROVED SIZED, INSULATED, STRANDED COPPER GROUNDING CONDUCTOR.

C. WHERE RACEWAYS CONNECT TO A CONCENTRIC K.O. PROVIDE GROUNDING LOCKNUT OR BUSHING AND BOND WIRE EXTENDED AND BONDED TO ENCLOSURE, SIZE AS PER NEC.

3.12 DITCHING, EXCAVATION AND BACKFILLING: PERFORM ALL DITCHING, EXCAVATION AND BACKFILLING REQUIRED FOR THE ELECTRICAL WORK. PROVIDE AND MAINTAIN ALL SHEATHING, BRACING AND PROPER GUARDS FOR PREVENTION OF ACCIDENTS.

3.13 UTILITY COMPANY SERVICE CONTRACTOR TO BE RESPONSIBLE FOR COORDINATING AND PROVIDING REQUIRED WORK FOR SUPPLYING ELECTRICAL POWER AND COMMUNICATIONS UTILITIES TO THE PROJECT.

3.14 FINAL INSPECTION: TEST SYSTEM FOR SHORTS AND OPENS. FAULTY WIRING SHALL BE REMOVED AND REPLACED. AFTER SYSTEM IS CONNECTED COMPLETELY, TEST FOR INSULATION RESISTANCE. RESISTANCE LOWER THAN OUTLINED IN THE NEC, MANUFACTURER'S DATA, ETC., SHALL BE REMOVED AND REPLACED. ANY DEVICE, APPARATUS OR FIXTURE UNDER THIS CONTRACT SHOWING SUBSTANDARD READINGS SHALL BE REMOVED AND REPLACED AS DIRECTED BY THE ARCHITECT.

3.15 LABEL ALL RECEPTACLES WITH 3/16" HIGH BLACK LETTERING ON CLEAR TAPE. IF THE RECEPTACLE IS BLACK OR BROWN, PROVIDE WHITE LETTERING ON CLEAR TAPE. LABEL TO BE NEATLY CENTERED IN THE TOP SPACE OF THE COVERPLATE, AND SHALL INDICATE THE SERVING PANEL AND CIRCUIT ORIGIN.

ELECTRICAL SPECIFICATIONS

3

NOT TO SCALE

E-000

GENERAL NOTES

2

NOT TO SCALE

E-000

NOTICE

THESE DRAWINGS ARE SUBJECT TO APPROVAL BY THE BUILDING DEPARTMENT, FIRE MARSHAL, UTILITY COMPANY AND OTHER AUTHORITIES HAVING JURISDICTION (AHJ). BY THE ACT OF SUBMITTING A BID PROPOSAL FOR WORK, THE CONTRACTOR INDICATES THAT HE OR SHE HAS REVIEWED THE PLANS THOROUGHLY AND ACCEPTED FULL RESPONSIBILITY OF PLAN CORRECTIONS AND ASSOCIATED CONSTRUCTION COSTS REQUIRED BY AHJ.

1. THE ELECTRICAL DRAWINGS, SPECIFICATIONS AND GENERAL NOTES DESCRIBE THE SCOPE OF WORK AND THE DOCUMENTS SHALL BE USED FOR THE PURPOSE OF BIDDING, BUILDING DEPARTMENT REVIEW, AND TO SECURE THE NECESSARY CONSTRUCTION PERMIT ONLY.
2. BRANCH CIRCUITING AND WIRE COUNT MAY NOT BE INDICATED ON THESE PLANS. CONTRACTOR IS RESPONSIBLE TO COMPLETE THE BRANCH CIRCUIT WIRING IN ACCORDANCE WITH PLAN NOTES AND AS PERMITTED BY AUTHORITY. CONTRACTOR SHALL SUBMIT AS-BUILT DRAWINGS AS A PART OF RECORD DRAWINGS SUBMITTAL TO ARCHITECT AND AUTHORITY HAVING JURISDICTION (AHJ).
3. ELECTRICAL INSTALLATION SHALL BE IN ACCORDANCE WITH BOTH THE NATIONAL ELECTRICAL CODE (NEC) AND ALL LOCAL ORDINANCES / AMENDMENTS. WHERE CONFLICTS ARISE, THE MOST STRINGENT REQUIREMENT SHALL TAKE PRECEDENCE.
4. ALL ELECTRICAL EQUIPMENT SHOWN IS NEW, CONTRACTOR FURNISHED AND INSTALLED, UNLESS OTHERWISE NOTED. IF CONTRACTOR PROPOSES TO SUBSTITUTE SPECIFIC EQUIPMENT SPECIFIED, A REQUEST FOR CONSIDERATION SHALL BE SUBMITTED TO THE OWNER AND ENGINEER PRIOR TO THE BID IN WRITING. ALL SUBSTITUTIONS MUST BE REVIEWED BY THE ENGINEER. SUCH REVIEW SHALL NOT RELIEVE THE CONTRACTOR FROM COMPLYING WITH THE REQUIREMENTS OF THE DRAWINGS AND SPECIFICATIONS. NO SUBSTITUTIONS SHALL BE IMPLEMENTED WITHOUT THE APPROVAL OF THE ENGINEER OR RECORD. THE CONTRACTOR SHALL BE RESPONSIBLE, AT HIS OWN EXPENSE, FOR ANY CHANGE RESULTING FROM HIS PROPOSED SUBSTITUTIONS WHICH AFFECT OTHER PARTS OF HIS OWN WORK, OR SUBSTITUTIONS WHICH AFFECT THE WORK OF OTHER CONTRACTORS.
5. THE ELECTRICAL DRAWINGS, CONDUIT RUNS, WIRING AND ELECTRICAL INFORMATION ARE DIAGRAMMATIC ONLY. DO NOT SCALE THE ELECTRICAL DRAWINGS TO DETERMINE THE EXACT LOCATION OF EQUIPMENT OR OUTLETS. COORDINATE WITH ARCHITECT/OWNER PRIOR TO ROUGH-IN.
6. REFER TO THE ARCHITECTURAL REFLECTED CEILING PLAN FOR EXACT LOCATIONS OF ALL LIGHTING FIXTURES, CEILING MOUNTED OUTLETS AND EQUIPMENT.
7. ALL DEVICE MOUNTING HEIGHTS AND EXACT LOCATIONS SHALL BE COORDINATED WITH ARCHITECTURAL DRAWINGS AND ELEVATIONS PRIOR TO ROUGH-IN.
8. IT SHALL BE THE CONTRACTOR'S RESPONSIBILITY TO VERIFY TYPES OF CEILING SYSTEM. FIXTURES LOCATED IN DAMP OR WET LOCATIONS SHALL BE LISTED AND LABELED FOR USE IN SUCH LOCATIONS. CONTRACTOR SHALL PROVIDE ALL REQUIRED TRIMS AND HARDWARE TO ACCOMMODATE CEILING TYPE.
9. ALL RECESSED LIGHTING FIXTURES, PANELBOARDS, SWITCHES, ETC., MOUNTED IN FIRE RATED STRUCTURES SHALL BE ENCLOSED WITH AN APPROVED ENCLOSURE CARRYING THE SAME FIRE RATING AS THE STRUCTURE. SEAL ALL PENETRATIONS THROUGH FIRE RATED WALLS, CEILINGS, FLOORS, ETC., TO MAINTAIN THE FIRE RATING. FURNISH AND INSTALL FIRE RATED ENCLOSURE FOR ALL EQUIPMENT PENETRATING INTO FIRE RATED ENVELOPS, SPACES ETC.
10. PORTIONS OF THE CEILING SYSTEMS MAY BE INACCESSIBLE, THEREFORE, THE CONTRACTOR SHALL STRATEGICALLY LOCATE ACCESS BOXES, ETC., WHICH SHALL BE READILY ACCESSIBLE. ALL LIGHTING FIXTURE WIRING, BALLASTS, J-BOXES, ETC. SHALL BE ACCESSIBLE FROM FIXTURE OPENING.
11. ALL WIRING AND ELECTRICAL EQUIPMENT SERVING MECHANICAL AND PLUMBING EQUIPMENT SHALL BE IN ACCORDANCE WITH MECHANICAL AND PLUMBING SPECIFICATIONS AND ASSOCIATED DRAWINGS. CONTRACTOR SHALL OBTAIN THE REQUIRED MECHANICAL AND PLUMBING DRAWINGS AND PROVIDE ALL EQUIPMENT, RACEWAYS, WIRING, FITTINGS, ETC., AS INDICATED ON CONSTRUCTION DOCUMENTS.
12. ALL FINAL CONNECTIONS TO OWNER FURNISHED EQUIPMENT SHALL BE MADE BY THE CONTRACTOR, UNLESS OTHERWISE NOTED. VERIFY ELECTRICAL CHARACTERISTICS AND U.L. LISTING PRIOR TO CONNECTION.
13. THE CONTRACTOR SHALL VERIFY THE LOAD AND INPUT VOLTAGE OF ALL PROVIDED EQUIPMENT TO MATCH LOAD INPUT OF ALL EQUIPMENT BEING SUBSTITUTED.
14. ELECTRICAL OUTLETS ON OPPOSITE SIDES OF FIRE RATED WALLS AND PARTITIONS MUST BE SEPARATED BY DISTANCE OF 24 IN. HORIZONTALLY, IN ACCORDANCE WITH I.B.C. SEC. 711.3.2. OPENINGS IN FIRE RATED WALLS MUST BE FIRE STOPPED.
15. PROVIDE AN ADDITIONAL JUNCTION BOX EXTENSION RING (SIZE AS REQUIRED) WHERE THE NUMBER OF CONDUCTORS EXCEEDS THE MAXIMUM ALLOWED FOR A GIVEN JUNCTION POINT OR OUTLET.
16. CONDUCTORS SHALL BE COPPER THHN/THWN 800 VOLT INSULATION UNLESS OTHERWISE NOTED. USE PROPER TEMPERATURE RATING OF CONDUCTORS BASED ON THE AMBIENT AIR TEMPERATURE WHERE CONDUCTORS ARE BEING USED. HIGHER AMPACITY CONDUCTOR AND LARGER RACEWAY SHALL BE PROVIDED TO OFFSET THE AMPACITY CORRECTION FACTORS AS INDICATED IN NEC ARTICLE 310 AND ELSEWHERE IN CODE.
17. ALL LIGHTING FIXTURES PROVIDED BY PANDA EXPRESS INSTALLED BY GC UNLESS NOTED OTHERWISE.
18. DO ALL DRILLING, CUTTING, AND/OR CHANNELING AS REQUIRED FOR ELECTRICAL WORK INDICATED OR HEREIN SPECIFIED. ALL HOLES, CURBS, ETC., IN FLOORS, CEILINGS AND WALLS SHALL BE PATCHED, UNLESS INDICATED OTHERWISE. PAINT ALL EXPOSED ELECTRICAL RACEWAYS, CABINETS, ENCLOSURES AND FITTING TO MATCH IN COLOR TO ADJACENT SURFACES IN FINISHED AREAS. (PROTECT UL LISTINGS LABELS FROM PAINT).
19. EMERGENCY LIGHTING SHALL BE PROVIDED PER U.B.C. PROVIDE ADDITIONAL EMERGENCY ILLUMINATION AS REQUIRED BY AUTHORITIES HAVING JURISDICTIONS.
20. ALL ELECTRICAL EQUIPMENT SHALL BE BRACED OR ANCHORED TO RESIST A HORIZONTAL FORCE ACTING IN ANY DIRECTION USING THE FOLLOWING CRITERIA.
- | | |
|---|--------|
| FIXED EQUIPMENT ON GRADE: | 33% OF |
| OPERATING WEIGHT | |
| FIXED EQUIPMENT ON STRUCTURE: | 50% OF |
| OPERATING WEIGHT | |
| EMERGENCY POWER AND COMMUNICATION & EQUIPMENT ON GRADE: | 50% OF |
| OPERATING WEIGHT | |
| EMERGENCY POWER AND COMMUNICATION ON STRUCTURE: | 75% OF |
| OPERATING WEIGHT | |
- FOR FLEXIBLE MOUNTED EQUIPMENT DOUBLE THE ABOVE VALUES. SIMULTANEOUS VERTICAL FORCE - USE 1/3 HORIZONTAL FORCE. CONDUIT, BUSDUCT, CABLE TRAY, WIREWAYS, ETC. SHALL BE BRACED IN ACCORDANCE WITH "GUIDELINES", PUBLISHED BY SMACNA AND PPI.

ELECTRICAL SYMBOLS LIST

NOTE: ALL DIMENSIONS GIVEN ARE TO DEVICE CENTERLINES. CONTRACTOR TO COORDINATE ALL INSTALLATIONS.

POWER DISTRIBUTION	RECEPTACLES & COMMUNICATIONS OUTLETS
SINGLE-POLE SWITCH, MANUAL MOTOR STARTER	DUPLEX CONVENIENCE OUTLET, 20A, 125V, MTD @ 18" A.F.F. U.N.O.
J-BOX (WITH FLEX CONNECTION TO EQUIPMENT.)	SIMPLEX CONVENIENCE OUTLET, 20A, 125V, MTD @ 18" A.F.F. U.N.O.
DISCONNECT SWITCH, WITH RATING AS SHOWN ON PLANS	ISOLATED GROUND SIMPLEX CONVENIENCE OUTLET (ORANGE), 20A, 125V, MTD @ +18" A.F.F.
COMBINATION DISCONNECT SWITCH / MOTOR STARTER FURNISHED BY ELECTRICAL CONTRACTOR.	DUPLEX CONVENIENCE OUTLET MOUNTED 3" ABOVE COUNTERTOP BACKSPLASH OR APPROXIMATELY 44" A.F.F.
BRANCH CIRCUITRY CONCEALED IN WALL OR CEILING WITH ADDITIONAL #12 INSULATED GND. U.N.O. HACHURES INDICATE NUMBER OF CURRENT CARRYING CONDUCTORS. 'X' INDICATES ADDITIONAL INSULATED, ISOLATED GROUND CONDUCTORS.	GFCI DUPLEX CONVENIENCE OUTLET, 20A, 125V, 5 mA TRIP, MTD @ 18" A.F.F. U.N.O.
BRANCH CIRCUITRY HOMERUN TO PANEL AS NOTED ON PLANS	GFCI DUPLEX CONVENIENCE OUTLET MOUNTED 3" ABOVE COUNTERTOP BACKSPLASH OR APPROXIMATELY 44" A.F.F.
INDICATES EXTERIOR UNDERGROUND WIRE RUNS.	TELEPHONE OUTLET. PROVIDE FLUSH J-BOX @ +18" AFF U.N.O.W/ 1" CONDUIT W/ PULL WIRE TO MANAGER'S STATION. 'W' SUBSCRIPT INDICATES WALL PHONE AT 54" AFF.
LIGHTING & LIGHTING CONTROLS	DATA OUTLET. PROVIDE FLUSH J-BOX @ +18" A.F.F. U.N.O.W/ 1" CONDUIT WITH PULL WIRE TO MANAGER'S STATION.
LIGHTING FIXTURE. SUBSCRIPT LETTER DENOTES FIXTURE TYPE AS DESCRIBED IN LIGHT FIXTURE SCHEDULE.	COMBINATION TEL/DATA OUTLET. PROVIDE FLUSH J-BOX @ +18" AFF U.N.O.W/ 1" CONDUIT WITH PULL WIRE TO MANAGER'S STATION.
SINGLE-POLE SWITCH @ 44" A.F.F. U.N.O. LOWER CASE LETTER DENOTES FIXTURE CONTROL. 300V, 20A.	T.V. SYSTEM DATA OUTLET. PROVIDE FLUSH J-BOX @ +18" A.F.F. U.N.O W/ 1" CONDUIT WITH PULL WIRE TO MANAGER'S STATION. WHEN SHOWN ADJACENT RECEPTACLE, MOUNT AT RECEPTACLE HEIGHT. REFER TO RECEPTACLE FOR MOUNTING HEIGHT.
LEVITON Renoir II WALLBOX DIMMER - SINGLE-POLE SWITCH @ 44" A.F.F. U.N.O. LOWER CASE LETTER DENOTES FIXTURE CONTROL. 120V, BALLAST 0-10V	SPECIAL PURPOSE RECEPTACLE MTD. @ 18" A.F.F. U.N.O., AMPERAGE AND PHASE AS NOTED ON PLANS, NEMA CONFIGURATION AS REQ'D.
OCCUPANCY SENSOR SWITCH WITH OFF CONTROL, AND ADJUSTABLE SETTINGS FOR TIME OFF DELAY, FOOTCANDLE LEVEL, AND MASKING. WATTSTOPPER OR EQUAL, MOUNT AT 44" A.F.F. U.N.O. USE PW-100 FOR OFFICES/CONF/ETC.	ISOLATED GROUND DUPLEX CONVENIENCE OUTLET (ORANGE), 20A, 125V, MTD @ +18" A.F.F.
LEVITON PROVOLT 05C20-MDW DIMMING DAYLIGHT SENSOR FOR SIDELIT DAYLIGHTING ZONES. LOCATE AND INSTALL PER MANUFACTURER'S INSTRUCTIONS. ALL CONTROLS SHALL COMPLY WITH LOCAL ENERGY CODE REQUIREMENTS. PROVIDE LOCAL MANUAL SWITCH AS SHOWN IN THE LIGHTING PLAN FOR ON / OFF CONTROL	DOUBLE DUPLEX CONVENIENCE OUTLETS UNDER COMMON COVER
ABBREVIATIONS	ISOLATED DOUBLE DUPLEX CONVENIENCE OUTLETS (ORANGE) 20A, 125V.
A. AMPERES	SPEAKER
AL. ALUMINUM	
A.F.F. ABOVE FINISHED FLOOR	MANUAL PULL STATION WITH KEYED RESET. MOUNT UNIT AT 44" A.F.F. ALIGN WITH LIGHT SWITCH IF APPLICABLE.
A.F.G. ABOVE FINISHED GRADE	XENON STROBE UNIT MOUNTED AT 80" A.F.F. OR 6" BELOW CEILING (WHICHEVER IS LOWER). MUST MEET OR EXCEED A.D.A. REQUIREMENTS.
C. CIRCUIT BREAKER	COMBINATION XENON STROBE AND HORN/CHIME UNIT MOUNTED AT 80" A.F.F. OR 6" BELOW CEILING (WHICHEVER IS LOWER). UNIT MUST MEET OR EXCEED A.D.A. REQUIREMENTS.
C/B CIRCUIT BREAKER	
CU. COPPER	FIRE ALARM CONTROL PANEL. MOUNT TOP OF UNIT AT 72" A.F.F.
DISC. DISCONNECT	FIRE ALARM ANNUNCIATION PANEL. MOUNT TOP OF UNIT AT 72" A.F.F.
F. FUSE	PHOTO ELECTRIC TYPE SMOKE DETECTOR.
GFI GROUND FAULT CURRENT INTERRUPTER	DUCT MOUNTED PHOTO ELECTRIC SMOKE DETECTOR.
GND. GROUND	RATE OF RISE HEAT DETECTOR.
H.P. HORSE POWER	
K. ELECTRICAL CONTRACTOR	
E.C. GENERAL CONTRACTOR	
G.C.	
M.C.B. MAIN CIRCUIT BREAKER	
M.L.O. MAIN LUGS ONLY	
MTD. MOUNTED	
P. POLE	
SW. SWITCH	
T.M.B. TELEPHONE MOUNTING BOARD	
TYP. TYPICAL	
U.N.O. UNLESS NOTED OTHERWISE	
V. VOLTS	
W. WIRE	
W.P. WEATHERPROOF	
XFMR. TRANSFORMER	
Ø. PHASE	

MC CABLE SHALL NOT BE USED. PREWIRED MC CABLE WHIPS FROM LIGHTING FIXTURES ARE ACCEPTABLE WHEN SUPPLIED WITH THE FIXTURE AND NO LONGER THAN 72".

ELECTRICIAN TO PROVIDE STAINLESS STEEL COVER PLATES FOR ALL LOW VOLTAGE OUTLETS.

IF PROVIDED UNDER SLAB ALL UNDERGROUND CONDUIT SHALL BE 12" BELOW FINISHED GRADE.



PANDA EXPRESS, INC.
1683 Walnut Grove Ave.
Rosemead, California
91770

Telephone: 626.799.9898
Facsimile: 626.372.8288

All ideas, designs, arrangement and plans indicated or represented by this drawing are the property of Panda Express Inc. and were created for use on this specific project. None of these ideas, designs, arrangements or plans may be used by or disclosed to any person, firm, or corporation without the written permission of Panda Express Inc.

REVISIONS:

ISSUE DATE:

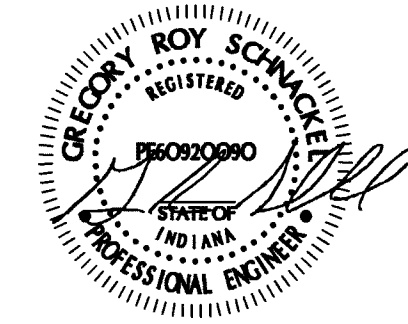
04/27/21 WALMART REVIEW
05/05/21 ISSUE FOR PERMIT

DRAWN BY:

PANDA PROJECT #: S8-22-D8044

PANDA STORE #: D8044

ARCH PROJECT #: Q511070001



Date: 05/05/21

05-05-21



New York • Omaha • Los Angeles • Seattle • Honolulu
800.581-0963 www.schnackel.com
see also website

PANDA EXPRESS

TRUE WARM & WELCOME
STATE ST. & NEW RD.
GREENFIELD, IN 46140

E-000

ELECTRICAL SYMBOLS
SPECIFICATIONS, NOTES

ELECTRICAL SYMBOLS

1

NOT TO SCALE

E-000

TRUE WARM & WELCOME 2300 R5

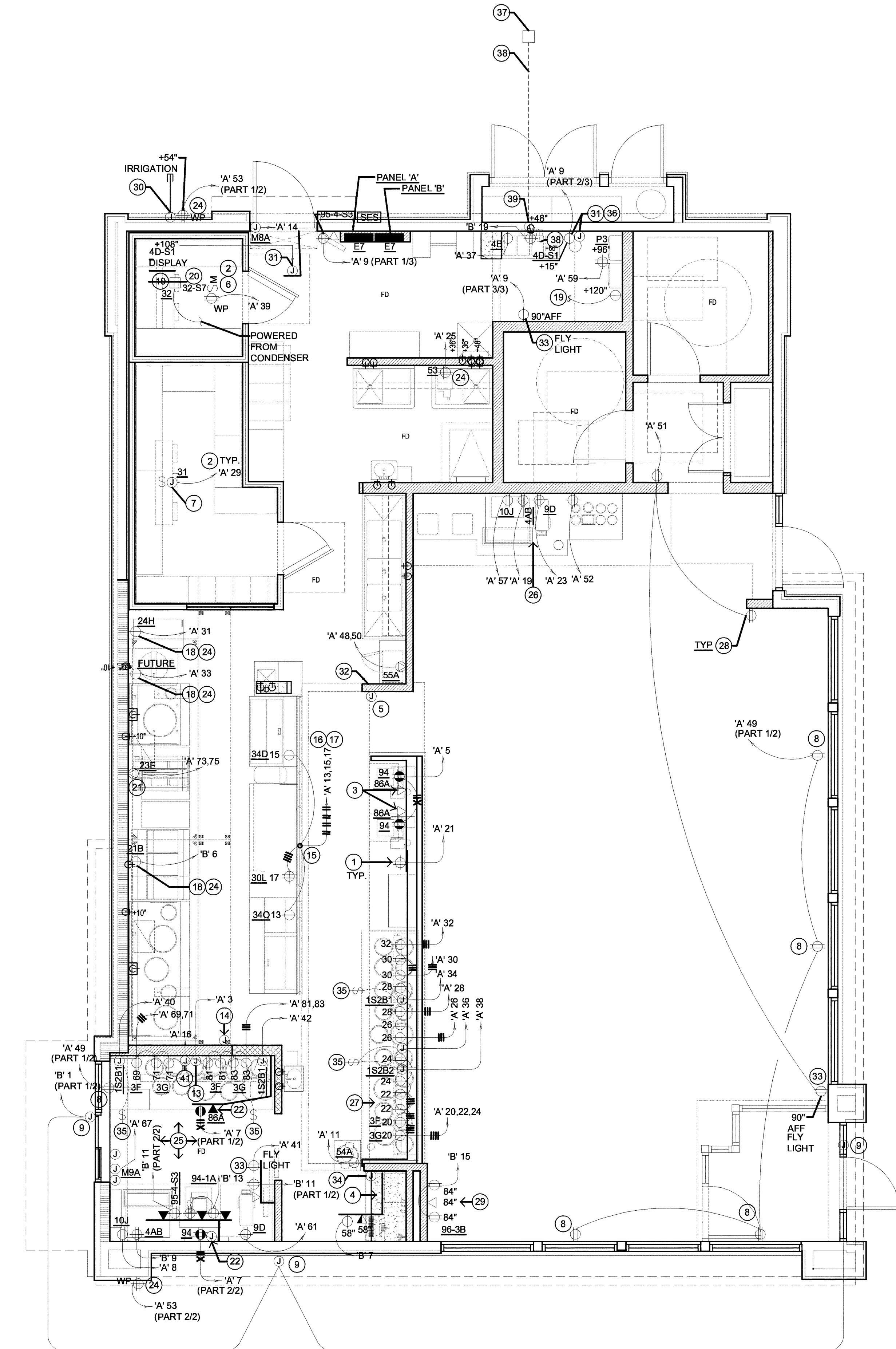
LIGHTING FIXTURE SCHEDULE					PROVIDED FOR INFORMATION ONLY. VERIFY AND INSTALL PER ELECTRICAL DRAWING				
ITEM	SYMBOL	DESCRIPTION	QTY.	MFR. & CAT. NO.	REMARK				
INTERIOR LIGHTING ITEM									
1		T-BAR CEILING RECESSED MOUNTED LED LIGHTING FIXTURE, 2' X 4', 120V BAKED-ON WHITE ENAMEL FINISH.	8	LSI FXTURE: SFP24-LED-50-UE-DIM-35	KITCHEN CEILING LIGHTS, FURNISHED BY OWNER INSTALLED BY GC				
2		T-BAR CEILING RECESSED MOUNTED LED LIGHTING FIXTURE, 2' X 4', 120V BAKED-ON WHITE ENAMEL FINISH.	1	LSI FXTURE: SFP22-LED-30-UE-DIM-35-U	KITCHEN CEILING LIGHTS, FURNISHED BY OWNER INSTALLED BY GC				
3		T-BAR CEILING RECESSED MOUNTED LED LIGHTING EMERGENCY FIXTURE, 2' X 4', 120V BAKED-ON WHITE ENAMEL FINISH.	3	LSI FXTURE: SFP24-LED-50-UE-DIM-EM	EMERGENCY KITCHEN CEILING LIGHTS FURNISHED BY OWNER INSTALLED BY GC				
4		UNIVERSAL MOUNT EXIT SIGN, LED LIGHTED, 120/277V WITH BATTERY PACK, 2 FACE, GREEN LETTER	3	EXITRONIX GXEX-UJ-BP-WB-BL-R6	EXIT SIGN FURNISHED BY OWNER, INSTALLED BY GC				
5		HOOD LIGHT	12	FURNISHED & INSTALLED BY EQUIPMENT SUPPLIER	LIGHTS SUPPLIED & PRE-WIRED BY HOOD VENDOR. ELECTRIC CONTRACTOR TO CONNECT MAIN WIRES TO SHUNT TRIP BREAKER AND HOOD CONTROL PANEL				
6		WALK-IN COOLER FLUORESCENT LIGHT, 120 V 48"	3	KASON FXTURE: # 1810LX4000	FURNISHED BY WIC VENDOR, G.R.E., INSTALLED BY GC				
7		DOWN LIGHT, RECESSED IN CEILING	42	ELITE HOUSING: LD8IC-AT LED MODULE: ELITE LED LIGHTING RL607-750L-DIMTR-120-30K-SN-SN-90+	FURNISHED BY OWNER, INSTALLED BY GC				
8		EMERGENCY DOWN LIGHT, RECESSED IN CEILING	6	ELITE HOUSING: LD8IC-AT LED MODULE: ELITE LED LIGHTING RL607-750L-DIMTR-120-30K-SN-SN-90+	EMERGENCY RECESSED DOWN LIGHT - NORMALLY ON INVERTER UNIT - ISOLITE, IM-12-LC-V1 FURNISHED BY OWNER INSTALLED BY GC				
9		3 3/4" ADJUSTABLE MR16 DOWN LIGHT, RECESSED IN CEILING	11	LIGHTOLIER: LYTCEASTER-378WHX FRAME-IN KIT: 302MRSPX BULB: MR16 - GE - PRECISE R 37 WATT 40 ° BEAM	FURNISHED BY OWNER, INSTALLED BY GC				
10		WHITE LED AT SERVICE COUNTER SOFFIT & DINING ROOM PARTIAL HEIGHT WALL	57 LF	LUXEM BRIGHT FXTURE: BLAZE LED	FURNISHED BY OWNER, INSTALLED BY GC				
11		12" DIA. DECORATIVE BAYLOR PENDANT LF INCANDESCENT	12	LBL LIGHTING, MODEL # P14610RB BULB: LED EDISON LAMP.1173467	FURNISHED BY OWNER, INSTALLED BY GC				
12		12" DIA. DECORATIVE MORILL PENDANT LF INCANDESCENT	5	LBL LIGHTING, MODEL # 6227801-839 BULB: LED EDISON LAMP.1173467	FURNISHED BY OWNER, INSTALLED BY GC				
13		MICRO INVERTER	1	ISOLITE #MMI 125	FURNISHED BY OWNER, INSTALLED BY GC				
14		SPEAKER	-	-	FURNISHED BY MUSIC VENDOR, INSTALLED BY MUSIC VENDOR				
NIGHT LIGHTING REQUIREMENTS: "NL" DESIGNATION INDICATED NIGHT LIGHT ON UNSWITCHED CIRCUIT. 1. ONE NL BY SERVICE COUNTER, POS / CASHIER 2. ONE NL BY POS / CASHIER AT DRIVE THRU STATION IF APPLICABLE 3. ONE NL BY EACH EXIT DOORS IN DINNING ROOM & BACK OF HOUSE									
EXTERIOR LIGHTING									
1		LINEAR LIGHT AT EXTERIOR STORAGE ROOM	1	COOPER MX-4V72-LD44-DR-UNV-L840-CD1-WL-U	FURNISHED BY OWNER, INSTALLED BY GC				
2		NAVILITE EMERGENCY LIGHT	2	EXITRONIX MLEB1-G-WP	OVER EXTERIOR ENTRANCE & SERVICE DOORS, REFER ELEVATIONS FOR HEIGHT, FURNISHED BY OWNER, INSTALLED BY GC				
3		EXTERIOR RECESS EMERGENCY LIGHT	1	ELITE HOUSING: LD8IC-AT LED MODULE: ELITE LED LIGHTING WET LOCATION: RL607-14W-120-FL-30K-SN-SN-WET LOCATION	EMERGENCY RECESSED DOWN LIGHT - NORMALLY ON INVERTER UNIT - ISOLITE, IM-12-LC-V1 FURNISHED BY OWNER INSTALLED BY GC				
4		DECORATIVE LED WALL SCONCE	4	HINKLEY LIGHTING, ATLANTIS, BRONZE; 1649BZ-LED	AT PORTAL OF ENTRY DOOR. REFER ELEVATIONS FOR HEIGHT FURNISHED BY OWNER, INSTALLED BY GC				
5		LED MOTION SECURITY FLOODLIGHT	2	LITHONIA LIGHTING OLF 2RH 40K 120V MO BZ	FURNISHED BY OWNER, INSTALLED BY GC				
6		DECORATIVE LED WALL SCONCE	4	HINKLEY LIGHTING, KORE, BRONZE; 1872BZ-LED	ALONG REAR EIFS BAND FURNISHED BY OWNER, INSTALLED BY GC				

LIGHTING FIXTURE SCHEDULE 2
NOT TO SCALE E-001

EQUIPMENT SCHEDULE																				01-11-19								
PLUMBING										ELECTRICAL					DESCRIPTION													
FS INDIRECT CONNECTION TO FLOOR SINK										D DIRECT CONNECTION					O OWNER(PANDA EXPRESS, INC.)													
D DIRECT CONNECTION										C CONVENIENT OUTLET					K KITCHEN													
RIH ROUGH IN HEIGHT (TO CENTER OF CONNECTION)										FSO FLOOR STUB OUT					EC ELECTRICAL CONTRACTOR													
										DC DROPPED CORD					KEC KITCHEN EQUIPMENT COMPANY													
SUPPLY BY	GAS		WASTE		COLD WATER		HOT WATER		CONNECTION	LOAD	PHASE	H.P.	VOLTS	REMARKS	DIMENSIONS	MANUFACTURE	MODEL #	EQUIPMENT		NO.								
	K	BTU	R.I.H.	SIZE	TYPE	SIZE	R.I.H.	SIZE	R.I.H.	SIZE	R.I.H.	TYPE	WATT		W x D x H (ø x H)													
SERVING AREA EQUIPMENT																												
O															SEE DETAIL	SEE PLAN	KEC	CUSTOM	HOT WELLS COUNTER SERVICE	1B								
O															SEE DETAIL	SEE PLAN	KEC	CUSTOM	SNEEZE GUARD	1S2								
O															3 HEATING ELEMENTS	42.375" X 4.25" X 2.375"	GENERAL		43" RADIANT TOP HEATER	1S2B1								
O															4 HEATING ELEMENTS	36.375" X 4.25" X 2.625"	GENERAL		56" RADIANT TOP HEATER (2)	1S2B2								
O															3 HEATING ELEMENTS	42 1/8" X 4.25" X 5/8"	GENERAL		43" RADIANT TOP HEATER (2)	1S2S16								
O															SEE DETAIL	SEE PLAN	KEC	CUSTOM	CASHER & BEVERAGE COUNTER	2Q								
O															INDUCTION WARMER	15 3/4" DIA	I/O CONTROLS CORP	ABC-065-14	INDUCTION WELL - 11QT	3F								
O															INDUCTION WARMER	12 1/8" DIA	I/O CONTROLS CORP	ABC-065-10	INDUCTION WELL - 11QT	3G								
O															C	9.3A	1		120	W/LD DISPENSER	30"x30"x35"	CORNELIUS	IOC-255	BEVERAGE DISPENSER	4AB			
O															C	7.2A	1		120	ON S/S SHELF	15"x11"x16"	WELBILT	16-2172	BOOSTER	4B			
O																					40"x18"	WELBILT	15-2903-IP	SODA RACK	4C			
O																					ø22"	NUCO2	PER MFG	CO2 TANK	4D			
O																					CO2Meter.com	RAD-0102-6	CO2 MONITOR & DISPLAY	4D-S1				
O																					BEV190-56164-01	WATER FILTER		4F				
O																									36" COLD PAN	5C		
O																									S/S COUNTER WITH SINK	6B		
O																									HOT WELLS COUNTER- DRIVE THRU	6F		
O																									CASHER & BEVERAGE COUNTER-DT	9B		
O																									ICED TEA BREWERY (2)	9D		
O																									800 LBS. ICE MACHINE	10J		
O																									REMOTE CONDENSER	10J-S1		
O																									CUBER HALF DICE CUBE	10L		
O																									STORAGE BIN	10L-S1		
KITCHEN EQUIPMENT																												
O	450	10"	1-1/2"	FS	2"	10"	1/2"								SEE DETAIL	93"x42"	KEC	CUSTOM	93" CHINESE RANGE (L)	20A								
O	190	10"	1"	FS	2"	10"	1/2"								SEE DETAIL	42"x42"	KEC	CUSTOM	42" CHINESE RANGE	20Q								
O	122 EA	14"	1 1/2"												24" C	-	1		120							MA45-FPP345G	FRYER	21B
O	54	10"	3/4"																									
O	8																											
O	34.6	10" & 32"	3/4"																									
O																												
O																												
O																												
O																												
O																												
O																												
O																												
O																												
O																												
O																												
O																												
O																												
O																												
O																												
O																												
O																												
O																												
O																												
O																												
O																												
O																												
O																												
O																												
O																												
O																												
O																												
O																												
O																												
O																												
O																												
O																												
O																												
O																												
O																												
O																												
O																												
O																												
O																												
O																												
O																												
O																												
O																												
O																												
O																												
O																												
O																												
O																												
O																												
O																												
O																												
O																												
O																												
O																												
O																												
O																												
O																												
O																												
O																												
O																												
O																												
O																												
O																												
O																												
O																												
O																												
O																												
O																												
O																												
O																												

- ALL CIRCUITRY/CONDUIT FOR FRONT LINE EQUIPMENT TO BE ROUTED IN CASEWORK TO J-BOX IN WALL AND CONCEALED IN WALL.
- PROVIDE SEALS AND EXPANSION COUPLINGS ON ALL CONDUITS ENTERING OR LEAVING AREA OF TEMPERATURE DIFFERENCE. REFER TO WIRING NOTES 6/E-400 FOR ADDITIONAL INFORMATION.
- PROVIDE (2) 1-1/2" CONDUITS WITH PULL STRINGS FROM CASH REGISTER TO MANAGER STATION. SEE P.O.S. AND SERVICE LINE ELEVATIONS, 3/E-200.
- SEE 'MANAGER STATION ELEVATION' 1/E-200 FOR ADDITIONAL OUTLETS AND J-BOXES.
- ANSUL PULL STATION. REFER TO DETAIL, 2/E-400.
- REFER TO 'LTG AND DOOR HEATER' WIRING DIAGRAM, 10/E-400.
- REFER TO 'COOLER EVAPORATOR COIL' WIRING DIAGRAM, 8/E-400.
- SHOW WINDOW RECEPTACLE SHALL BE CONTROLLED VIA SWITCH 'b'. REFER TO LIGHTING SWITCHBANK SCHEDULE, SHEET 4/E101. RECEPTACLE SHALL BE MOUNTED IN WALL AS CLOSE TO TOP OF STRUCTURAL HEADER AS POSSIBLE.
- BUILDING SIGNAGE/LOGO DEDICATED/PROPOSED W.P. J-BOX FOR SIGNAGE. COORDINATE LOCATION WITH ARCHITECT / OWNER / SIGN PACKAGE PRIOR TO ROUGH-IN. SIGN DISCONNECT PROVIDED BY SIGN CONTRACTOR.
- REFER TO 'FREEZER EVAPORATOR COIL' WIRING DIAGRAM, 9/E-400. THE FAN COIL UNIT IS POWERED FROM THE CONDENSER UNIT VIA DISCONNECT CONNECTION. HEAT TAPE PROVIDED AND INSTALLED BY ELECTRICIAN.
- NOT USED.
- NOT USED.
- HOOD CONTROL PANEL/ANSUL SYSTEM CABINET. MOUNT CABINET DIRECTLY BELOW T-BAR CEILING.
- PROVIDE 2-GANG J-BOX @ 48" AFF FOR HOOD CONTROL SWITCHES. REFER TO M-400 AND M-401.
- 1" CONDUIT STUB UP LOCATION IN STAINLESS STEEL POWER PANEL FOR ISLAND KITCHEN EQUIPMENT CONNECTION. REFER TO DETAIL 2/A-108. COORDINATE LOCATION WITH ARCHITECT / OWNER.
- ROUTE CABLING / CIRCUITRY THROUGH 1" CONDUIT IN SLAB.
- UTILIZE SEAL TIGHT CONDUIT FOR ALL WIRING INCLUDED ALONG LOW WALL PANEL.
- ALL DEVICES UNDER HOOD TO BE PROVIDED AND INSTALLED WITH GROUND FAULT CIRCUIT BREAKER AND WATERPROOFING BOX (RED DOT #CKSUV). REFER TO COOKLINE ELECTRICAL ELEVATIONS, 6/E-200. ROUTE HOMERUN THROUGH CONTRACTOR INTERFACED WITH THE HOOD FIRE SUPPRESSION SYSTEM. REFERENCE 13/E-400 FOR ADDITIONAL INFORMATION.
- SIMPLEX RECEPTACLE TO BE CONNECTED TO BACK-OFF-HOUSE LIGHTING CIRCUITRY/CONTROL. CONTRACTOR TO PROVIDE PIGTAIL FROM CIRCULATION PUMP.
- PROVIDE WEATHERPROOF RECEPTACLE FOR HEAT TAPE. COORDINATE FINAL LOCATION WITH REFRIGERATION INSTALLER.
- ELECTRIC GRIDDLE '23E'. FEED WITH (2) #6, (1) #10 GROUND, 3/4" CONDUIT. REFER TO 4/E-200.
- SEE DRIVE THRU ELEVATION 2/E-200 FOR CONDUIT SIZES AND CONFIGURATIONS.
- NOT USED.
- PROVIDE WATERPROOFING, COVER, IN-USE RED DOT (#CKSUV).
- SEE FOR DRIVE-THRU ELEVATIONS, 2/E-200.
- SEE DRINK STATION ELEVATIONS, 5/E-200.
- SEE 3/E-200 FOR SERVICE LINE ELEVATIONS.
- SEE DEVICE / RECEPTACLE SCHEDULE 3/E400.
- SEE DINING ROOM MONITOR ELEVATION, DETAIL 8/E-200.
- PROVIDE AND INSTALL 3/4" CONDUIT AND PULL STRING FROM CLOSEST LANDSCAPE AREA, THROUGH WALL UP TO EMPTY FLUSH MOUNTED JUNCTION BOX @ 54" A.F.F. (FOR IRRIGATION CONTROLS). CLOSE OFF CONDUIT IN LANDSCAPE AREA WITH REMOVABLE CAP. UTILIZE WP CIRCUIT A-53 NEAR ENTRY POINT.
- REFER TO 9/E-200 FOR LOCATION/INSTALLATION OF C02 DEVICE.
- SEE SWITCH BANK ELEVATION, DETAIL 7/E-200.
- FLY LIGHT RECEPTACLE SHALL BE INSTALLED WITH A RECESSED CLOCK SIMPLEX OUTLET. TYP OF ALL LOCATIONS.
- SEE SECURITY KEY PAD ELEVATION 1/E200.
- CONNECT HEAT LAMPS TO COUNTER-MOUNTED SWITCH PROVIDED AND INSTALLED BY CONTRACTOR. COORDINATE EXACT LOCATION WITH KITCHEN EQUIPMENT PROVIDER.
- PANDA EXPRESS TO PROVIDE C02 MONITOR. E.C. TO MOUNT OVER J-BOX WITH WIRING THROUGH WALL CONDUIT FOR CLEAN INSTALLATION. PROVIDE ALL OTHER REQUIRED CONNECTIONS AND COMPONENTS FOR FULLY WORKING SYSTEM.
- PROVIDE IN-GRADE QUAZITE 8"x8" PC STYLE POLYMER CONCRETE BOX OR EQUAL FOR UNDERGROUND CABLE REQUIRED FOR THE STORE. PART NO. PC081XXXXX OR SIMILAR. REFER TO ELECTRICAL SITE PLAN 1/E105.
- PROVIDE 1" CONDUIT FOR CABLE DEDICATED FOR ENTIRE STORE FROM IN-GRADE 8X8 QUAZITE BOX TO EXTERIOR CLOSET 6X6 FLUSH MOUNTED JUNCTION BOX. TERMINATE INTERIOR ABOVE CEILING.
- PROVIDE FLUSH MOUNTED NEMA 1 6X6 JUNCTION/PULL BOX AT +48" - HUBBELL OR EQUAL. ROUTE CABLE FROM EXTERIOR 6X6 IN 1" CONDUIT THROUGH BUILDING. TERMINATE INTERIOR ABOVE CEILING.
- NOT USED.
- FIRE SUPPRESSION SHUTDOWN CONTACTOR LOCATED ABOVE CEILING, REFER TO 13/E-400.

- VERIFY QUANTITIES AND REQUIREMENTS OF ALL HVAC & KITCHEN EQUIPMENT PRIOR TO ROUGH IN.
- ALL TELEPHONE/DATA/TV CABLES AND WIRES, AND TERMINATIONS OF ALL REQUIRED CABLE AND JACKS WILL BE INSTALLED BY THIRD PARTY.
- POWER SUPPLY FOR COMPUTER AND CASH REGISTER (86A & 94) SHALL BE ON THE SAME CIRCUIT BREAKER, WISOLATED GROUND & ORANGE RECEPTACLE.
- ALL CIRCUITRY SHOWN WITHOUT TICKS SHALL HAVE (2) WIRES PLUS EQUIPMENT GROUNDING CONDUCTOR.
- WHEN WORKING IN JURISDICTIONS WHICH HAVE ADOPTED THE 2017 NEC OR LATER, ALL MULTI-WIRE BRANCH CIRCUITS SHALL HAVE SEPARATE NEUTRALS TO MEET THE REQUIREMENTS OF 2017 NEC 210.4(B).
- TRANSFORMERS SHALL BE MOUNTED ABOVE CEILING BELOW TRUSSES WITH LOW VOLTAGE WIRING FEEDING TO ALL EXTERIOR LIGHTS.
- ALL UNDERGROUND CONDUIT SHALL BE 12" BELOW F.F.



PANDA EXPRESS, INC.
1683 Walnut Grove Ave.
Rosemead, California
91770
Telephone: 626.799.9898
Facsimile: 626.372.8288

All ideas, designs, arrangement and plans indicated or represented by this drawing are the property of Panda Express Inc. and were created for use on this specific project. None of these ideas, designs, arrangements or plans may be used by or disclosed to any person, firm, or corporation without the written permission of Panda Express Inc.

REVISIONS:

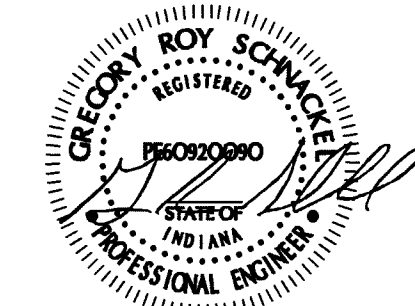
NO.	DATE	DESCRIPTION

ISSUE DATE:

04/27/21	WALMART REVIEW
05/05/21	ISSUE FOR PERMIT

DRAWN BY:

PANDA PROJECT #: S8-22-D8044
PANDA STORE #: D8044
ARCH PROJECT #: Q511070001



Date: 05/05/21 05-05-21



PANDA EXPRESS

TRUE WARM & WELCOME
STATE ST. & NEW RD.
GREENFIELD, IN 46140

E-100

POWER FLOOR PLAN

TRUE WARM & WELCOME 2300 R5

[illegible]

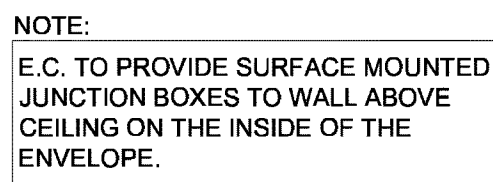
Date: 05/05/21

05-05-21



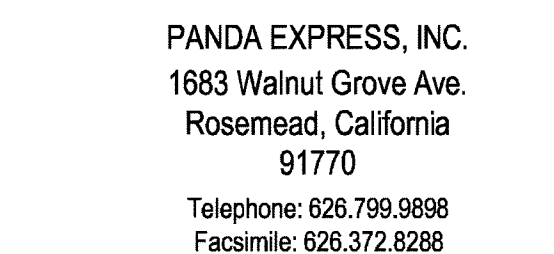
CANOPY LIGHTING PLAN

TRUE WARM & WELCOME 2300 R5



- | | | |
|---|-----------------------------|---------|
| # | CANOPY LIGHTING KEYED NOTES | 2 |
| | NOT TO SCALE | E-101.1 |

CANOPY LIGHTING PLAN	1
Scale: 1/4"=1'-0"	E-101.1

[illegible]

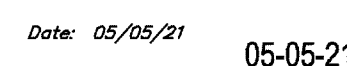
DRAWN BY:

[REDACTED]

PANDA PROJECT #: S8-22-D8044

PANDA STORE #: D8044

ARCH PROJECT #: Q511070001



LIGHTING FLOOR PLAN

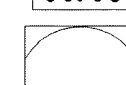
TRUE WARM & WELCOME 2300 R5



- CONTRACTOR SHALL PROVIDE ALL REQUIRED HARDWARES, BRACKETS, ETC. FOR A COMPLETE LIGHTING FIXTURE INSTALLATION.
- FIXTURES THAT ARE TO BE ROUTED VIA TIMECLOCKS ARE SHOWN ON DETAIL 11/E400. SEQUENCE OF OPERATION: TIMECLOCKS WIRED FIRST FOR DESIGNATED CONTROL. SWITCHES ARE SERIALIZED WITH THE CONTACTORS. UTILIZE DIGITAL OVERRIDE TIME SWITCH (DOTS) TO OVERRIDE THE TIMECLOCKS FOR CLEANING AND AFTER HOURS AS NEEDED. SEE DETAIL 11/E400
- ALL LIGHTING FIXTURES SHALL BE SUPPORTED PER N.E.C. 410-16(C) SEE DETAIL 4/E400.
- CONTRACTOR SHALL INSTALL ALL LIGHTING FIXTURES INCLUDING OWNER-FURNISHED FIXTURES.
- ALL FIXTURE BALLASTS SHALL BE U.L. LISTED.
- E.C. SHALL INSTALL OWNER SUPPLIED LED STRIP LIGHTING & CUT TO PROPER LENGTH. COORDINATE WITH OWNER FOR EXACT LENGTHS AND FINAL LOCATIONS.
- WHEN WORKING IN JURISDICTIONS WHICH HAVE ADOPTED THE 2008 NEC OR LATER, ALL MULTI-WIRE BRANCH CIRCUITS TO HAVE SEPARATE NEUTRALS TO MEET THE REQUIREMENTS OF 2008 NEC 240.4(B).
- ALL CIRCUITRY SHOWN WITHOUT Ticks SHALL HAVE (2) WIRES PLUS EQUIPMENT GROUNDING CONDUCTOR.
- N.L. DESIGNATION INDICATES NIGHT LIGHT ON UNSWITCHED CIRCUIT.

NOTE:
FIXTURES TO BE ROUTED VIA TIME TIMECLOCKS ARE SHOWN ON
DETAIL 11/F400

NOTE:
CONTRACTOR TO INSTALL (2) 5 GANG SWITCH BOXES AS SHOWN
BELOW. DO NOT INSTALL SEPERATE/INDIVIDUAL BOXES FOR EACH
SWITCH

(a)	(b)	(c)	(d)	(e)
\$	\$	\$	\$	\$
BACK OF HOUSE LTG & EX. FAN & RECIRC PUMP	SHOW WINDOW RECEPS	WALK-IN, MENU LED ACCENTS	SERVING LINE SOFFIT	DINING PENDANTS
(f)	(g)	(h)	(i)	60:00
\$	\$	\$	\$	
INTERIOR DINING	BEV. COUNTER	DAYLIGHT HARVEST	SPARE	INTERIOR LIGHTING SHUT DOWN OVERRIDE

SWITCHBANK SCHEDULE 'A'				
TAG	SWITCH TYPE	AREA SERVED / SWITCH LABEL	CIRCUIT	LOAD
a	TOGGLE SWITCH	BACK-OF-HOUSE / RR FANS	'A' 45	530 VA
b	TOGGLE SWITCH	SHOW WINDOW RECEP	'A' 49	720 VA
c	TOGGLE SWITCH	WALK-INS, MENU, LED ACCENTS	'A' 1	275 VA
d	TOGGLE SWITCH	SERVING LINE SOFFIT	'A' 45	140 VA
e	TOGGLE SWITCH	DINING PENDANTS	'A' 47	24 VA
f	TOGGLE SWITCH	INTERIOR DINING	'A' 47	118 VA
g	TOGGLE SWITCH	BEVERAGE COUNTER	'A' 47	16 VA
h	TOGGLE SWITCH	DAYLIGHT HARVESTING ZONE	'A' 47	219 VA
i	SPARE			
j	SPARE			

INTERIOR / EXTERIOR LTG CONTACTORS SCHEDULE	4
NOT TO SCALE	E-101

LIGHTING FLOOR PLAN	1
Scale: 1/4"=1'-0"	E-101



PANDA EXPRESS, INC.
1683 Walnut Grove Ave.
Rosemead, California
91770
Telephone: 626.799.9898
Facsimile: 626.372.8288

All ideas, designs, arrangement and plans indicated or represented by this drawing are the property of Panda Express Inc. and were created for use on this specific project. None of these ideas, designs, arrangements or plans may be used by or disclosed to any person, firm, or corporation without the written permission of Panda Express Inc.

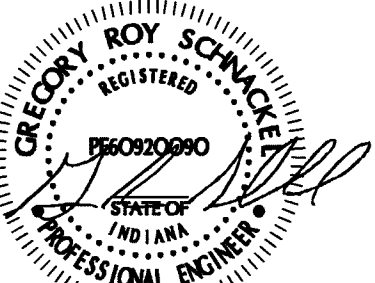
REVISIONS:

ISSUE DATE:

04/27/21 WALMART REVIEW
05/05/21 ISSUE FOR PERMIT

DRAWN BY:

PANDA PROJECT #: S8-22-D8044
PANDA STORE #: D8044
ARCH PROJECT #: Q511070001



Date: 05/05/21 05-05-21

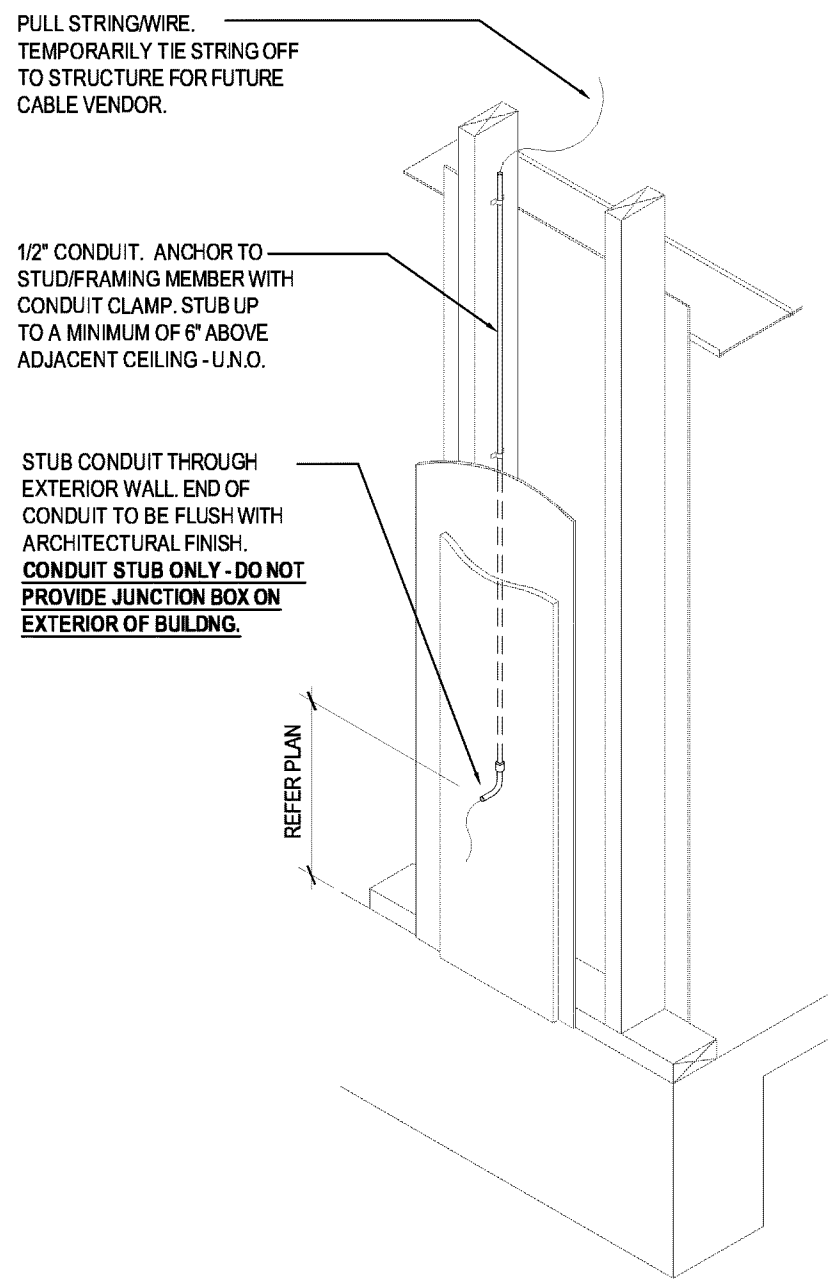
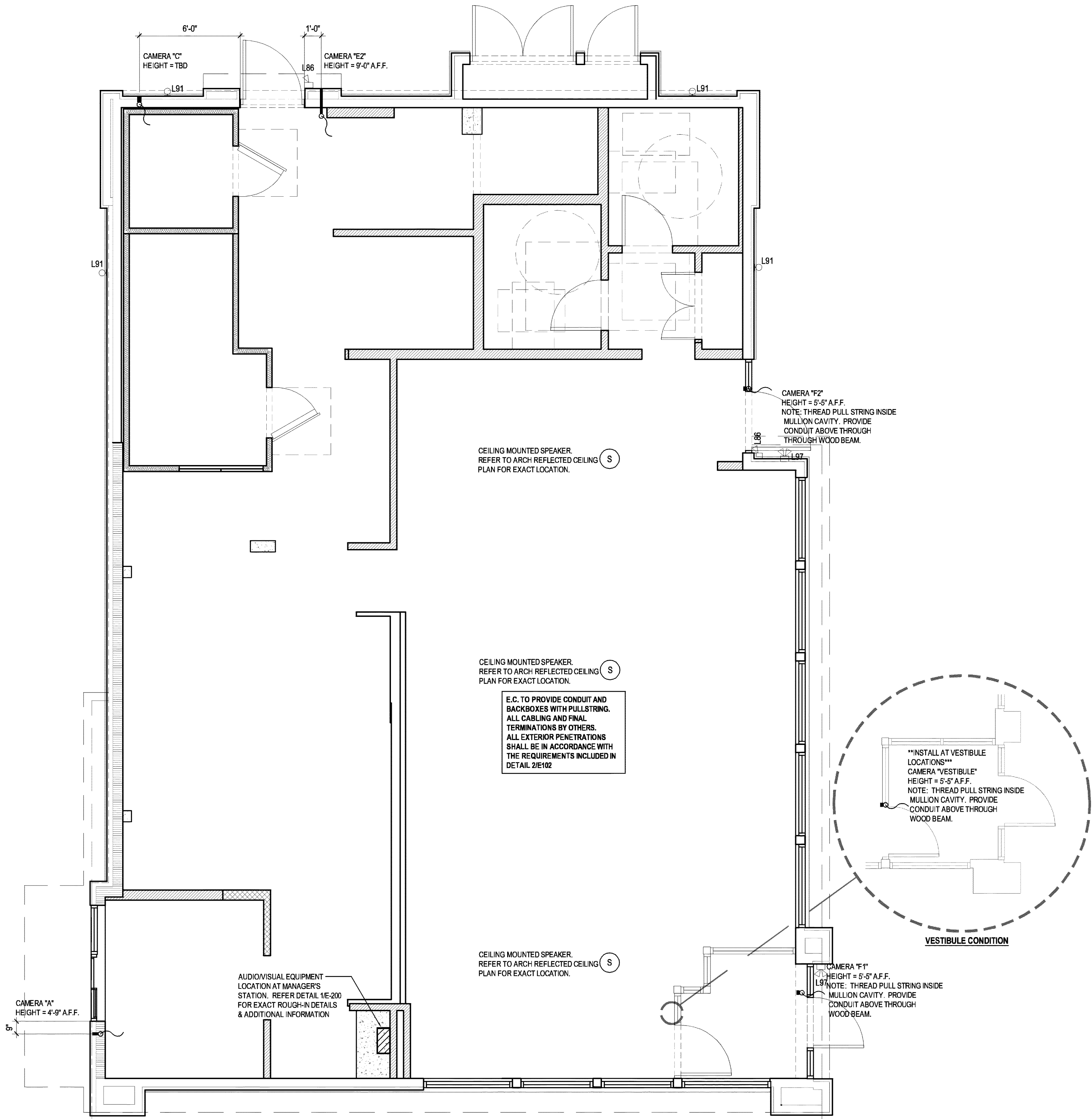


PANDA EXPRESS
TRUE WARM & WELCOME
STATE ST. & NEW RD.
GREENFIELD, IN 46140

E-102

SECURITY CAMERA PLAN

TRUE WARM & WELCOME 2300 R5



CONDUIT ROUGH-IN DETAIL 2
NOT TO SCALE E-102

SECURITY CAMERA PLAN 1
Scale= 1/4" = 1'-0" E-102



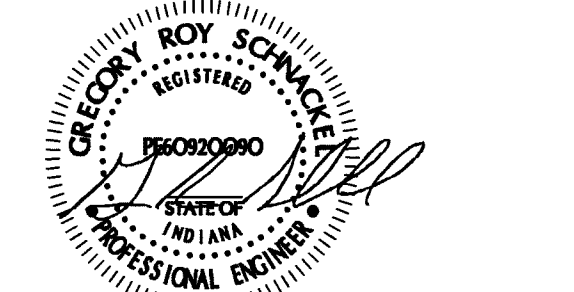
PANDA EXPRESS, INC.
1683 Walnut Grove Ave.
Rosemead, California
91770
Telephone: 626.799.9898
Facsimile: 626.372.8288

All ideas, designs, arrangement and plans indicated or represented by this drawing are the property of Panda Express Inc. and were created for use on this specific project. None of these ideas, designs, arrangements or plans may be used by or disclosed to any person, firm, or corporation without the written permission of Panda Express Inc.

REVISIONS:	
ISSUE DATE:	
04/27/21	WALMART REVIEW
05/05/21	ISSUE FOR PERMIT

DRAWN BY:

PANDA PROJECT #: S8-22-D8044
PANDA STORE #: D8044
ARCH PROJECT #: Q511070001



Date: 05/05/21 05-05-21



PANDA EXPRESS
TRUE WARM & WELCOME
STATE ST. & NEW RD.
GREENFIELD, IN 46140

E-104

ROOF POWER PLAN

TRUE WARM & WELCOME 2300 R5

- ALL ROOF MOUNTED EQUIPMENT SHALL BE IN NEMA-3R ENCLOSURES.
- ALL CONDUIT RUNS SHOWN ON THE ROOF SHALL BE RUN BELOW IN THE CEILING SPACE WHERE AMBIENT TEMPERATURE WILL BE BELOW 30° C. FINAL CONNECTIONS TO THE ROOF EQUIPMENT IS LIMITED TO 5'-0" OF DIRECT SOLAR EXPOSURE.
- VERIFY ALL FUSE SIZES AND TYPES WITH THE MECHANICAL EQUIPMENT MANUFACTURER PRIOR TO INSTALLATION.
- REVIEW THE MECHANICAL PLANS FOR HVAC CONTROL REQUIREMENTS AND SCOPE OF WORK PRIOR TO BIDDING AND INCLUDE ALL COSTS IN BID.
- VERIFY CONNECTION POINTS OF ALL HVAC EQUIPMENT PRIOR TO INSTALLATION. PROVIDE CONTROL VOLTAGE CONNECTION TO DUCT MTD. SMOKE DETECTOR AS REQUIRED BY MECHANICAL DRAWING M-100 AND INTERLOCK WITH FIREALARM.
- SEE MECHANICAL DRAWINGS FOR EXACT LOCATIONS OF MECHANICAL EQUIPMENT AND THERMOSTATS. PROVIDE RACEWAY SYSTEM FOR ALL CONTROL WIRING AS REQUIRED BY MECHANICAL DRAWING M-100.
- E.C. COORDINATE ELECTRICAL, MECHANICAL, FIRE ALARM (IF REQUIRED) FOR INTERLOCK SEQUENCE FOR FIRE SUPPRESSION.
- RESTROOM EXHAUST FAN TO BE POWERED FROM BACK OF HOUSE LIGHTING CIRCUIT. SEE DETAIL 5/E400 FOR ADDITIONAL INFORMATION.

ROOF PLAN GENERAL NOTES 2

NOT TO SCALE E-104

- ROUTE HOMERUN THROUGH BACK OF HOUSE LIGHTING CIRCUIT. REFER TO LIGHTING CONTACTOR SCHEDULE, 4/E-101. FAN TO BE CONTROLLED BY SWITCH FOR BACK OF HOUSE LIGHTING.
- DUCT SMOKE DETECTOR, FURNISHED BY MECHANICAL/FACTORY, WIRED BY ELECTRICAL / FIRE ALARM CONTRACTOR. FURNISH AND INSTALL ALL RACEWAY, WIRING, AND ADDITIONAL ACCESSORIES REQUIRED FOR CODE COMPLIANCE AND UNIT SHUTDOWN.
- CIRCUIT FEEDS FROM PANELBOARD - THROUGH HOOD CONTROL PANEL - UP TO ROOF. REFER TO DETAIL, SHEET 3/E-401 & KITCHEN HOOD SUBMITTAL DATA.
- REFER TO CONDENSING UNIT WIRING DIAGRAM, 7/E-400.
- STRUT RACK SUPPORT FOR EQUIPMENT DISCONNECT SWITCHES. REFER TO DETAIL, SHEET 2/E-401.
- PROVIDE OUTLET WITH RED DOT INUSE COVER AT PARAPET +24" ABOVE ROOF FOR HEAT TAPE. HEAT TAPE PROVIDED BY OTHERS.
- DO NOT INSTALL UNTIL BACK DRAFT DAMPER INSTALLATION IS COMPLETE. UTILIZE FACTORY KNOCKOUTS FOR ELECTRICAL RUN FOR THIS FAN. REFER TO SHEET M-402.
- NOT USED.
- STUB ELECTRICAL FEED FOR EF-1 & EF-2, THROUGH ROOF ON HINGE SIDE OF EXHAUST FANS, IN LOCATION AS SHOWN ON POWER ROOF PLAN. REFER TO DETAIL 3/M-501 FOR ADDITIONAL DETAILS.
- ROUTE POWER FEEDS VIA FACTORY PROVIDED THRU-BASE CONNECTION AREA. COORDINATE WITH MECHANICAL.
- UNIT INCLUDES FACTORY MOLDED CASE DISCONNECT SWITCH (NO OCP). VERIFY WITH MECHANICAL SUBMITTAL DATA. PROVIDE DISCONNECT IF / AS REQUIRED.

ROOF PLAN KEYED NOTES 3

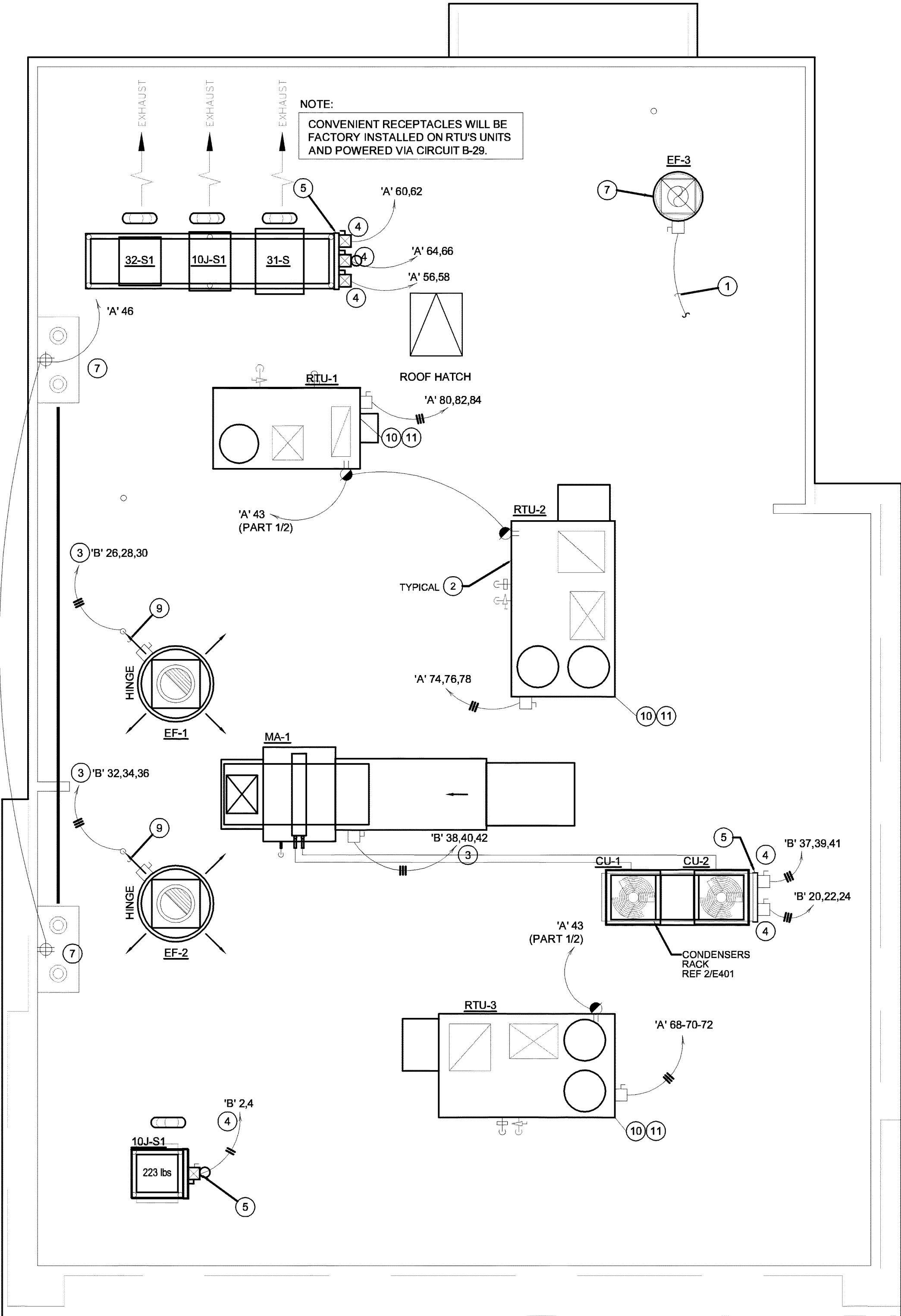
NOT TO SCALE E-104

ROOFTOP EQUIPMENT SCHEDULE										
TAG	DESCRIPTION	KW	H.P.	FLA	VOLT/Ø	WIRE, CONDUIT	CONN.	MOUNT HEIGHT	DISC. SW. WITH RK1 FUSES PER MFR'S REQ'S. AND/OR REMARKS	
RTU1	A/C UNIT (LENNOX)			33.0	208V.3Ø	3 #8, #10 GND., 1" C.	<input type="checkbox"/> AT UNIT		60A. 3P. 3F. WP ①④	
RTU2	A/C UNIT (LENNOX)			46.0	208V.3Ø	3 #6, #10 GND., 1" C.	<input type="checkbox"/> AT UNIT		60A. 3P. 3F. WP ①④	
RTU3	A/C UNIT (LENNOX)			46.0	208V.3Ø	3 #6, #10 GND., 1" C.	<input type="checkbox"/> AT UNIT		60A. 3P. 3F. WP ①④	
CU-1	CONDENSING UNIT			21.4	208V.3Ø	3 #10, #10 GND., 1" C.	<input type="checkbox"/> AT UNIT		30A. 3P. 3F. WP	
CU-2	CONDENSING UNIT			21.4	208V.3Ø	3 #10, #10 GND., 1" C.	<input type="checkbox"/> AT UNIT		30A. 3P. 3F. WP	
MA-1	MAKE-UP AIR UNIT		5.0	15.0	208V.3Ø	3 #12, #12 GND., 3/4" C.	<input type="checkbox"/> AT UNIT		①④	
EF-1	EXHAUST FAN		2.0	5.9	208V.3Ø	3 #12, #12 GND., 3/4" C.	<input type="checkbox"/> AT UNIT		①	
EF-2	EXHAUST FAN		2.0	5.9	208V.3Ø	3 #12, #12 GND., 3/4" C.	<input type="checkbox"/> AT UNIT		①	
EF-3	EXHAUST FAN		1/4	4.8	120V.1Ø	2 #12, #12 GND., 3/4" C.	<input type="checkbox"/> AT UNIT		30A. 2P. 1F. WP ①④	
31-S	W/I COOLER COND.			27.0	208V.1Ø	2 #10, #10 GND., 3/4" C.	<input checked="" type="checkbox"/> AT UNIT		②③	
32-S1	W/I FREEZER COND.			32.0	208V.1Ø	2 #8, #8 GND., 3/4" C.	<input checked="" type="checkbox"/> AT UNIT		30A. 2P. 2F. WP ②③	
10J-S1	ICE MACHINE COND.			11.7	208V.1Ø	2 #12, #12 GND., 3/4" C.	<input checked="" type="checkbox"/> AT UNIT		②③	

- ① DISCONNECT SWITCH PROVIDED WITH UNIT.
- ② COMBINATION 30A. 2P. 2F. WP DISCONNECT SWITCH WITH RK5 FUSES PER MANUFACTURER RECOMMENDATION.
- ③ COMBINE CIRCUITRY IN 1" CONDUIT FROM J-BOX ON EQUIPMENT DISCONNECT SWITCH SUPPORT. REFER TO DETAIL THIS SHEET, 1 / E-104.
- ④ ELECTRICAL FEEDS ARE TO BE ROUTED FROM PLENUM SPACE, UP THROUGH EQUIPMENT CURB, INTO BOTTOM OF EQUIPMENT, THROUGH FACTORY INSTALLED WATER TIGHT CONNECTIONS.

HVAC EQUIPMENT SCHEDULE 4

NOT TO SCALE E-104



ROOF POWER PLAN 1

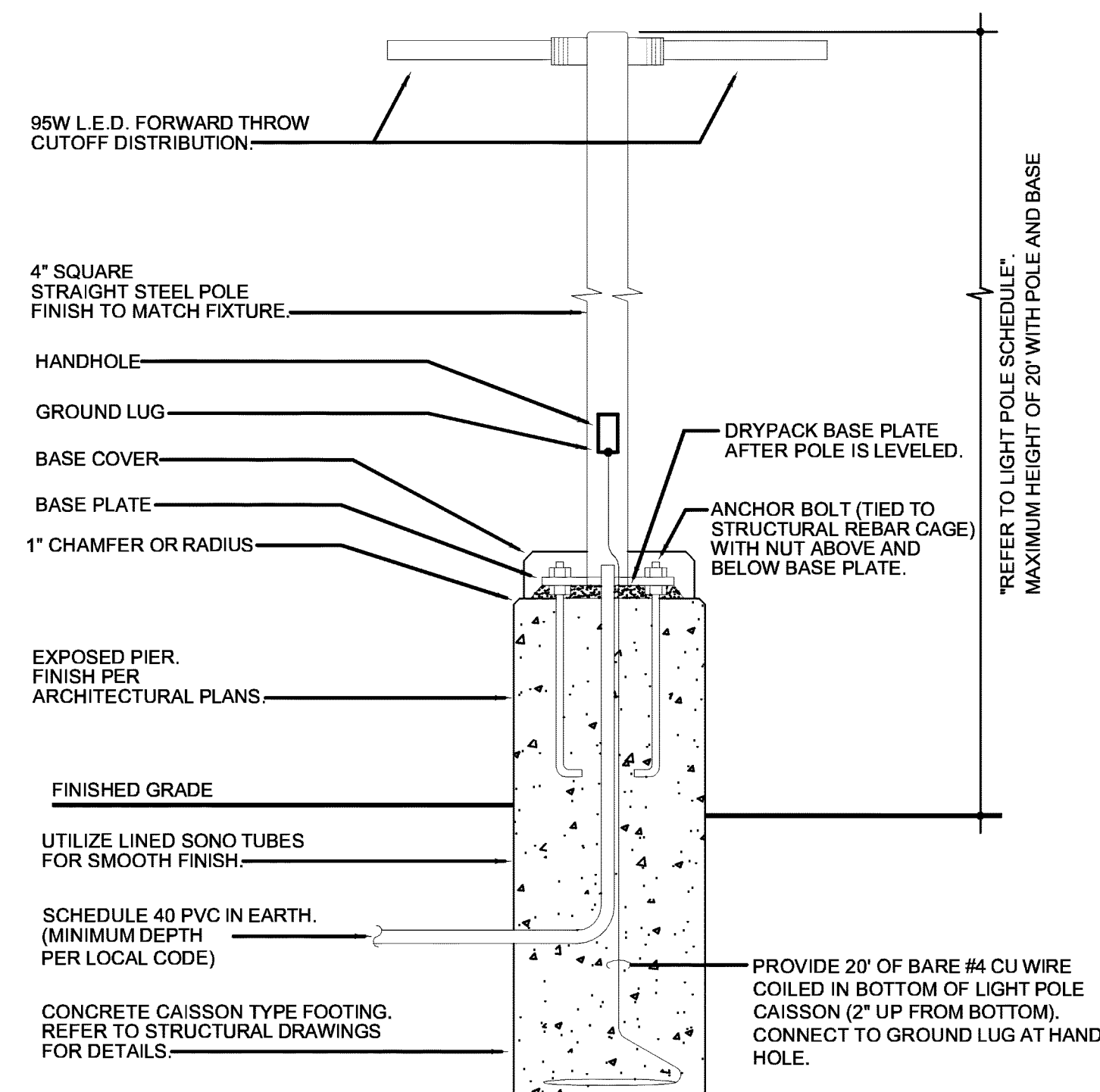
1/4" = 1'-0" E-104

- COORDINATE SERVICE ENTRANCE SECTION, TRANSFORMER, PRIMARY SERVICE, SECONDARY SERVICE, AND SWITCHING CABINET OR POWER POLE LOCATIONS WITH SERVING UTILITY COMPANY AND COMPLY AS REQUIRED.
- CONTRACTOR TO BE RESPONSIBLE FOR COORDINATING AND PROVIDING REQUIRED WORK FOR SUPPLYING ELECTRICAL POWER AND TELEPHONE UTILITIES TO THE BUILDING.
- CONTRACTOR SHALL HAVE ALL EXISTING UNDERGROUND UTILITIES LOCATED PRIOR TO TRENCHING. ALL UNDERGROUND UTILITIES DAMAGED DURING TRENCHING SHALL BE REPAIRED TO THE SATISFACTION OF INVOLVED UTILITY TO CONTRACTOR'S EXPENSE.
- MINIMUM CONDUCTOR SIZE THIS SHEET TO BE #10 CU, 1" CONDUIT.

SITE PLAN GENERAL NOTES	2
	E-105

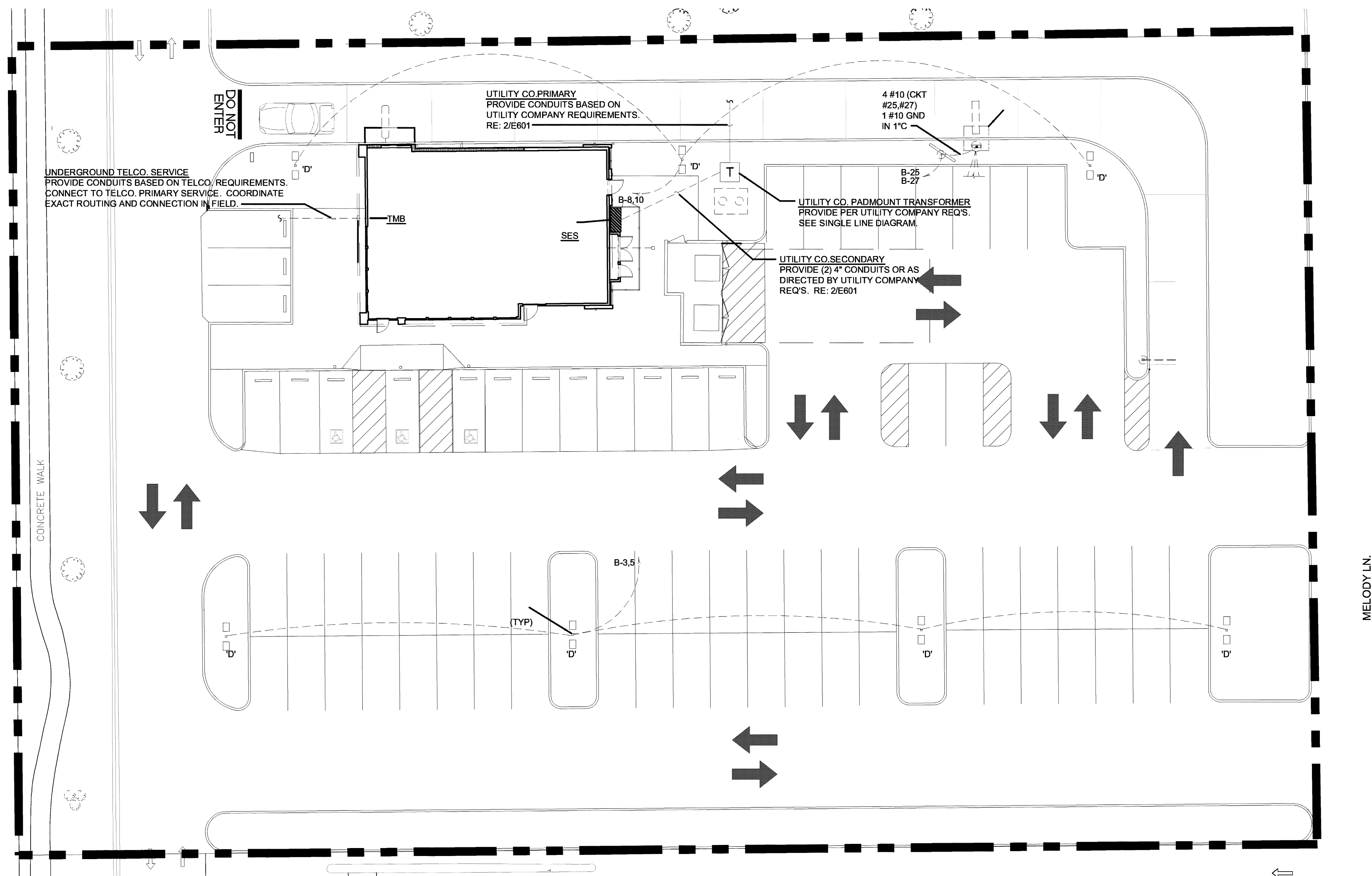
1. FEED THROUGH LIGHTING CONTACTOR. REF: 11E400.
2. STUB UP LOCATION FOR (3) 3/4" CONDUITS & PULL STRINGS, TO ENTER BUILDING & UP TO 6" ABOVE CEILING. REFER TO SHEET 1/E401.
3. STUB-UP LOCATION FOR MENU BOARD. SIGN DISCONNECT PROVIDED BY SIGN CONTRACTOR. COORDINATE PRECISE LOCATION WITH ARCHITECT / OWNER.
4. DRIVE-THRU SENSOR LOOP. COORDINATE LOCATION. REFER TO DETAIL 1 / E401.
5. STUB-UP FOR DRIVE-THRU ORDER CONFIRMATION MONITOR. COORDINATE LOCATION WITH ARCHITECT / OWNER.
6. REF: 1/E400 FOR SES GROUNDING DETAIL.
7. SEE POLE MOUNTING DETAIL, REFER TO 4/E105.
8. CABLE PULL BOX; REFERENCE 1/E100. INSTALL MINIMUM 3' FROM SIDEWALK. DO NOT INSTALL IN SIDEWALK CONCRETE.

SITE PLAN KEYED NOTES	3
	E-105



NOTE: THIS DETAIL IS FOR ELECTRICAL INSTALLATION ONLY. REFER TO STRUCTURAL DRAWINGS FOR MORE INFORMATION.

POLE MOUNTING DETAILS	4
NO SCALE	E-105



SITE & EXTERIOR LIGHTING PLAN	1
1" = 16'-0"	E-105



PANDA EXPRESS, INC.
1683 Walnut Grove Ave.
Rosemead, California
91770
Telephone: 626.799.9898
Facsimile: 626.372.8288

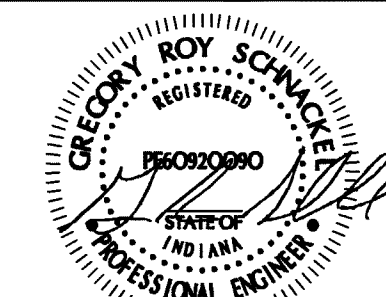
All ideas, designs, arrangement and plans indicated or represented by this drawing are the property of Panda Express Inc. and were created for use on this specific project. None of these ideas, designs, arrangements or plans may be used by or disclosed to any person, firm, or corporation without the written permission of Panda Express Inc.

REVISIONS:

ISSUE DATE:
04/27/21 | WALMART REVIEW
05/05/21 | ISSUE FOR PERMIT

DRAWN BY:

PANDA PROJECT #:	S8-22-D8044
PANDA STORE #:	D8044
ARCH PROJECT #:	Q511070001



Date: 05/05/21

05-05-21



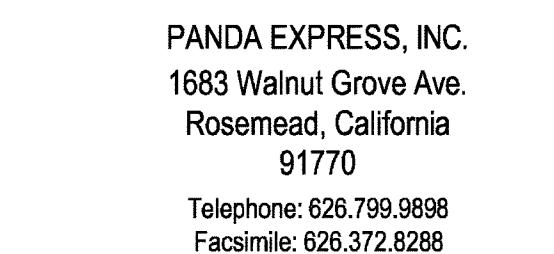
PANDA EXPRESS

TRUE WARM & WELCOME
STATE ST. & NEW RD.
GREENFIELD, IN 46140

E-105

SITE & EXTERIOR LIGHTING PLAN

TRUE WARM & WELCOME 2300 R5



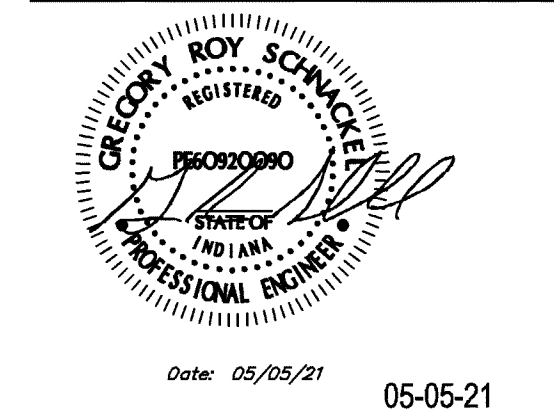
All ideas, designs, arrangement and plans indicated and represented by this drawing are the property of Panda Express Inc. and were created for use on this specific product. None of these ideas, designs, arrangements or plans may be used by or disclosed to any person, firm, or corporation without the written permission of Panda Express Inc.

REVISIONS:

[illegible]

DRAWN BY:

PANDA PROJECT #:	S8-22-D8044
PANDA STORE #:	D8044
ARCH PROJECT #:	Q511070001



PANDA EXPRESS
TRUE WARM & WELCOME
STATE ST. & NEW RD.
GREENFIELD, IN 46140

E-106

HOT - MEDIUM
SITE PHOTOMETRIC PLAN

TRUE WARM & WELCOME 2300 R5

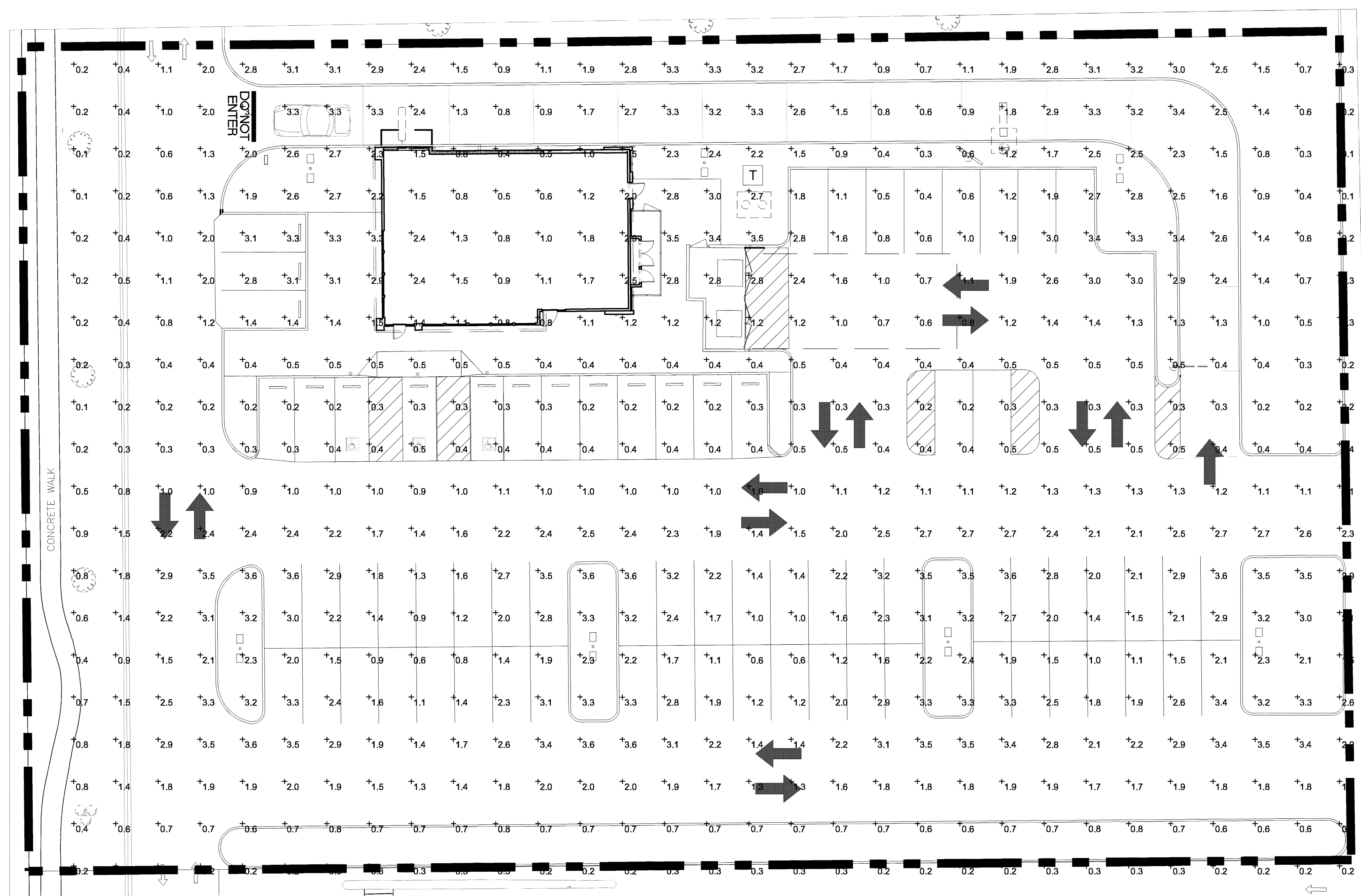
LUMINAIRE SCHEDULE									
Symbol	Label	Qty	Catalog Number	Description	Lamp	File	Lumens	LLF	Watts
<div> <div></div> <div></div> </div>	D	7	SIM-LED-12L-SIL-FT-40-70CRH-IL	CONTACT RYAN ZINSELMIEIER-314-531-2800		SIM-LED-12L-SIL-FT-40-70CRH-ILies	12,000	0.90	170

STATISTICS						
Description	Symbol	Avg	Max	Min	Max/Min	Avg/Min
Parking lot	+	1.5 fc	3.6 fc	0.1 fc	36.0:1	15.0:1

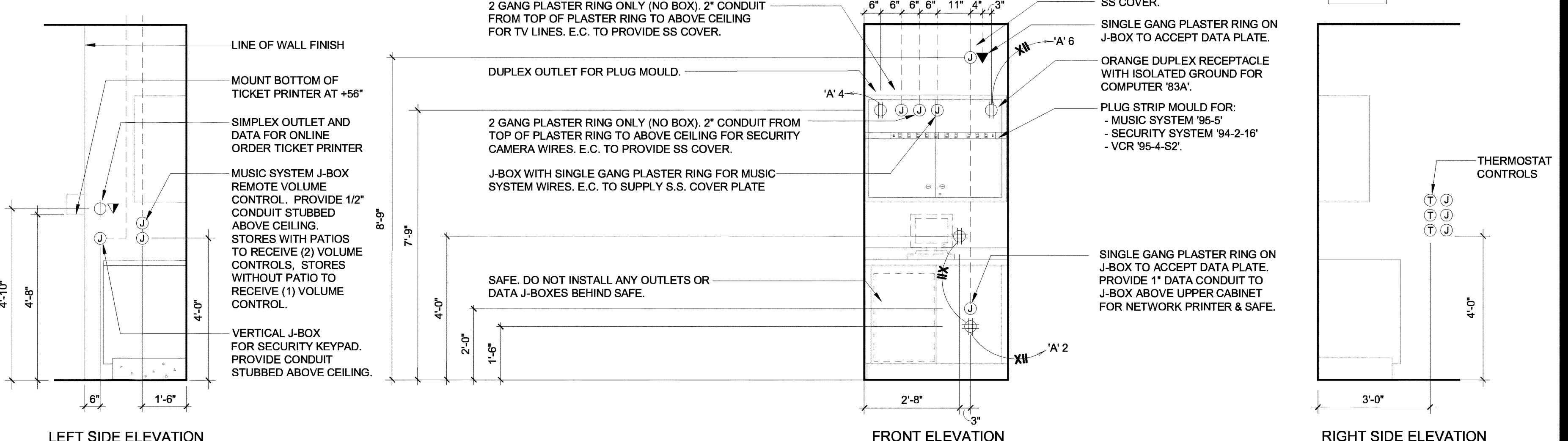
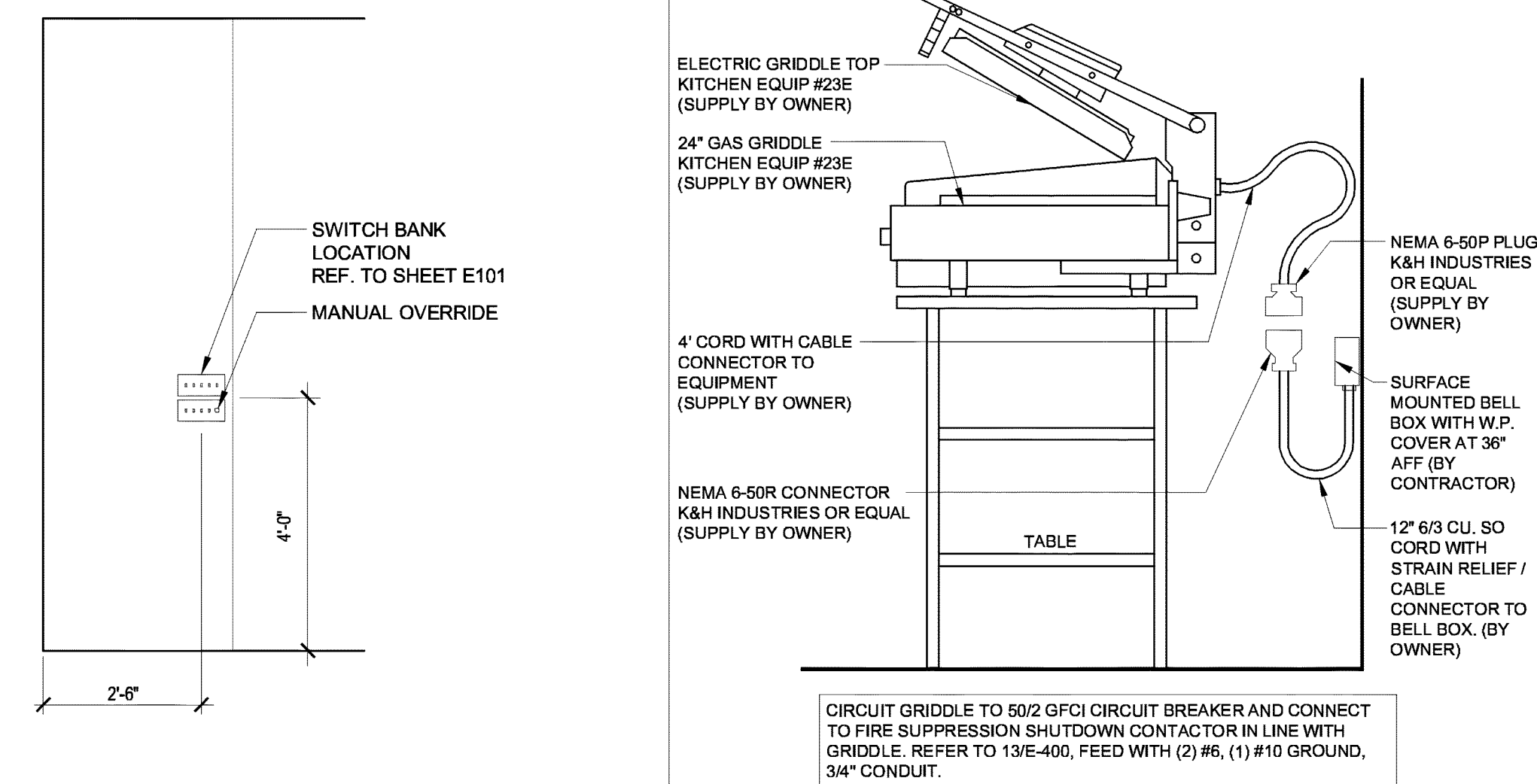
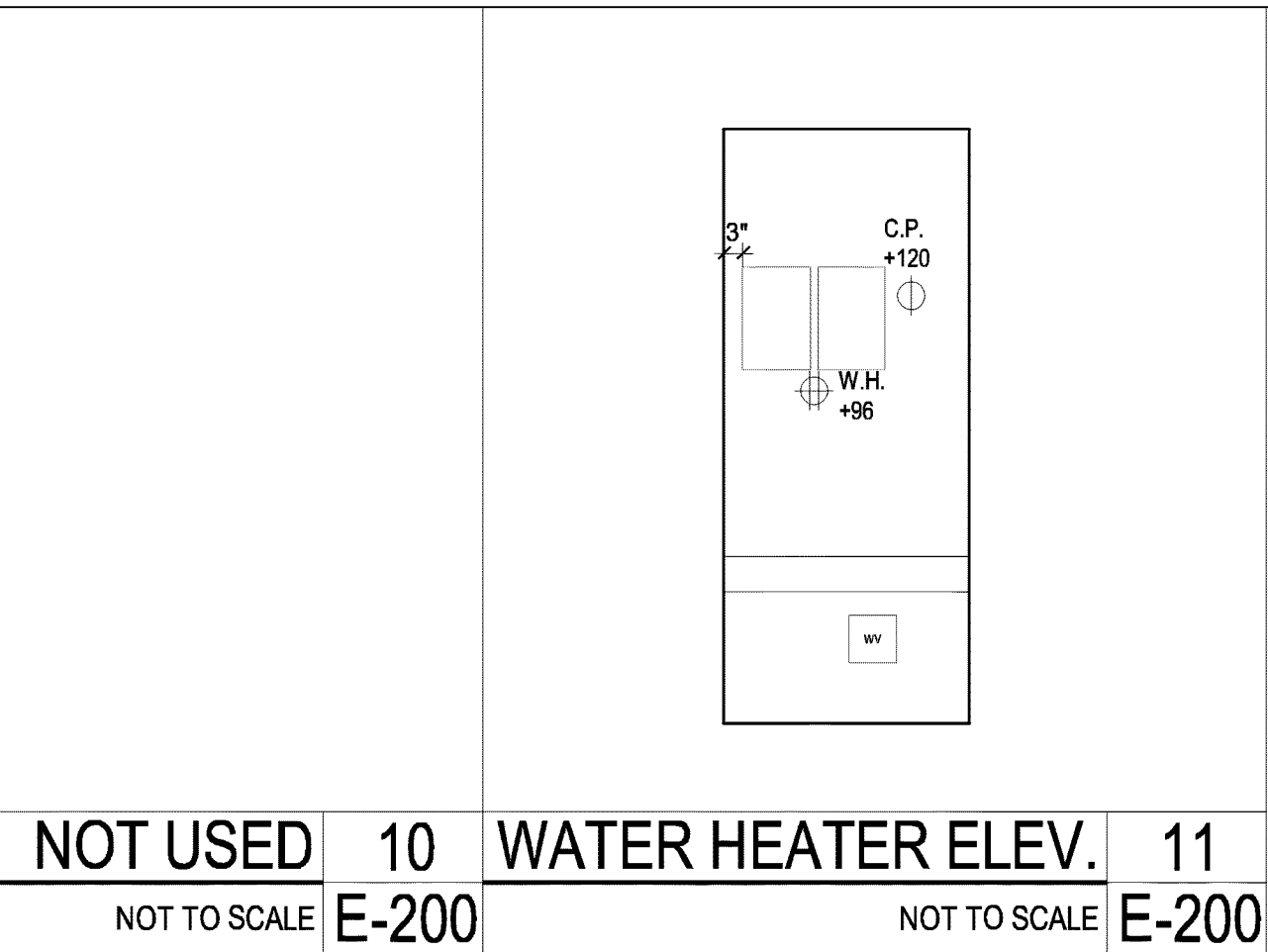
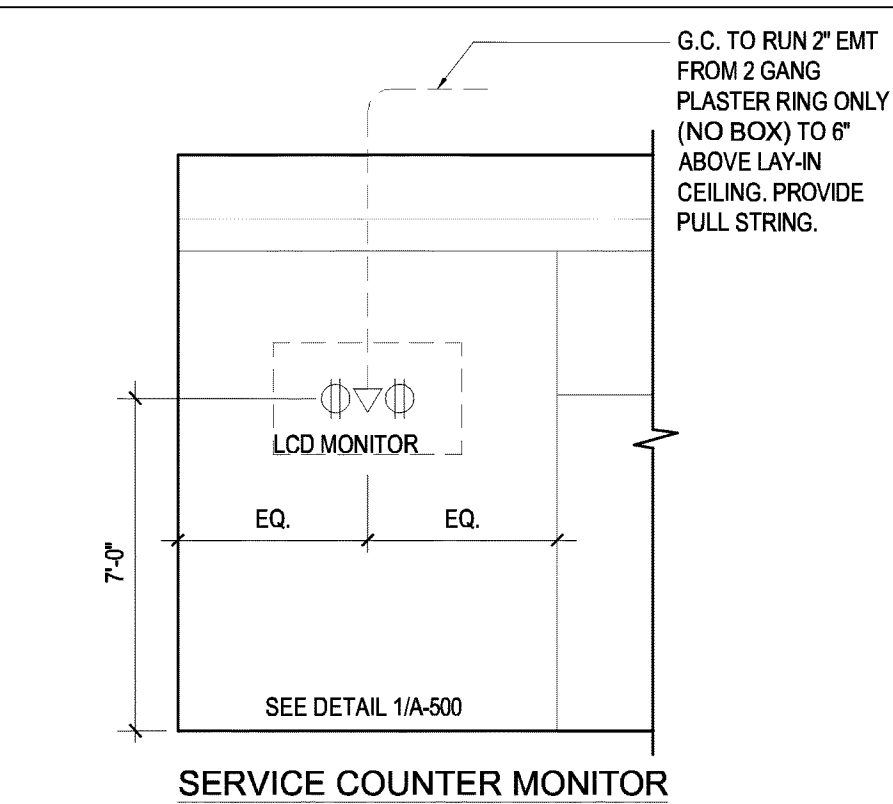
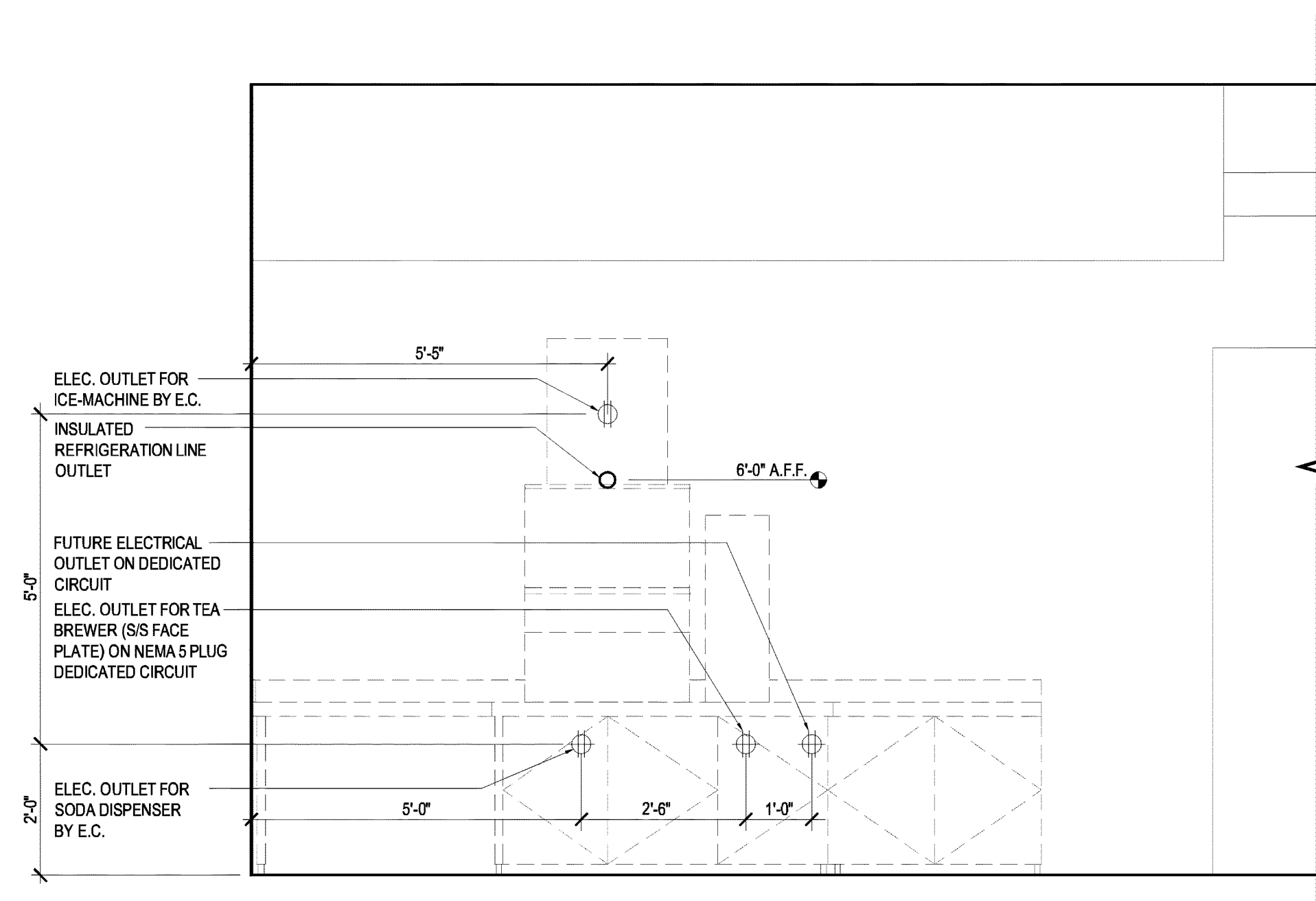
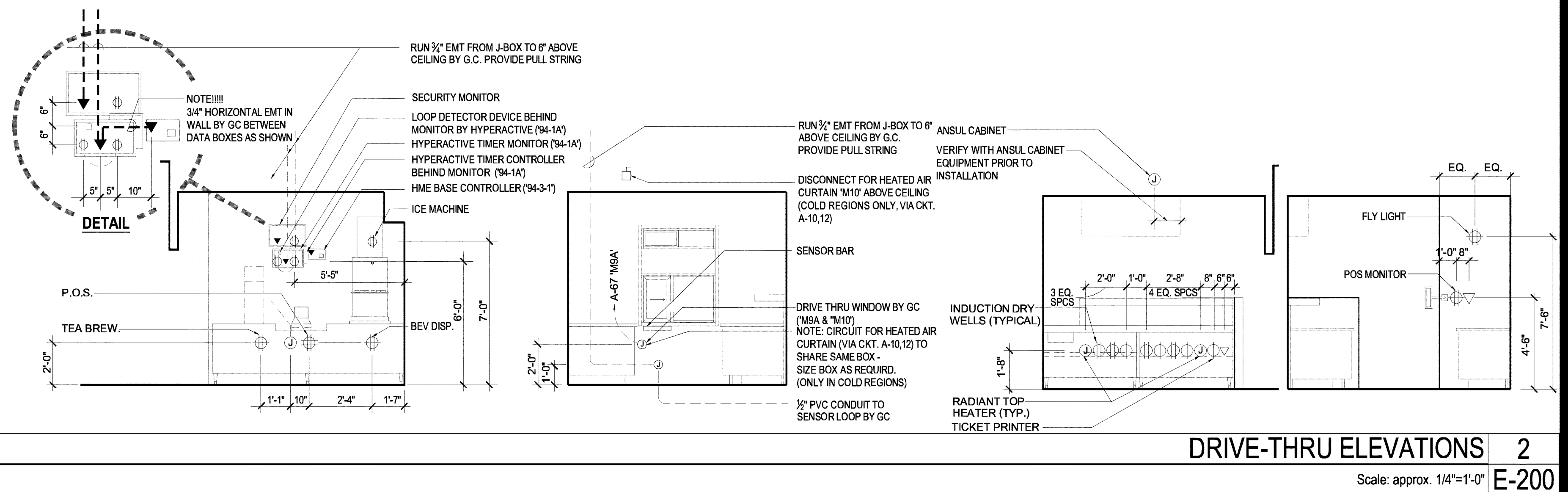
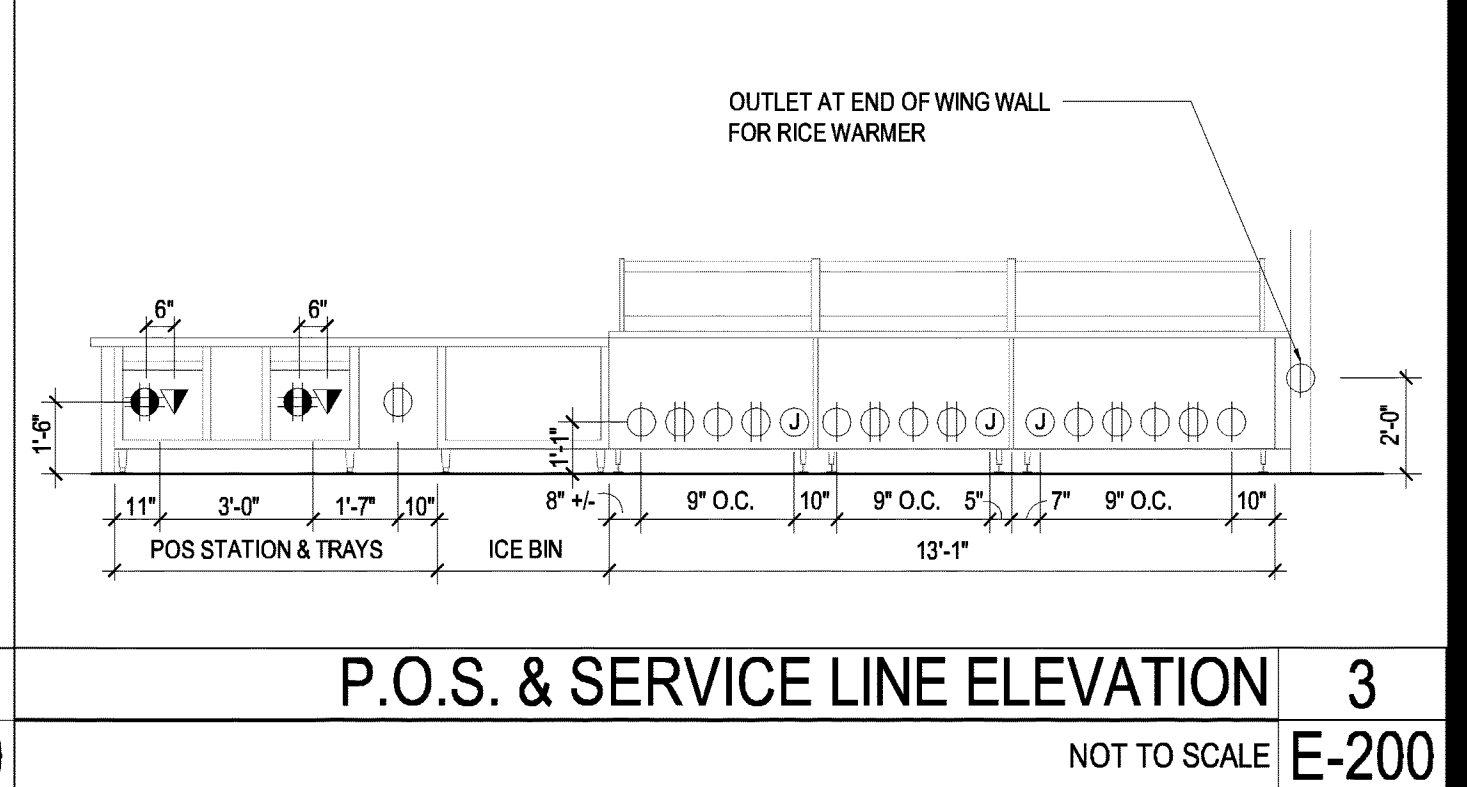
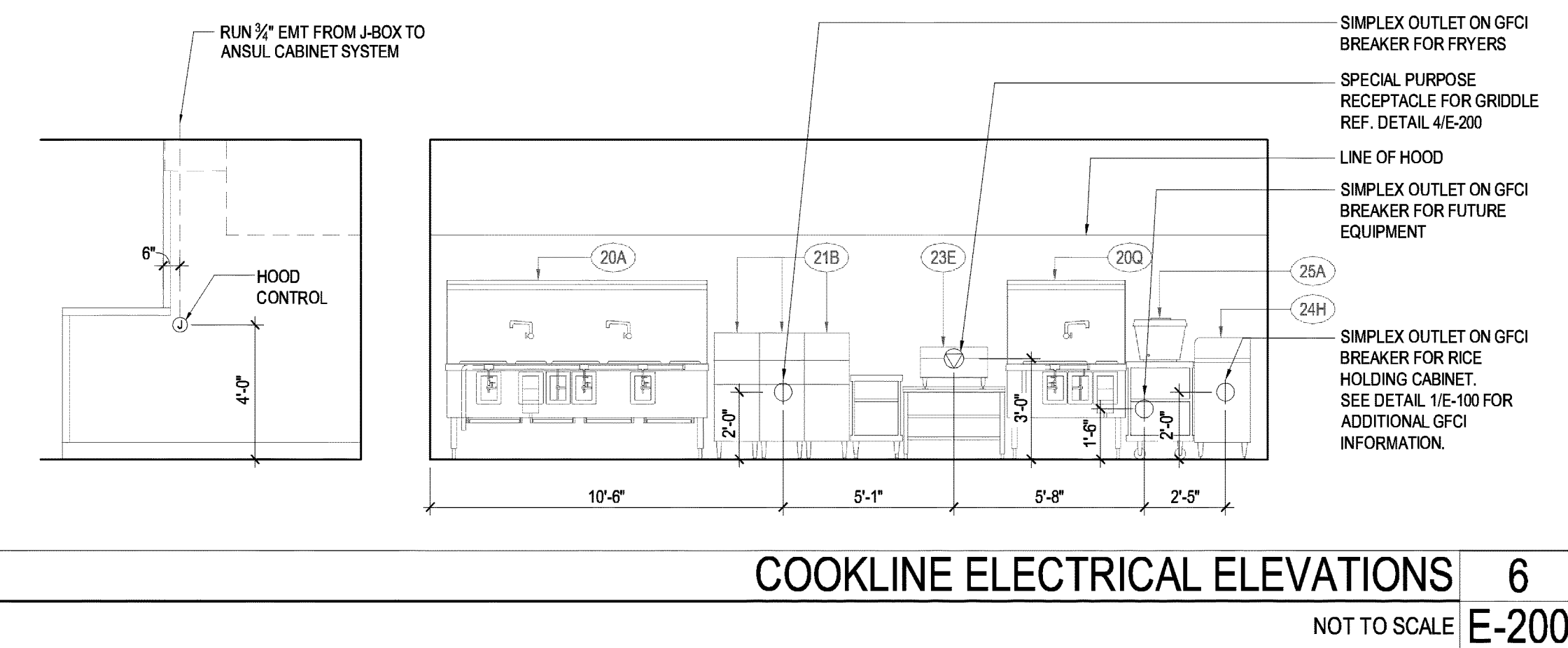
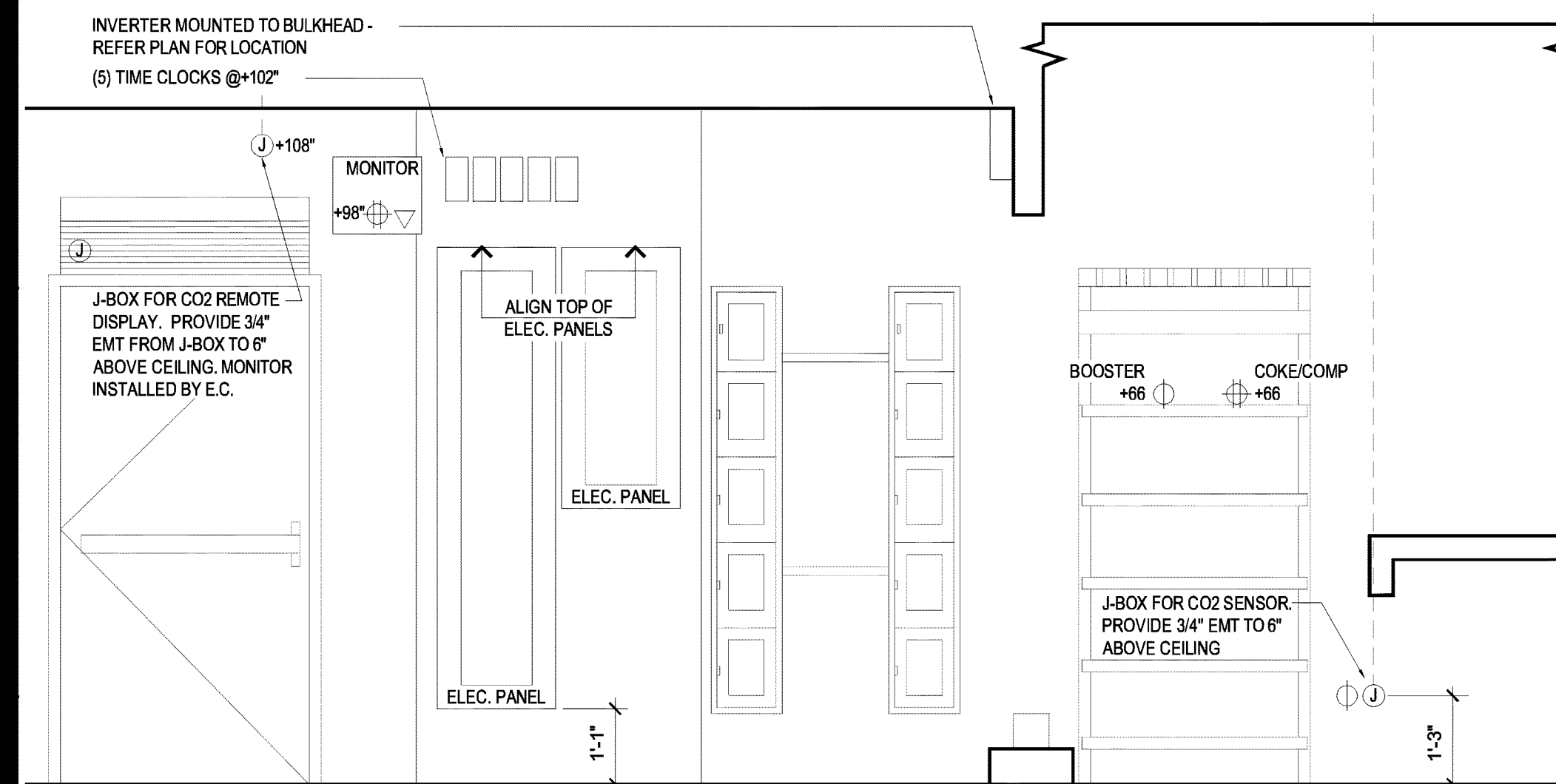
NOTE:

1. MOUNTING HEIGHT OF 20' (POLE AND BASE)
2. CALCULATIONS TAKEN AT GROUND LEVEL.
3. CONTACT VILLA LIGHTING - RYAN ZINSELMEIER- RYAN.ZINSELMEIER@VILLALIGHTING.COM 314.531.2600

SITE LIGHTING FIXTURE SCHEDULE			3	PANDA SITE LIGHTING DESIGN CRITERIA			2
		E-106		NO SCALE			E-106



SITE PHOTOMETRIC PLAN	1
N.T.S.	E-106



ANDA EXPRESS, INC.
683 Walnut Grove Ave.
Rosemead, California
91770
Telephone: 626.799.9898
Facsimile: 626.372.8288

All ideas, designs, arrangement and plans indicated or represented by this drawing are the property of Panda Express Inc. and were created for use on this specific project. None of these ideas, designs, arrangements or plans may be used by or disclosed to any person, firm, or corporation without the written permission of Panda Express Inc.

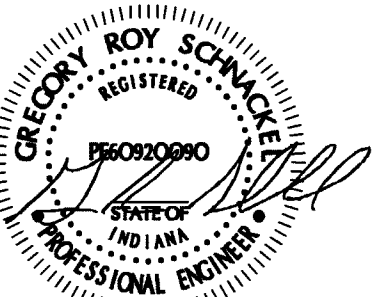
REVISIONS:

ISSUE DATE

7/21	WALMART REVIEW
5/21	ISSUE FOR PERMIT

DRAWN BY:

PANDA PROJECT #:	S8-22-D8044
PANDA STORE #:	D8044
ARCH PROJECT #:	Q511070001



05-05-21



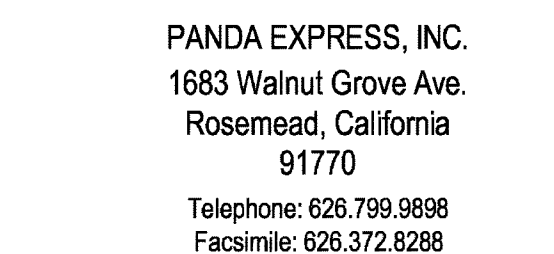
PANDA EXPRESS

RUE WARM & WELCOME
STATE ST. & NEW RD.
GREENFIELD, IN 46140

E-200

ELECTRICAL ELEVATIONS

TRUE WARM & WELCOME 2300 R5



REVISIONS:

DRAWN BY:

Schnackel
engineers,

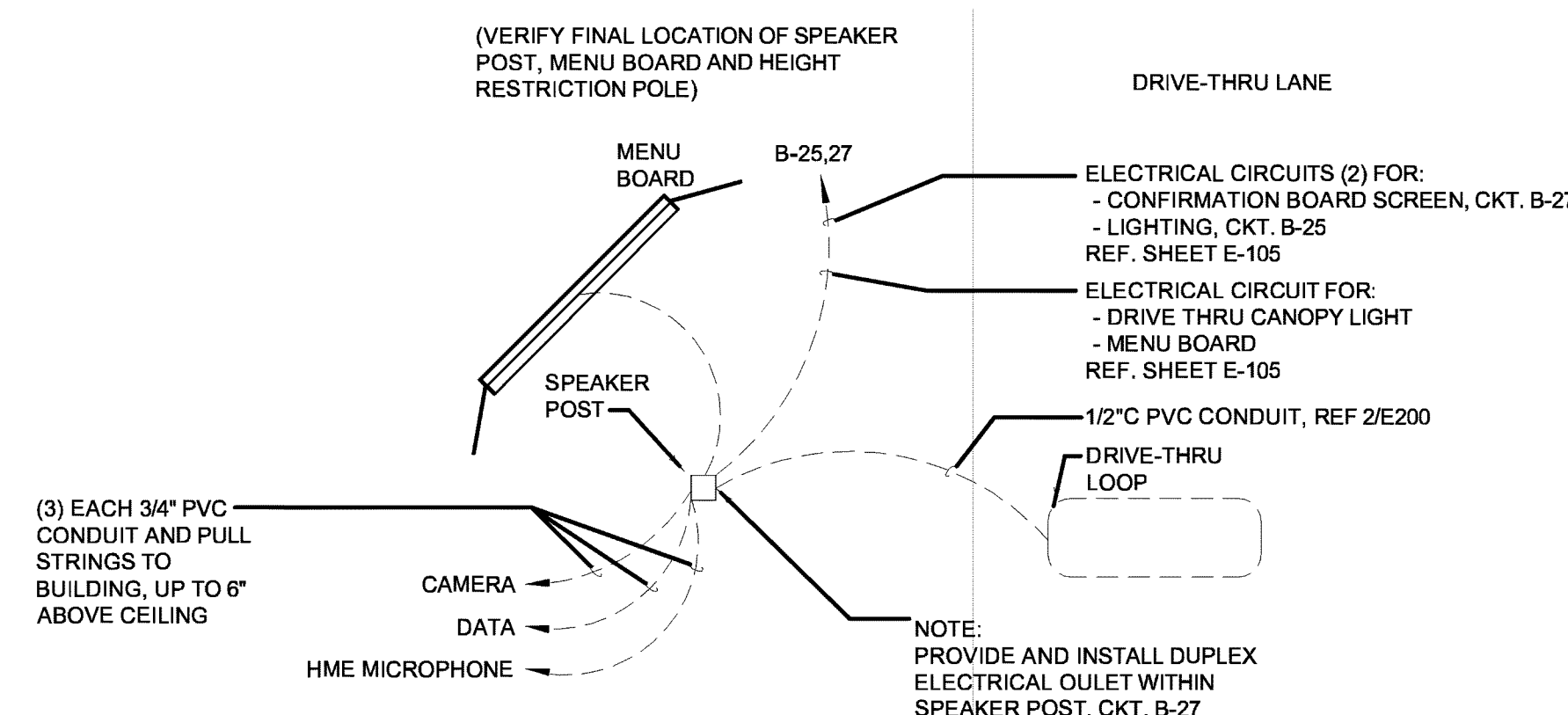
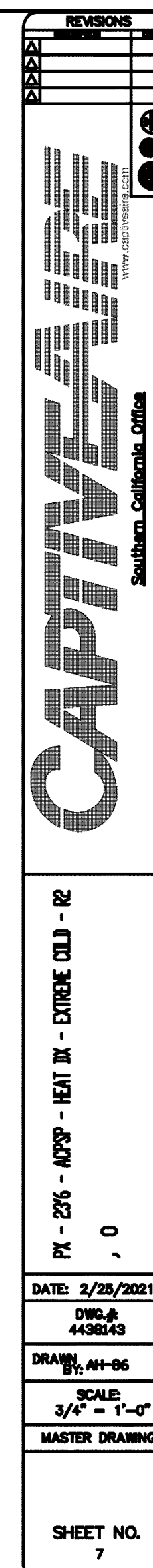
New York ■ Omaha ■ Los Angeles ■ Seattle ■ Honolulu

800-581-0963 www.schnackel.com

© 2006 The Authors

ELECTRICAL DETAILS, DIAGRAMS

TRUE WARM & WELCOME 2300 R5



MENU BOARD & SENSOR LOOP	1
	E-401

- (1) KITCHEN EQUIPMENT SHOWN AT 65% IN PANEL TOTALS PER NEC (KITCHEN EQUIPMENT).
- (2) TERMINATE GROUND ON ISOLATED GROUND BUS.
- (3) ROUTE CIRCUIT THROUGH LIGHTING CONTACTOR, CONTROLLED BY TIMECLOCK. REFER TO DETAILS, SHEET 11/E-400.
- (4) WIRE SIZE INCREASE DUE TO VOLTAGE DROP. SIZE EQUIPMENT GROUND CONDUCTOR PROPORTIONALLY PER NEC.
- (5) REFER TO ONE-LINE DIAGRAM FOR WIRE SIZES.
- (6) GFCI BREAKER
- (7) INSTALL LOCKING DEVICE (LOCK-OFF FOR MAINTENANCE).

PNL A	PANELBOARD	
MOUNTING: FLUSH	(NEW)	208Y/120V, 3PH, 4W
LOCATION: ELEC. CABINET		400A M.L.O.
TYPE: BOLT ON W/ROUND BUS	INTERIOR PANELBOARDS SHALL BE RECESSED WITH FLANGED/REMOVABLE SCREW-ON COVER. SURFACE MOUNTED PANELBOARDS OR HINGED/FLUSH COVERS NOT ALLOWED	SERIES RATED 65/10K A.I.C.
NEMA RATING: 1		GROUND BUS
		ISOLATED GROUND

DESCRIPTION				WIRE	BRKR	PL	KVA						PL	BRKR	WIRE	DESCRIPTION			
							A		B		C								
1	WIC DISPOSEL LTS/MENUBRD/LED			12	20	1	0.33	1.00					1	20	12	FAX '87', MGR '84C', COMP '49A'	2		
3	HOOD CONTL PNL 'M4'			12	20	1	0.50		0.60					1	20	12	MUSIC, VCR, MONITOR	4	
5	SERVICE POS 94, PTR '86A'(2,6)			12	20	1					1.10	0.50	1	20	12	COMPUTER RECEPT '83A' (2)	6		
7	D.THERU POS '94'/PTRS '86A'(2,6)			12	20	1	1.10	0.13					1	20	12	10J ICE MACHINE (6)	8		
9	95-4-53', FLY LT.CO2 (1,6)			12	20	1	0.82		1.41					2	20	12	CHF-25 'M10' AIR CURTAIN	10	
11	RICE WARMER '54A' (1,4,6)			12	20	1			0.11		1.41						12		
13	REF. PREP TABLE '340' (1,6)			12	20	1	1.80	1.18					1	20	12	REAR DOOR - FLY FAN 'M8A'	14		
15	REF. PREP TABLE '340' (1,6)			12	20	1	1.08		0.10					1	20	12	FIRE SUPPRES SHUTDOWN	16	
17	UNDER CTR FRZR '30L' (1,4,6)			10	20	1					1.08							18	
19	BEVERAGE DISP.'4AB'(1)			12	20	1	1.12	1.30					1	20	10	INDUCT WELL 3F, 3G (1,4,6)	20		
21	SERVING COUNTER			12	20	1	0.10		1.30					1	20	10	INDUCT WELL 3F, 3G (1,4,6)	22	
23	ICE TEA BREWER '9D'			12	20	1					1.78	1.30	1	20	10	INDUCT WELL 3F, 3G (1,4,6)	24		
25	FOOD PROCESSOR '53' (6)			12	20	1	1.20	1.30					1	20	10	INDUCT WELL 3F, 3G (1,4,6)	26		
27	SPARE			12	20	1			1.30				1	20	10	INDUCT WELL 3F, 3G (1,4,6)	28		
29	WALK-IN COOLER COIL '31M'(1)			12	20	1					0.24	1.30	1	20	10	INDUCT WELL 3F, 3G (1,4,6)	30		
31	RICE HOLD CAB '24H' (1,4,6)			10	20	1	1.78	1.30					1	20	10	INDUCT WELL 3F, 3G (1,4,6)	32		
33	FUTURE CONTROLS (1,6)			12	20	1	0.20		0.84					1	20	10	INDUCT WELL 3F, 3G (1,4,6)	34	
35	TIMECLOCK			12	20	1					0.01	1.10	1	20	12	RAD TOP HEATER 'IS2B2' (1,7)	36		
37	4B' BOOSTER OUTLET (6)			12	20	1	0.86	1.10					1	20	12	RAD TOP HEATER 'IS2B2' (1,7)	38		
39	HEAT WRAP '32-S7' (4)			12	20	1	0.50		0.84					1	20	12	RAD TOP HEATER 'IS2B1' (1,7)	40	
41	FLY LIGHT (6)			12	20	1					0.18	0.84	1	20	12	RAD TOP HEATER 'IS2B1' (1,7)	42		
43	DUCT DETECTORS			12	20	1	0.20							1	20		SPARE	44	
45	LTG-FOOD PRP/EFJ (4)			10	20	1	1.13		1.50					1	20	12	HEAT TAPE	46	
47	43' GSS DINING AREA			12	20	1					0.25	1.40	2	15	12	MICROWAVE - 55A (1)	48		
49	SHOW WINDOW RECEPS			12	20	1	0.90	1.40											
51	GENERAL RECEPS			12	20	1	0.72		0.18					1	20	12	FUTURE EQUIPMENT	52	
53	EXTERIOR RECEPS			12	20	1			0.36				1	20		SPARE	54		
55	SPARE			12	20	1	1.23							2	20	12	ICE MACHINE COND. '10J-S' (1)	56	
57	10J ICE MACHINE (6)			12	20	1	0.13		1.23									58	
59	GAS WATER HEATER - P3. (6)			12	20	1					0.96	3.33	2	40	8	WALKIN FRZR COND. '32-S1'(1,7)	60		
61	ICE TEA BREWER '9D' (1,4,6)			12	20	1	1.78	3.33					2	35	10	WALK IN COOL COND '31-S' (1)	62		
63	LTG - RESTRMS			12	20	1	0.07		2.81									64	
65	SPARE			12	20	1					2.81								
67	DT WINDOW 'M8A' AIR CURTAIN			12	20	1	0.50	5.52					3	50	6	RTU-3 (LENNOX)	66		
69	INDUC DR WELL 3F,3G (1,4,6)			10	20	1	1.30		5.52									70	
71	INDUC DR WELL 3F,3G (1,4,6)			10	20	1					1.30	5.52						72	
73	ELECTRIC GRIDDOLE - "23C" (1,6)			6	50	2	3.79	5.52					3	50	6	RTU-2 (LENNOX)	74		
75							3.79		5.52									76	
77	SPACE										5.52							78	
79	SPACE						3.84						3	45	6	RTU-1 (LENNOX)	80		
81	INDUC DRY WELL 3F,3G (1,4,6)			10	20	1	1.30		3.84									82	
83	INDUC DRY WELL 3F,3G (1,4,6)			10	20	1					1.30	3.84						84	
PANELBOARD TOTALS CALCULATED							TOTAL	43.49	37.12	37.52	KVA								
PER NEC ARTICLE 220								363	310	313	AMPS								
								118.14	KVA		328	AMPS							
FEEDER LOAD								102.79	KVA		286	AMPS							

PNL B	PANELBOARD	
LOCATION: FLUSH	(NEW)	208Y/120V, 3PH, 4W
MOUNTING: ELEC. CABINET		225A M.L.O.
TYPE: BOLT ON W/GROUND BUS	INTERIOR PANELBOARDS SHALL BE RECESSED WITH FLANGED/REMOVABLE SCREW-ON COVER. SURFACE MOUNTED PANELBOARDS OR HINGED/FLUSH COVERS NOT ALLOWED	SERIES RATED 65/10K A.I.C.
NEMA RATING: 1		GROUND BUS

DESCRIPTION		WIRE	BRKR	PL	KVA				PL	BRKR	WIRE	DESCRIPTION	
					A		B		C				
1	BUILDING SIGN/LOGO (3)	12	20	1	1.00	1.23					2	20	10
3	EXTERIOR POLE MOUNT LTG (3,4)	12	20	2	0.38		1.23					2	4
5								0.38	0.90			1	20
7	TICKET PRINTER (6)	12	20	1	0.22	0.29					2	20	12
9	BEV. DISPENSER 4AB (1,4,6)	10	20	1	1.12		0.29					2	10
11	SECURITY/POS MONITORS (6)	12	20	1				1.23					6
13	HYPERACTIVE TIMER SYS. (6)	12	20	1	0.10							10	12
15	DINING TV'S	12	20	1	0.26								16
17	S.PARE	20	1									14	18
19	COKE CARBONATOR (6)	12	20	1	0.20	2.57					3	30	10
21	S.PARE	20	1				2.57					20	22
23	BUILDING LTG/EM (3)	12	20	1				0.10	2.57			24	26
25	MENUBOARD (3,4)	10	20	1	1.50	0.71					3	15	12
27	DR THRU ORDER SCREEN (4)	10	20	1	1.00		0.71					28	30
29	RTU CONVENIENCE OUTLETS	12	20	1				0.54	0.71			32	38
31	CANOPY LIGHTING (3)	12	20	1	0.13	0.71					3	15	12
33	CANOPY LIGHTING (3)	12	20	1	0.13		0.71					32	34
35	EXTERIOR MOTION SECURITY LED	12	20	1				0.71				36	38
37	CU-1	10	30	3	2.57	2.40					3	30	10
39					2.57		2.40					36	40
41								2.57	2.40			42	42
PANELBOARD TOTALS CALCULATED				TOTAL	13.32		13.78		11.48		KVA		
PER NEC ARTICLE 220				TOTAL LOAD	111		115		96		AMPS		
				FEDERAL LOAD	38.58		KVA		108		AMPS		
					39.77		KVA		111		AMPS		

MOUNTING: SURFACE	(NEW)	600A M.C.B.
LOCATION: OUTSIDE IN NEMA 3R ENCLOSURE		65,000 AIC
		GROUND BUS

DESCRIPTION		WIRE	BRKR	PL	KVA			PL	BRKR	WIRE	DESCRIPTION	
					A	B	C					
1	PANELBOARD "A" (5)		400	3	43.49							2
3						37.12						4
5							37.52					6
7	PANELBOARD "B" (5)		200	3	13.32							8
9						13.78						10
11							11.48					12
13	SPACE											14
15												16
17												18
PANELBOARD TOTALS CALCULATED				TOTAL	56.81	50.90	49.00	KVA				
PER NEC ARTICLE 220					474	425	409	AMPS				
TOTAL LOAD					156.71	KVA	435	AMPS				
FEEDER LOAD					142.56	KVA	396	AMPS				

Total VA per system					
1) General Receptacles — 1st 10,000VA	=	9,364	x	1.00	= 9,364
2) General Receptacles — over 10,000VA	=		x	0.50	
3) Kitchen Equipment	=	46,796	x	0.65	= 30,418
4) Lighting	=	4,551	x	1.25	= 5,689
5) HVAC	=	67,794	x	1.00	= 67,794
6) Refrigeration	=	17,180	x	1.00	= 17,180
7) Continuous	=	4,356	x	1.25	= 5,445
8) Non-Continuous	=	6,672	x	1.00	= 6,672
9) Spare	=		x	1.00	
Total VA per system	=	156,714			142,562
Panelboard voltage	=	360			360
Total Connected Load (amperes)	=	435			
Total Diversified Load (amperes)	=				396

NOT TO SCALE | E-601

NEW SERVICE REQUIRED: 600A, 120/208V, 3 PHASE, 4 WIRE	UTILITY COMPANY: GREENFIELD POWER AND LIGHT
SERVICE TO BUILDING ROUTED: TBD	NAME OF CONTACT: Steven Ostewig
AVAILABLE FAULT CURRENT: TBD	PHONE: (317) 477-4370
METERING LOCATION: EXTERIOR BUILDING	EMAIL: sostewig@greenfieldin.org

ITEMS	CONTRACTOR		UTILITY COMPANY	
	FURNISHED BY	INSTALLED BY	FURNISHED BY	INSTALLED BY
PRIMARY CONDUCTORS			X	X
PRIMARY TERMINATIONS			X	X
PRIMARY CONDUIT(S)				
PRIMARY TRENCH/BACKFILL	X	X		
TRANSFORMER --(CONTRACTOR TO PROVIDE PAD PER/UTILITY REQ'S)			X	X
SECONDARY CONDUCTORS (FROM XFMR TO UTILITY METER)	X	X		
SECONDARY TERMINATIONS @ TRANSFORMER (GC PROVIDE LUGS)			X	X
SECONDARY TERMINATIONS @ SERVICE ENTRANCE	X	X		
SECONDARY CONDUIT	X	X		
SECONDARY TRENCH/BACKFILL	X	X		
METERING CT'S - TO BE DETERMINED BY UTILITY			X	X
METER HOUSING - PROVIDED BY UTILITY TO CONTRACTOR AT NO CHARGE	X	X		

CONTRACTOR NOTE:

1. CONTRACTOR TO FIELD VERIFY AND COORDINATE THEIR RESPONSIBILITIES FOR ELECTRICAL SERVICE ENTRANCE WITH ELECTRICAL SERVICE PROVIDER; AND PROVIDE BID WITH ALL ASSOCIATED COSTS WITH NO ADDITIONAL COST TO OWNER.

DESIGNER NOTE:

1. ENGINEER/DESIGNER TO MODIFY ELECTRICAL COORDINATION FORM AS PER THEIR CONVERSATION WITH UTILITY PROVIDER

NOT TO SCALE | E-601

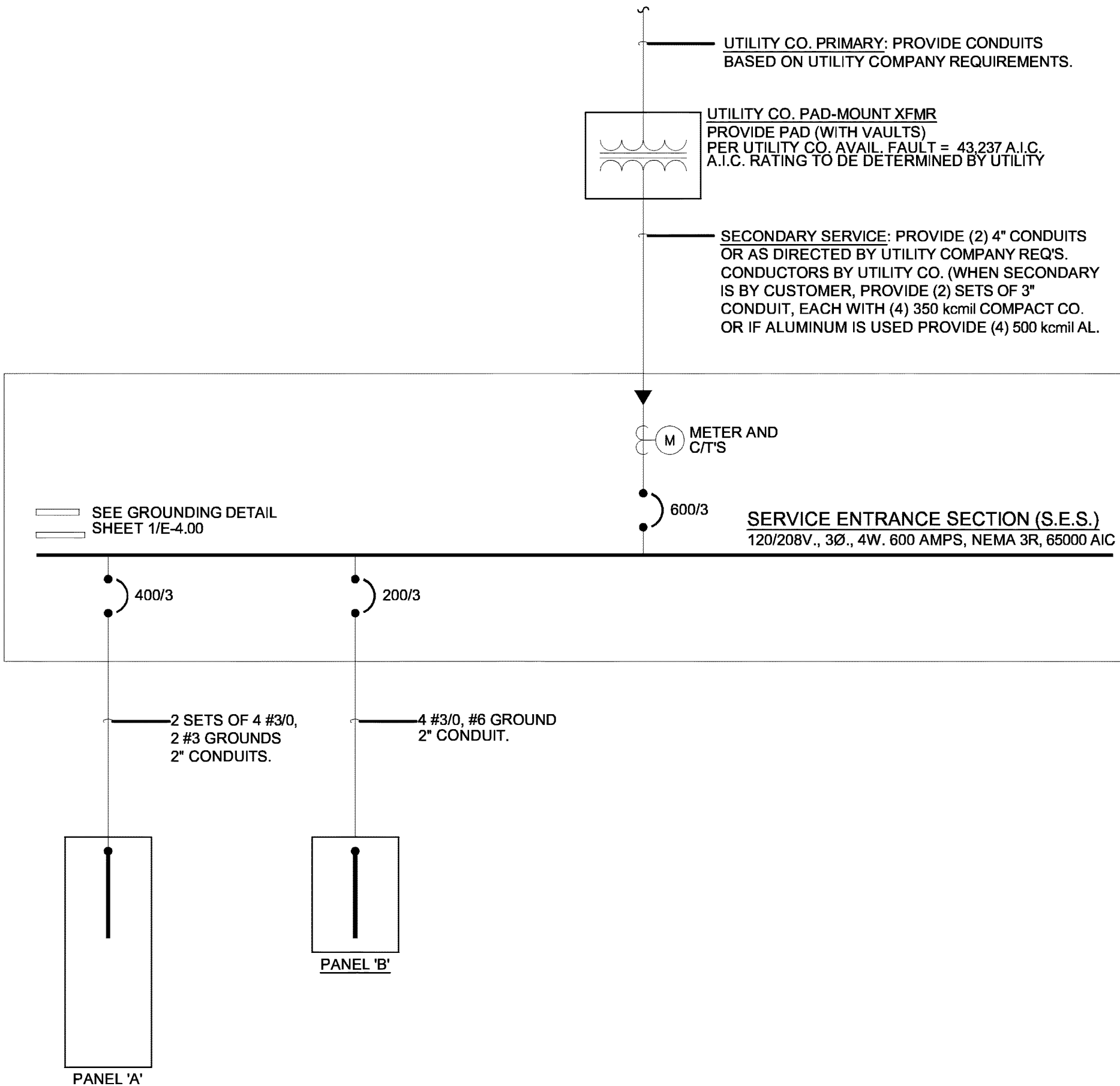
NOT TO SCALE | E-601

1. UNLESS NOTED, ALL DEVICES AND TERMINATIONS 100 AMPS AND LESS TO BE RATED FOR 80°C WIRE, OVER 100 AMPS, 75°C WIRE.
2. CONTRACTOR TO SUBMIT SERVICE ENTRANCE GEAR SHOP DRAWINGS TO SERVING UTILITY COMPANY FOR APPROVAL.
3. ALL WIRE #8 AND SMALLER TO BE THW/NTHHN CU.; #6 AND LARGER TO BE XHHW CU.
4. THE DESIGN PROFESSIONAL HAS PERFORMED ALL REQUIRED LOAD CALCULATIONS AND VERIFIES THAT ALL UPSTREAM PANELS AND EQUIPMENT ARE NOT OVERLOADED.
5. E. C. SHALL PROVIDE GROUNDING PER NEC ARTICLE 250, RE: 1/E400 FOR ADDITIONAL INFORMATION.

NOT TO SCALE | E-601

1. ENTIRE INSTALLATION TO COMPLY WITH N.E.C. 110.22 AND 240.86(B).
2. NO DESIGN CHANGES MAY BE MADE TO THE SYSTEM WITHOUT THE PRIOR APPROVAL OF THE DESIGN ELECTRICAL ENGINEER AND THE ELECTRICAL INSPECTOR.
3. A TWO TIER 65000/10000 AIC SERIES RATING SYSTEM IS SPECIFIED BETWEEN THE SEES MAIN FUSES AND THE PANEL BRANCH CIRCUIT BREAKERS, NO SUBSTITUTIONS - UNLESS A FULLY RATED SYSTEM IS PROVIDED.
4. MOTOR CONTRIBUTION TO THE FAULT CURRENT IS LESS THAN 1% OF THE INTERRUPTING RATING OF THE DOWNSTREAM CIRCUIT BREAKER(S).
5. THE ELECTRICAL CONTRACTOR SHALL PROVIDE LABELS AT ALL COMPONENTS OF THE SERIES PROTECTED SYSTEM: AT PANEL 'A' STATING "CAUTION - 65/10 SERIES COMBINATION SYSTEM RATED 21,572 AMPERES. IDENTIFIED REPLACEMENT COMPONENTS REQUIRED", AT PANEL 'B' STATING "CAUTION - 65/10 SERIES COMBINATION SYSTEM RATED 20,985 AMPERES. IDENTIFIED REPLACEMENT COMPONENTS REQUIRED". IDENTIFIED REPLACEMENT COMPONENTS REQUIRED"
6. EQUIPMENT SUPPLIER TO PROVIDE CUT SHEETS OF ALL SERIES RATED COMPONENTS (I.E. FUSES, CIRCUIT BREAKERS) HI-LIGHTING EACH ITEM AND THE SPECIFIC LISTING/TESTING OF EACH ITEM'S SERIES RATING WITH THE OTHER.
7. POST THIS INFORMATION ON THE JOB-SITE WITH PERMIT FOR CITY ELECTRICAL INSPECTOR'S REVIEW/APPROVAL.

NOT TO SCALE | E-601



PANDA EXPRESS, INC.
1683 Walnut Grove Ave.
Rosemead, California
91770
Telephone: 626.799.9898
Facsimile: 626.372.8288

All ideas, designs, arrangement and plans indicated or represented by this drawing are the property of Panda Express Inc. and were created for use on this specific project. None of these ideas, designs, arrangements or plans may be used by or disclosed to any person, firm, or corporation without the written permission of Panda Express Inc.

REVISIONS:

ISSUE DATE:

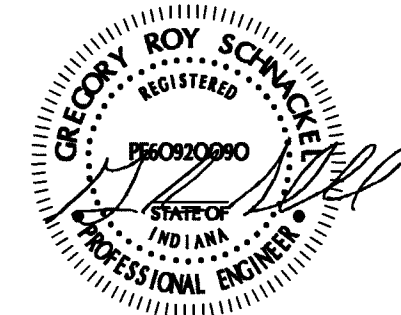
04/27/21	WALMART REVIEW
05/05/21	ISSUE FOR PERMIT

DRAWN BY:

PANDA PROJECT #: S8-22-D8044

PANDA STORE #: D8044

ARCH PROJECT #: Q511070001



Date: 05/05/2018

05-05-21



TRUE WARM & WELCOME
STATE ST. & NEW RD.
GREENFIELD, IN 46140

E-601

PANELS, SINGLE LINE, LOAD CALC'S

TRUE WARM & WELCOME 2300 R5