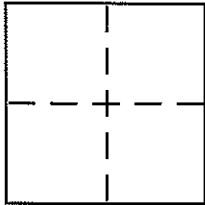


CORNER RECORD

Bk 33 Pg 53
Document Number CR 3774
City of BERKELEY County of ALAMEDA, California

Brief Legal Description CITY MONUMENT B0469



CORNER TYPE

Government Corner ☐ Control ☒
Meander ☐ Property ☐
Rancho ☐ Other ☐
Date of Survey 6-4-2009

COORDINATES (Optional)

N. _____
E. _____
Zone _____ NAD27 ☐ NAD83 ☐
NAD83 Epoch _____
Elev. _____
Vert. Datum: NGVD29 ☐ NAVD88 ☐
Meas. Units: Metric ☐ Imperial ☐

Corner - Left as found ☒ Found and tagged ☐ Established ☐ Reestablished ☐ Rebuilt ☐

Identification and type of corner found: Evidence used to identify or procedure used to establish or reestablish the corner:

MONUMENT REFERENCES

A description of the physical condition of the monument as found and as set or reset: SEE PAGE 2

SURVEYOR'S STATEMENT

This Corner Record was prepared by me or under my direction in conformance with the Land Surveyor's Act on June 4, 2009

Signed [Signature] P.L.S. or R.C.E. No. PLS 5003

COUNTY SURVEYOR'S STATEMENT

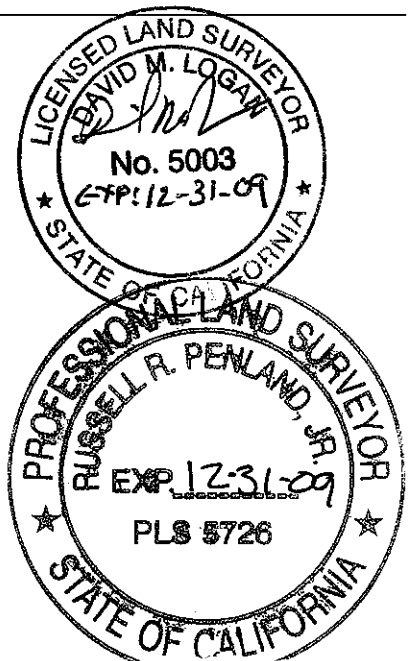
This Corner Record was received 6-29-09

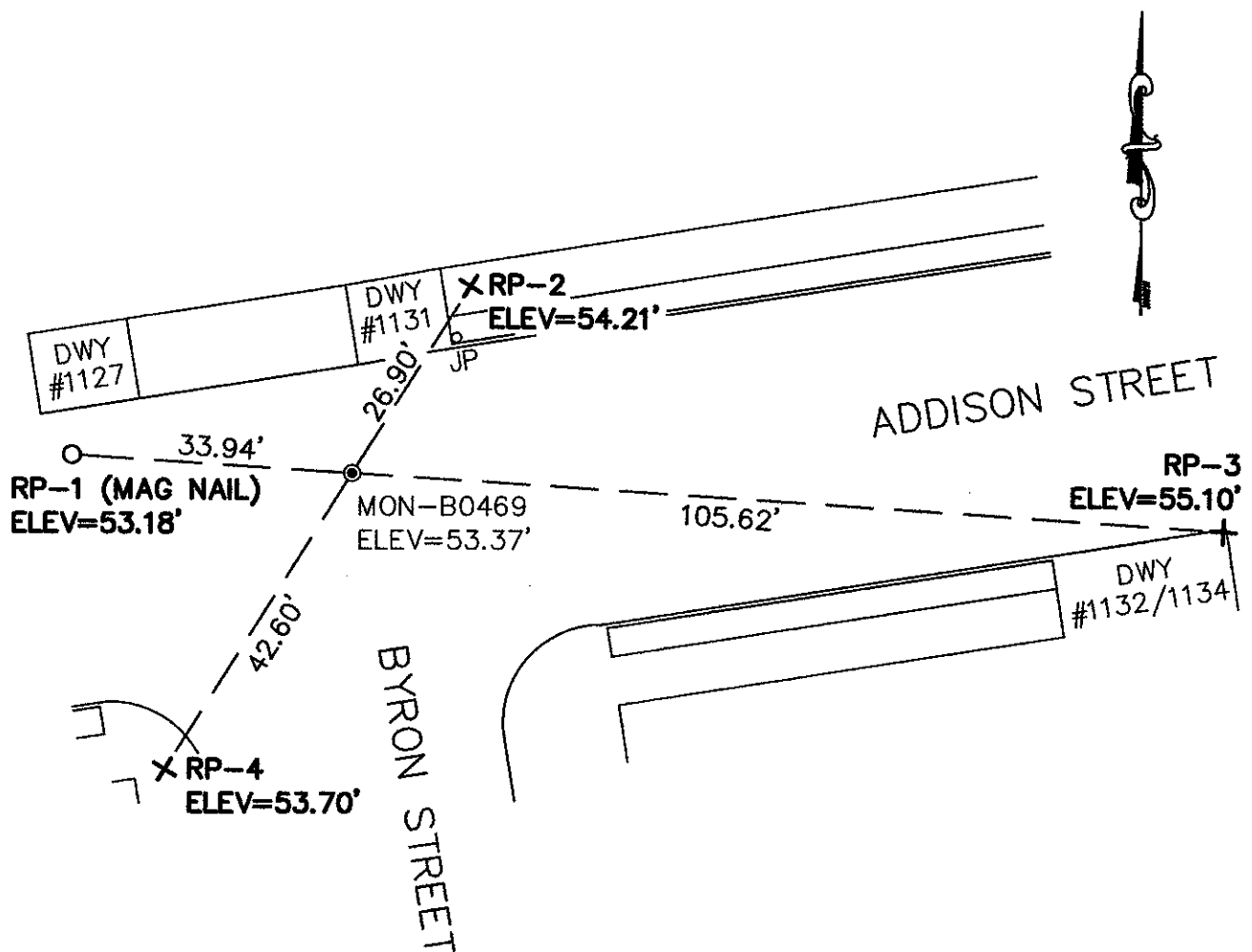
and examined and filed 7-26-09

Signed [Signature] P.L.S. or R.C.E. No. 5726

Title COUNTY SURVEYOR

County Surveyor's Comment _____





LEGEND

- ⊙ STANDARD WELL-TYPE CITY MONUMENT WITH 1/4" BRASS PIN.
- ⊕ REFERENCE CROSS ON SIDEWALK
- REFERENCE NAIL IN ASPHALTIC CONCRETE

NOTE:

THE EXISTING MONUMENT AS SHOWN IS REFERENCED BY STRAIGHT LINES BETWEEN RP-1 TO RP-3 AND RP-2 TO RP-4.