

## A4 Editor Setup Guide

### ***Preparation:***

Make sure your A4 OS is latest.

### ***A4 setting :***

This patch is using NRPN for controlling A4.

So you need to set your A4 as described below.

go to global menu [Function + Global]

enter the [MIDI PORT CONFIG]

set [OUTPUT CH] = [TRK CH]

set [PARAM OUTPUT] = [NRPN]

set [RECEIVE CC/NRPN] = ON

### ***MaxMsp setting:***

First close your all apps and turn off your A4.

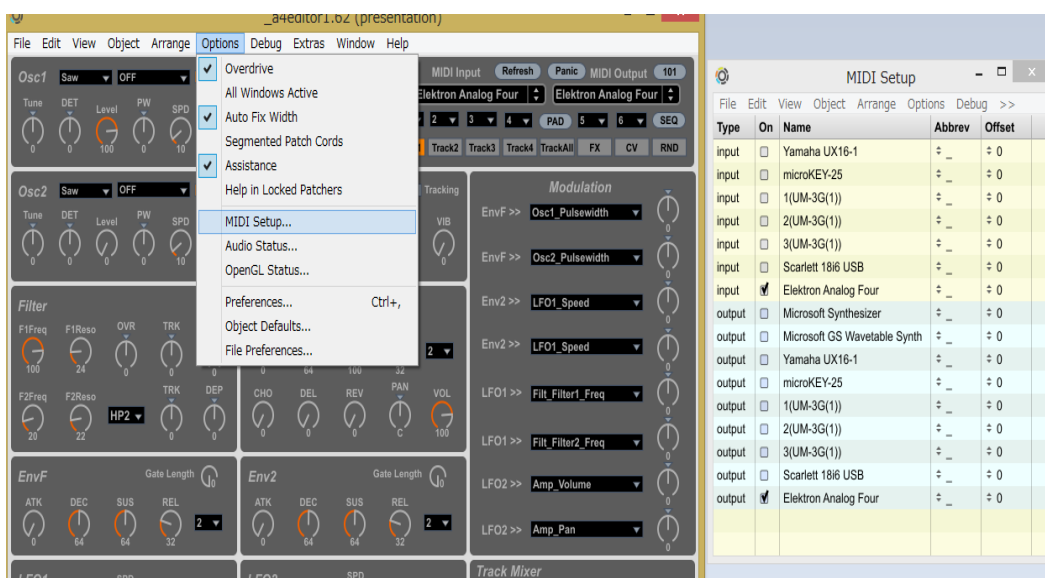
1: turn on your A4

2: open “\_a4editor1.61”(standalone version)



This window will show up.

So click option tab on Max menu and enter MIDI setup...



And uncheck all MIDI IN/OUT port except Elektron Analog Four.

Then close MIDI Setup window.

3: hit the refresh button in the editor

set the MIDI IN/OUT port to Elektron Analog Four and also set MIDI channel

4: tweak F1Freq knob in the editor and check your A4 screen.

If A4 screen is syncing with editor knob,connection(editor to A4) is OK.

5: tweak your A4's knob and check the editor screen.

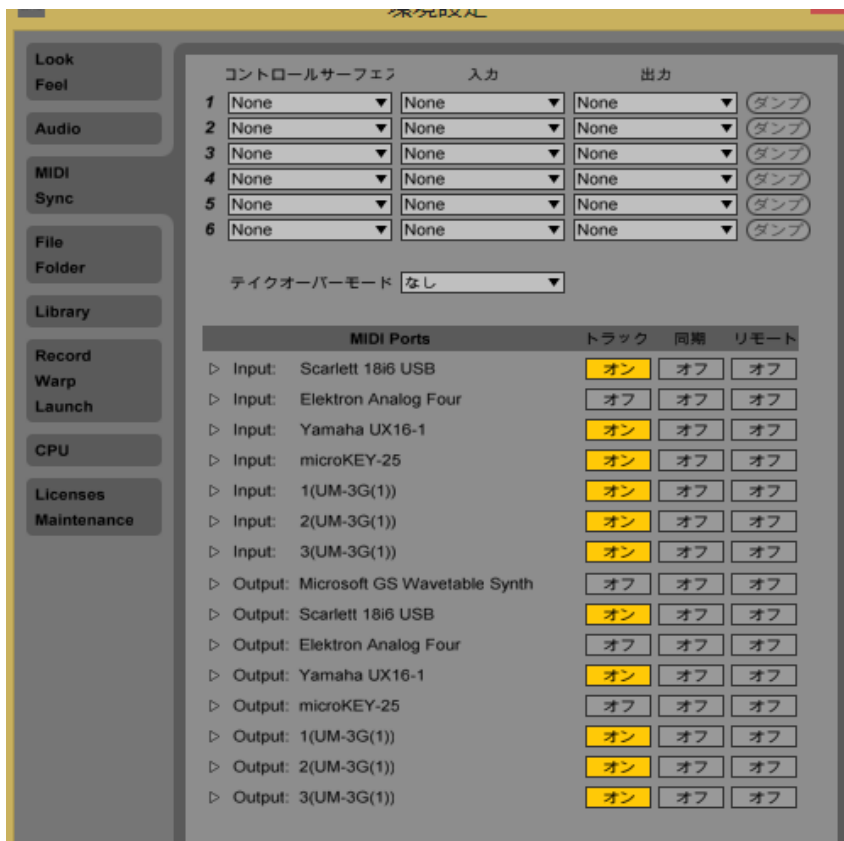
If editor screen is syncing with A4's knob,connection(A4 to editor)is OK.

6: Similarly you can check other Trk.

### **M4L Editor:**

Close your all apps

1: open ableton live and go to MIDI setup page



And turn of the Elektron Analog Four port.

2: double click the “ableton to a4”patch



This window will show up.

So click the refresh button and set the MIDI port and channel same as standalone editor.

3: open the M4L editor



Turn on the connect button and hit the editor button,

Editor windows will show up.

4: You can test the connection in the same way as standalone editor.

I use USB port for connecting editor and standard MIDI port for MIDI sync and Note in.

I think this is the best way controlling A4.