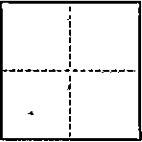


CORNER RECORD

CR 28

COUNTY OF ALAMEDA T. 3 S R. 2 W Mt. Diablo MERIDIAN CALIFORNIA
 CORNER TYPE: GOV'T. CORNER ☐ MEANDER ☐ RANCHO ☐ CONTROL ☐ OTHER ☒
 CORNER IDENTIFICATION — DATE OF VISIT March 26 1986



CORNER — LEFT AS FOUND ☐ FOUND AND TAGGED ☐ REESTABLISHED OBLITERATED CORNER ☐ REBUILT ☒

PHYSICAL DESCRIPTION OF CORNER FOUND; EVIDENCE AND METHOD USED TO IDENTIFY OR REESTABLISH

*No points found
 Set corners as shown below.*

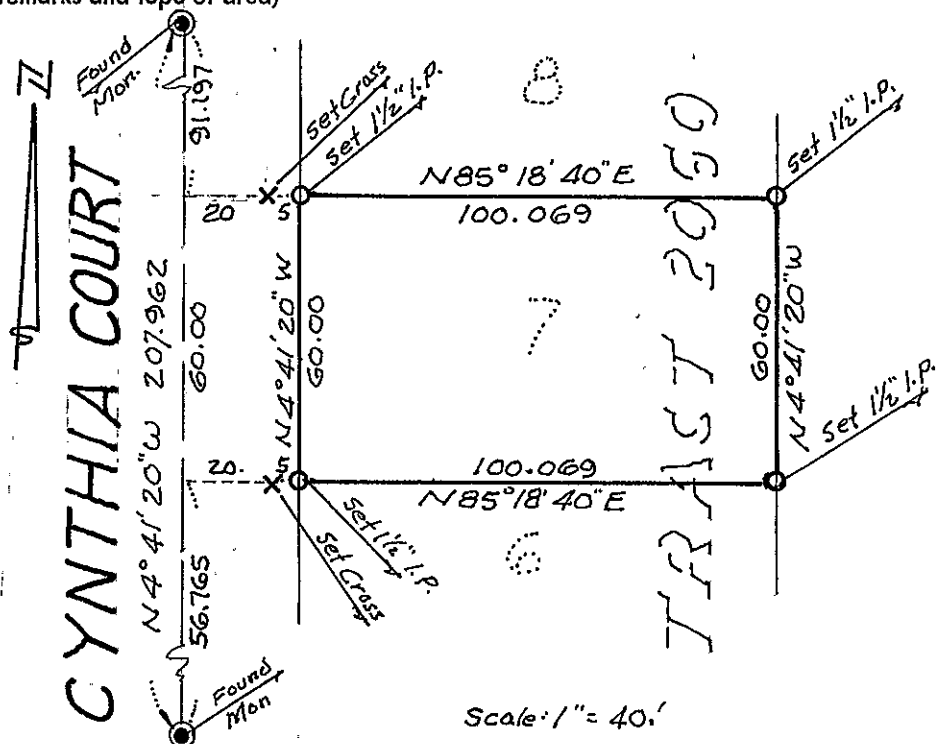
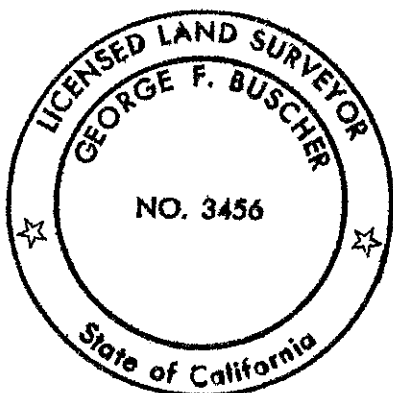
PHYSICAL DESCRIPTION OF MONUMENTS REBUILT OR PERPETUATED

See sketch below.

CALIFORNIA COORDINATE SYSTEM ORDER: FIRST ☐ SECOND ☐ THIRD ☐
 STATIONS USED: NGS (USC & GS) ☐ STATE ☐ COUNTY ☐ OTHER ☒ STATION _____ STATION _____
 ZONE III ELEVATION 320 ± NORTHINGS (Y) 437,100 ± EASTINGS (X) 1,549,600. ±

(Fold)

SKETCH: (Include reference tie or witness points, remarks and topo of area)



SURVEYOR'S CERTIFICATE

THIS CORNER RECORD WAS PREPARED BY ME OR UNDER MY DIRECTION IN CONFORMANCE WITH THE LAND SURVEYORS ACT ON March 26 1986

SIGNED: G. Buscher

L.S. or R.C.E. No.: L.S. 3456

SEAL

COUNTY SURVEYOR'S CERTIFICATE

THE CORNER RECORD WAS RECEIVED March 28 1986 AND EXAMINED AND FILED March 28 1986

BY: Robert C. Deffen

TITLE: Chief Deputy County Surveyor

DOCUMENT No. 86-3

STATEMENT ON BACK OF SHEET

BK 1 C.R. pg 28

YES ☐ NO ☒