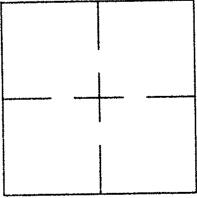


CORNER RECORD

Document Number CR 6725City of OAKLANDCounty of ALAMEDA, CaliforniaBrief Legal Description WELL MONUMENT LOCATED WITHIN JACKSON ST AND 13TH ST.

CORNER RECORD

Government Corner ☐ Control ☒
 Meander ☐ Property ☐
 Rancho ☐ Other ☐
 Date of Survey 09/23/2014

COORDINATES
(Optional)

N. _____
 E. _____
 Zone _____ Datum _____
 Elev. _____

Corner — Left as found ☒ Found and tagged ☐ Established ☐ Reestablished ☐ Rebuilt ☐

Identification and type of corner found: Evidence used to identify or procedure used to establish or reestablish the corner:
FOUND IRON PIN IN WELL MONUMENT IN INTERSECTION OF JACKSON ST AND 13TH ST.

AS SHOWN ON CITY OF OAKLAND MONUMENT MAP, PAGE 203

NO CITY MONUMENT DESIGNATION NUMBER AT SUBJECT LOCATION.

THIS POINT WAS REFERENCED PRIOR TO A CONSTRUCTION PROJECT IN THE VICINITY.

A description of the physical condition of the monument as found and as set or reset: _____

FOUND AND SET POINTS AS SHOWN ON PAGE 2.

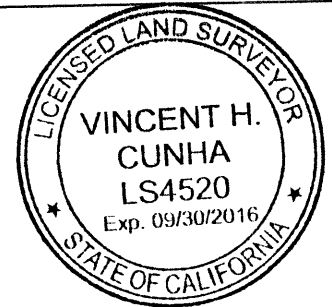
THESE TIES ARE FOR THE PURPOSE OF PERPETUATING THE FOUND MONUMENTATION.

NO CLAIM IS MADE AS TO THE RELATIONSHIP OF THE POINTS OR LINES SHOWN HEREON
 TO TRUE BOUNDARY LOCATIONS.

SURVEYOR'S STATEMENT

This Corner Record was prepared by me or under my direction in conformance with
 the Land Surveyors' Act on SEPTEMBER 26, 2014.

Signed Vincent H. Cunha L.S. Number LS 4520
 VINCENT H. CUNHA



COUNTY SURVEYOR'S STATEMENT

This Corner Record was received 9-29-2014 and examined

and filed 11-13-2014

Signed Russell R. Penland Title County Surveyor



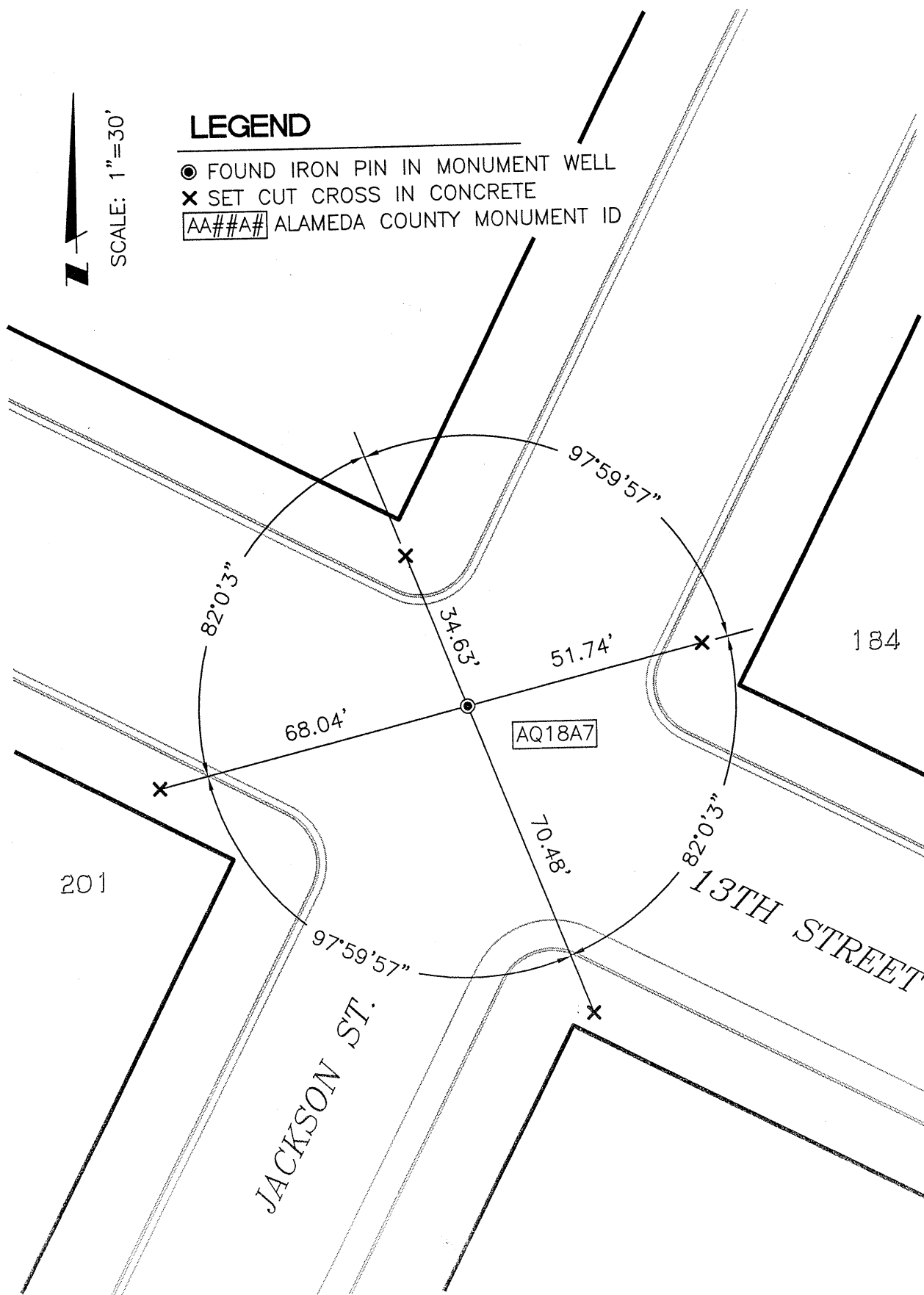
County Surveyor's Comment _____



SCALE: 1"=30'

LEGEND

- FOUND IRON PIN IN MONUMENT WELL
- ✕ SET CUT CROSS IN CONCRETE
- AA##A# ALAMEDA COUNTY MONUMENT ID



214073-JACKSON-CR3