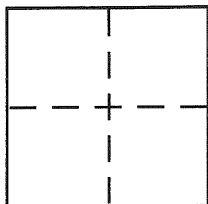


CORNER RECORDDocument Number CR 1631City of BERKELEYCounty of ALAMEDA, CaliforniaBrief Legal Description LOT 9, BLOCK 5, MAP OF CLAREMONT (20 M 50)**CORNER TYPE**

Government Corner ☐ Control ☐
 Meander ☐ Property ☒
 Rancho ☐ Other ☐
 Date of Survey 11/28/01

COORDINATES (Optional)

N. _____
 E. _____
 Zone _____ NAD27 ☐ NAD83 ☐
 NAD83 Epoch _____
 Elev. _____
 Vert. Datum: NGVD29 ☐ NAVD88 ☐
 Meas. Units: Metric ☐ Imperial ☐

Corner – Left as found ☐ Found and tagged ☐ Established ☒ Reestablished ☐ Rebuilt ☐

Identification and type of corner found: Evidence used to identify or procedure used to establish or reestablish the corner:

FOUND CITY MONUMENT (PIN)

POSITION OF MONUMENTS FOR THIS SUBDIVISION FROM: CITY OF BERKELEY

CALCULATION MAP, ON FILE IN THE PUBLIC WORKS DEPARTMENT (PLAN 25963B)

A description of the physical condition of the monument as found and as set or reset:

SET 5/8" REBAR AND PLASTIC CAP, RCE 18650

SET CROSS AND BRASS TAG, RCE 18650

FOUND 1/2" REBAR AND PLASTIC CAP, LS 3833

SURVEYOR'S STATEMENT

This Corner Record was prepared by me or under my direction in conformance with the Land Surveyor's Act on 1-02-02

Signed

P.L.S or R.C.E. No.

18650**COUNTY SURVEYOR'S STATEMENT**

This Corner Record was received

1-4-02

and examined and filed

6-7-02

Signed

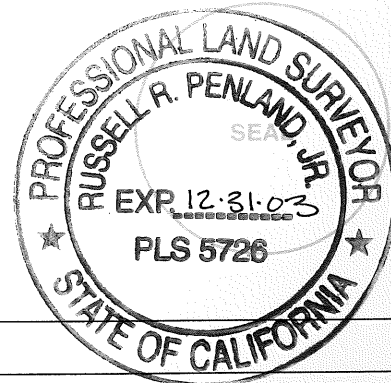
P.L.S or R.C.E. No.

5726

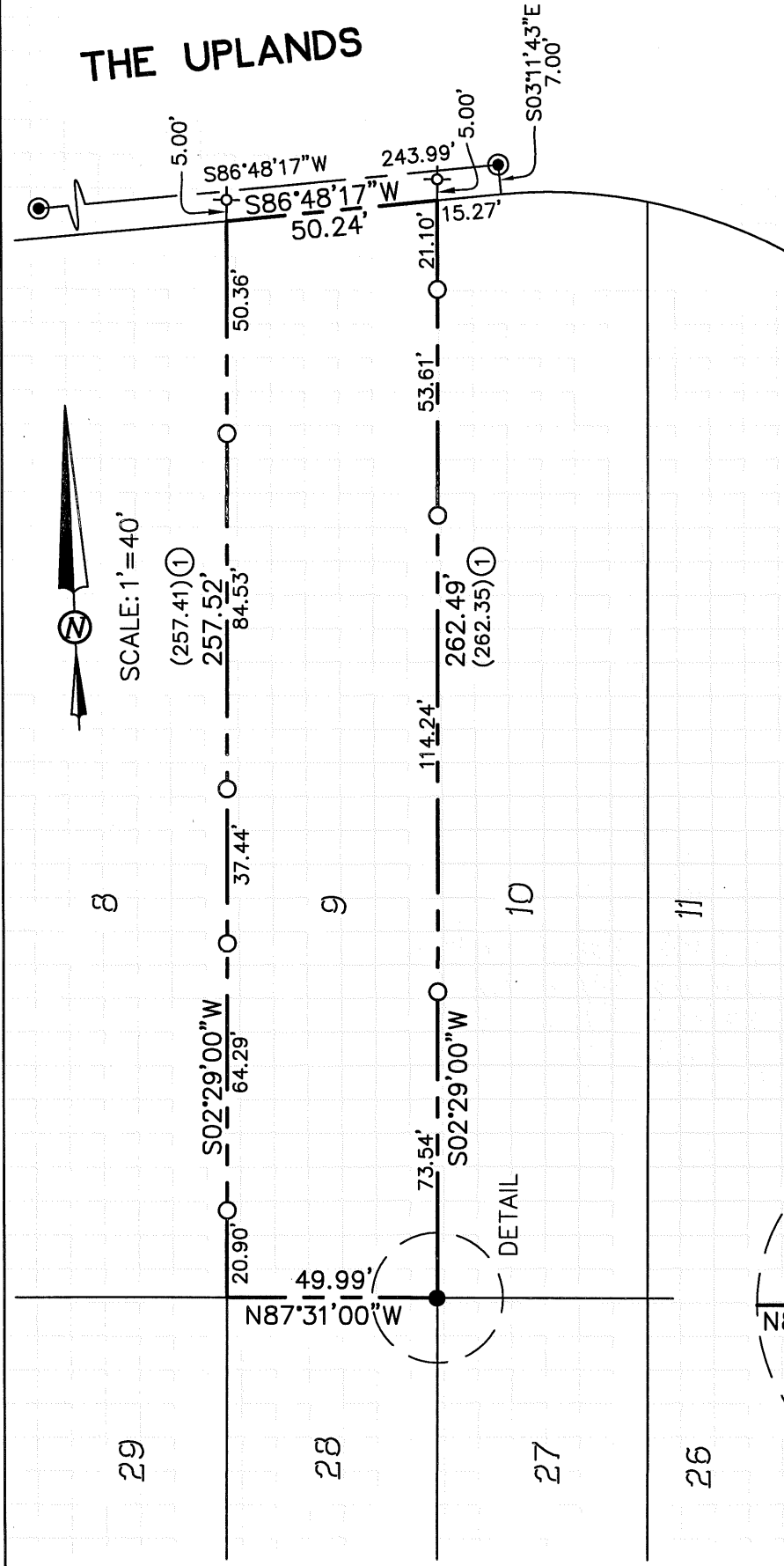
Title

COUNTY SURVEYOR

County Surveyor's Comment



THE UPLANDS

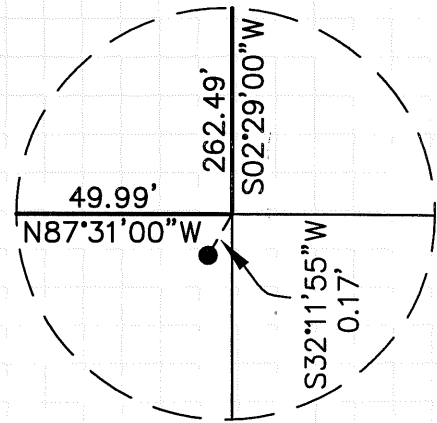


REFERENCE

① MAP OF CLAREMONT (20 M 50)

LEGEND

- SET 5/8" REBAR AND PLASTIC CAP RCE 18650
- ⊕ SET CROSS AND BRASS TAG RCE 18650
- FOUND CITY MONUMENT WITH PIN
- FOUND 5/8" REBAR AND PLASTIC CAP LS 3833, NO RECORD



DETAIL
NO SCALE