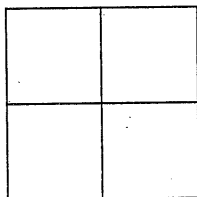


## CORNER RECORD

Document Number CR 5618City of OAKLANDCounty of ALAMEDA, CaliforniaBrief Legal Description IRON PIN MONUMENT LOCATED WITHIN GRIZZLY PEAK BOULEVARD.(70/C BM)2

## CORNER RECORD

Government Corner ☐Meander ☐Rancho ☐Date of Survey 5/3/13Control ☒Property ☐Other ☐COORDINATES  
(Optional)N. 2144392 ±1'E. 6065654 ±1'Zone          Datum         Elev.         

Corner — Left as found ☒ Found and tagged ☐ Established ☐ Reestablished ☐ Rebuilt ☐

Identification and type of corner found: Evidence used to identify or procedure used to establish of reestablish the corner:

FOUND IRON PIN MONUMENT LOCATED WITHIN GRIZZLY PEAK BOULEVARD APPROXIMATELY0.424 MILES NORTHERLY FROM THE INTERSECTION OF FISH RANCH ROAD.AS SHOWN ON CITY OF OAKLAND MONUMENT MAP, PAGE 348.THIS POINT WAS REFERENCED PRIOR TO A CONSTRUCTION PROJECT IN THE VICINITY.

A description of the physical condition of the monument as found and as set or reset:

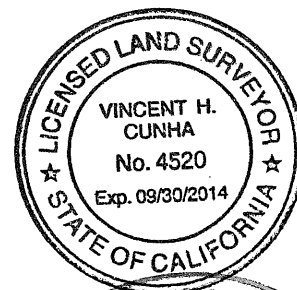
FOUND AND SET POINTS AS SHOWN ON PAGE 2.THESE TIES ARE FOR THE PURPOSE OF PERPETUATING THE FOUND MONUMENTATION.NO CLAIM IS MADE AS TO THE RELATIONSHIP OF THE POINTS OR LINES SHOWN HEREONTO TRUE BOUNDARY LOCATIONS.

## SURVEYOR'S STATEMENT

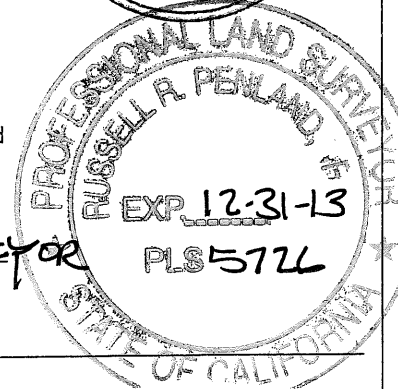
This Corner Record was prepared by me or under my direction in conformance with

the Land Surveyors' Act of MAY 7, 2013.Signed Vincent H. Cunha L.S. Number LS 4520

VINCENT H. CUNHA



## COUNTY SURVEYOR'S STATEMENT

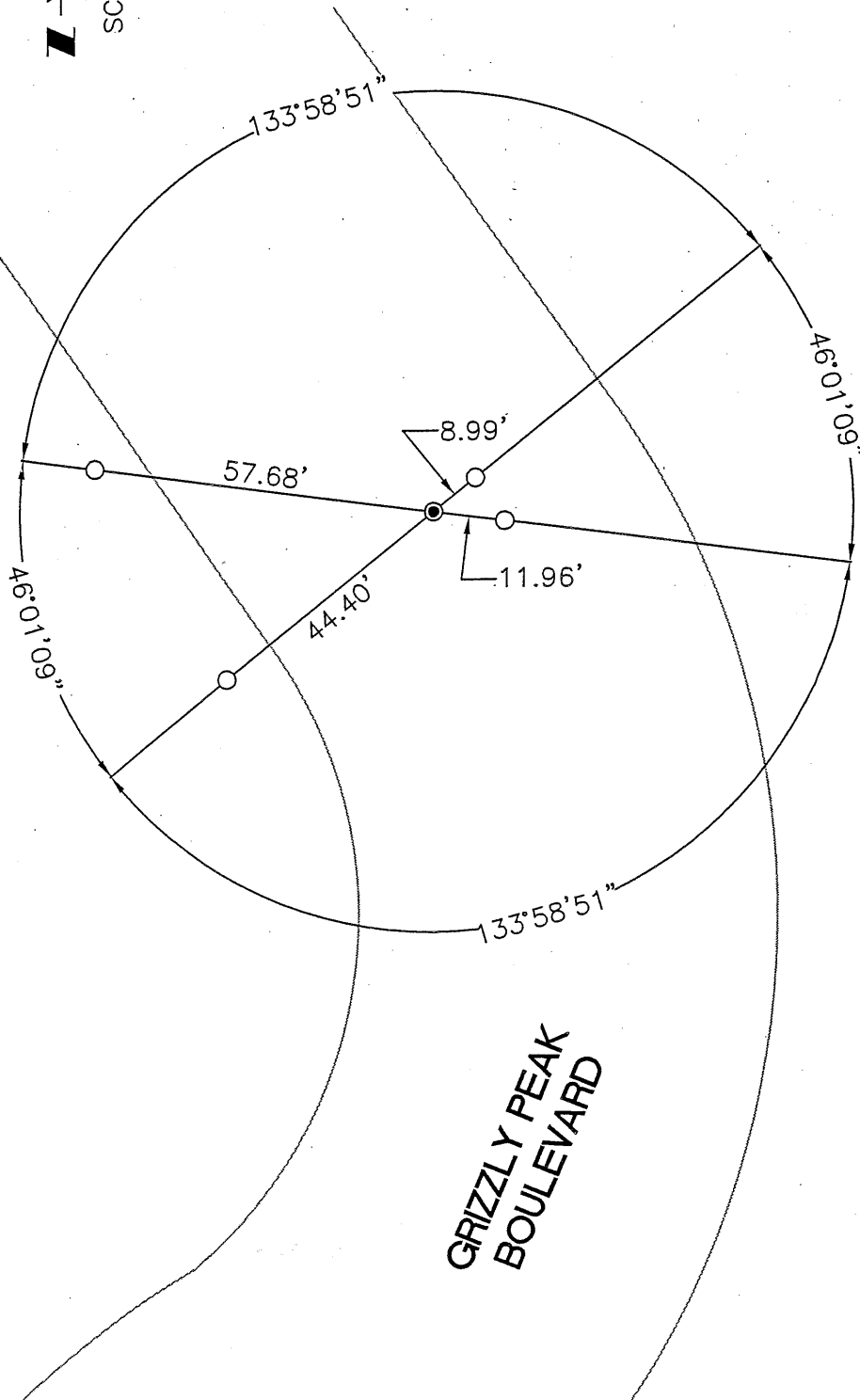
This Corner Record was received 5.30.2013 and examinedand filed 8.23.2013Signed Russell R. Penland Title COUNTY SURVEYOR

County Surveyor's Comment

SCALE: 1"=30'

# LEGEND

- FOUND IRON PIN IN MONUMENT WELL  $\left(\frac{70/C}{2} \text{ BM}\right)$
- SET 1/2" REBAR & BLANK CAP



GRIZZLY PEAK  
BOULEVARD