

RECORD OF SURVEY MAP OF A PORTION OF THE CAMANCHE RESERVOIR PROJECT SECTION 18, T4N R10E, MDB & M CALAVERAS COUNTY, CALIFORNIA

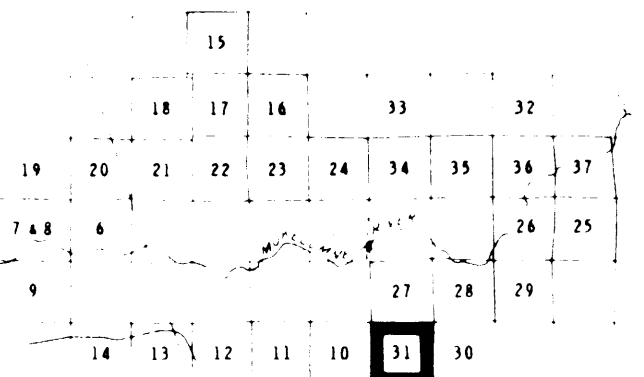
SURVEY BY AND FOR
EAST BAY MUNICIPAL UTILITY DISTRICT
J. D. DeCOSTA CHIEF ENGINEER RE 969

NOTES:

- Bearings, distances and coordinates shown are based on the California Coordinate System Zone 3. Multiply distances shown by 1.00005254 to obtain ground level distances.
- Data shown in parentheses is record.
- Data shown in brackets [] is taken from the Official Public Land Survey.
- Data shown in angles < > is taken from the Record of Survey by Paul B. Russell, LS 2248 filed March 1959 in Bk. 2, Rec. of Surveys, Pg. 88.
- Data shown in braces { } is taken from the Record of Survey by Paul B. Russell, LS 2248 filed Nov. 1953 in Bk. 1, Rec. of Surveys, Pg. 72.
- Monuments set by EBMUD survey 1961-1962:
 - Corner marked with brass pin and cap.
 - Corner marked with brass pin and cap in rock mound.
 - Corner marked with brass pin and cap in rock mound and steel fence post.
 - Corner marked with brass pin and cap and steel fence post.
- For Horizontal Control Scheme and data, see Dwg. 2 through 5
- This map is a photo reduction of a portion of the EBMUD Camanche Reservoir Project Boundary Survey, Dwg. N-421.

REFERENCES:

FB 2741, 2742, 2760, 2763, 2764, 2766, 2768, 2790, 2791 and 2793 Vol. 205, Calaveras Co. FB 7, 75, 120, 124, 175, 181, 184 and 191 Bk. 2 Rec. of Surveys Pg. 88 & Bk. 1 Rec. of Surveys, P. 72 Dwg. 4415-G-4, 7, 11 & 15, Properties; CD-14-6 & 7, Mokelumne Aqueduct; DH 4597-40-6, Photo-Contours; 4419-G-1, 1.1, 1.2, & 1.3, Horizontal Control Tabulation Data



NOTES:

- Sheet 1 consists of an index & affidavit sheet
- Sheets 2 through 5 consist of the Horizontal Control Scheme & Horizontal Control Data Tabulation

INDEX TO SHEETS

