

3/7/2018 11:29:14 AM

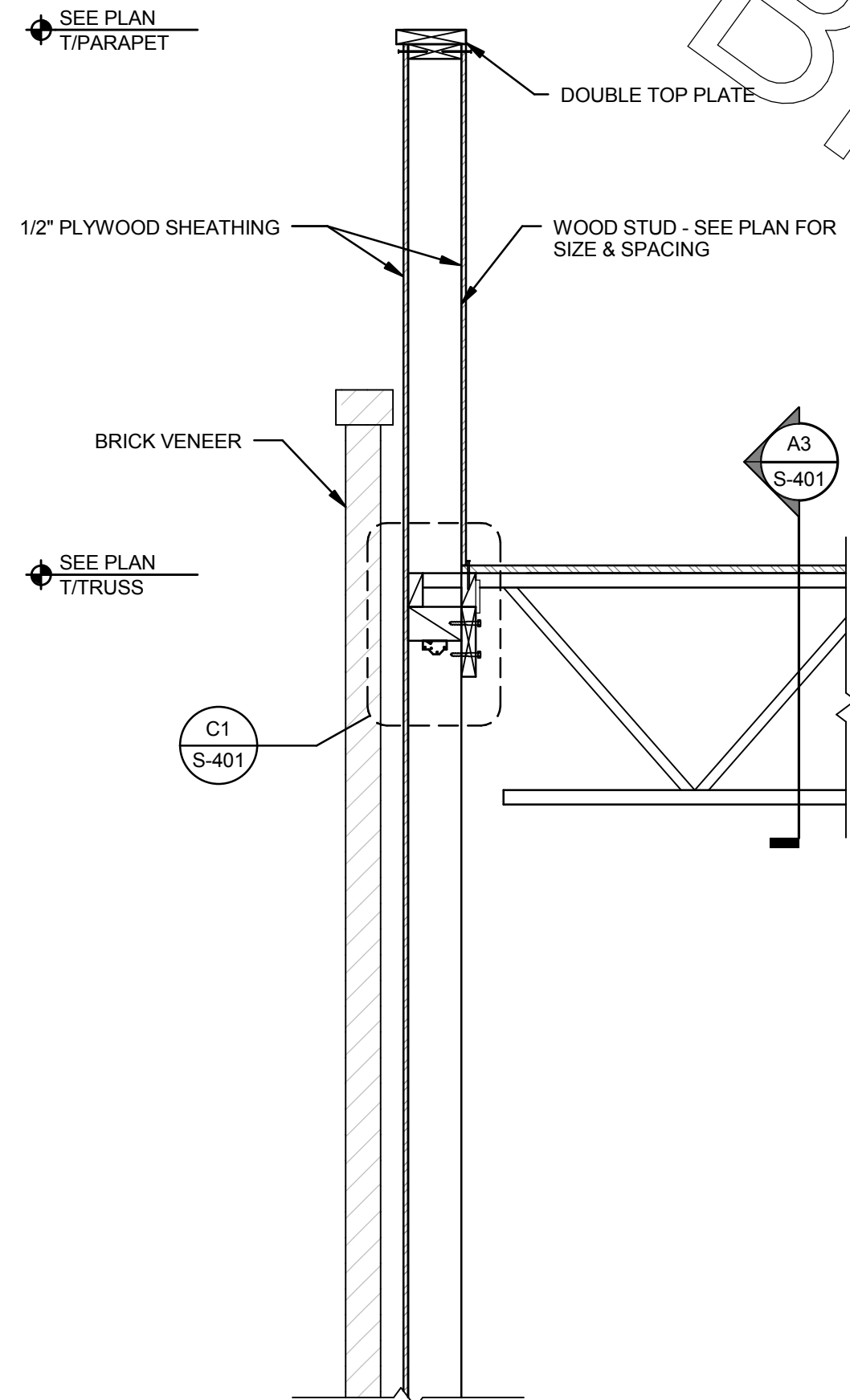
E

D

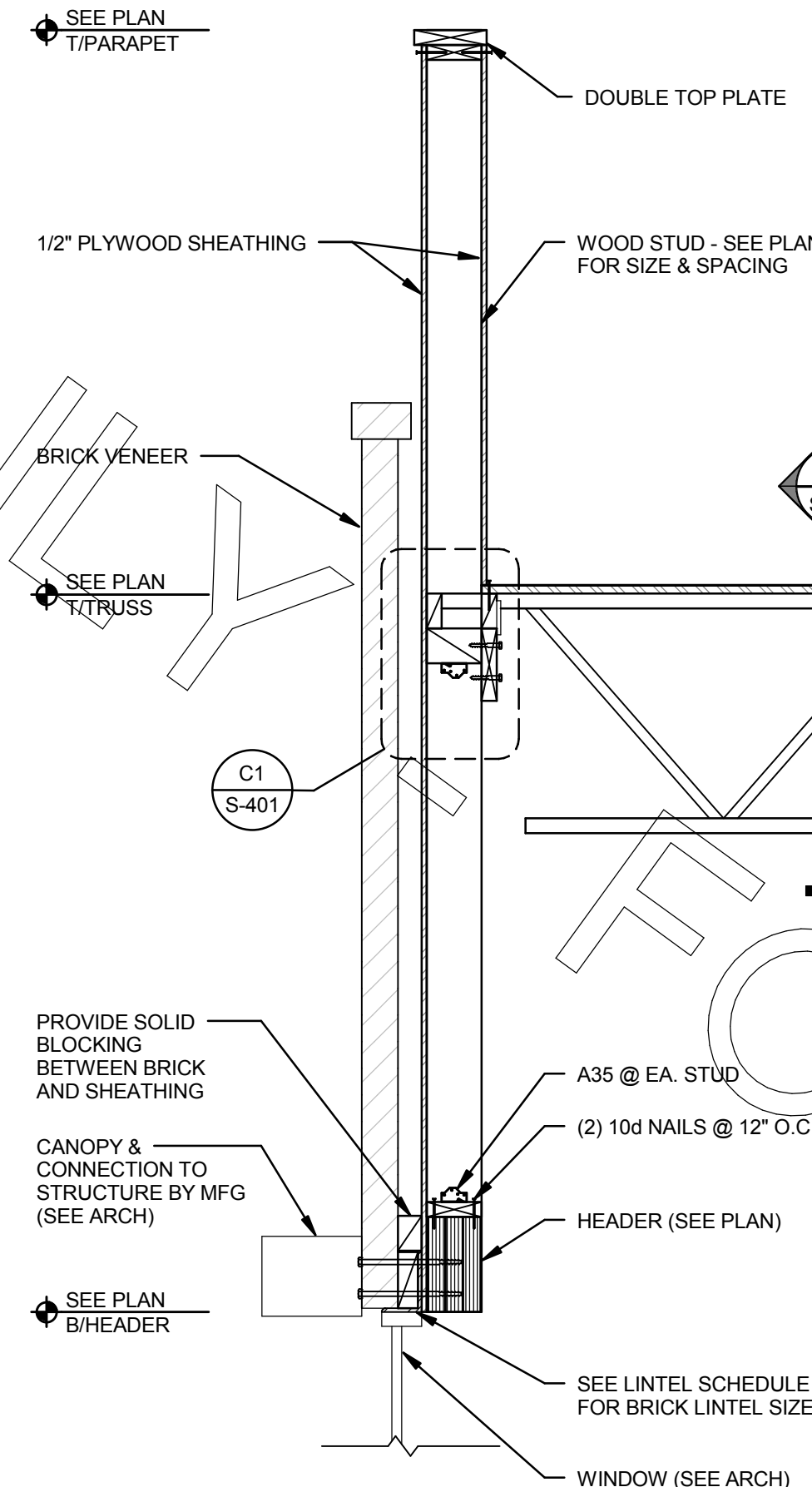
C

B

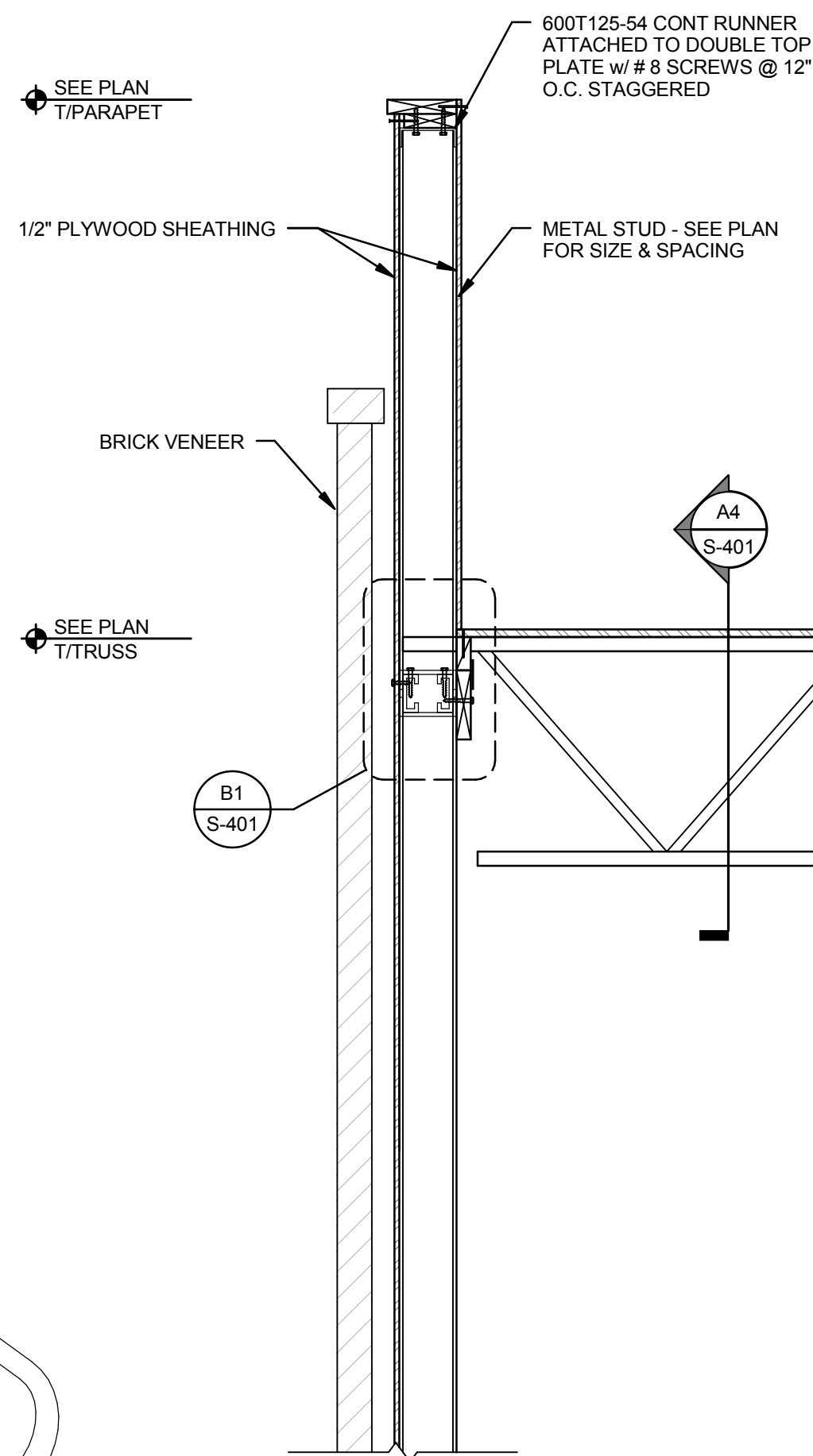
A



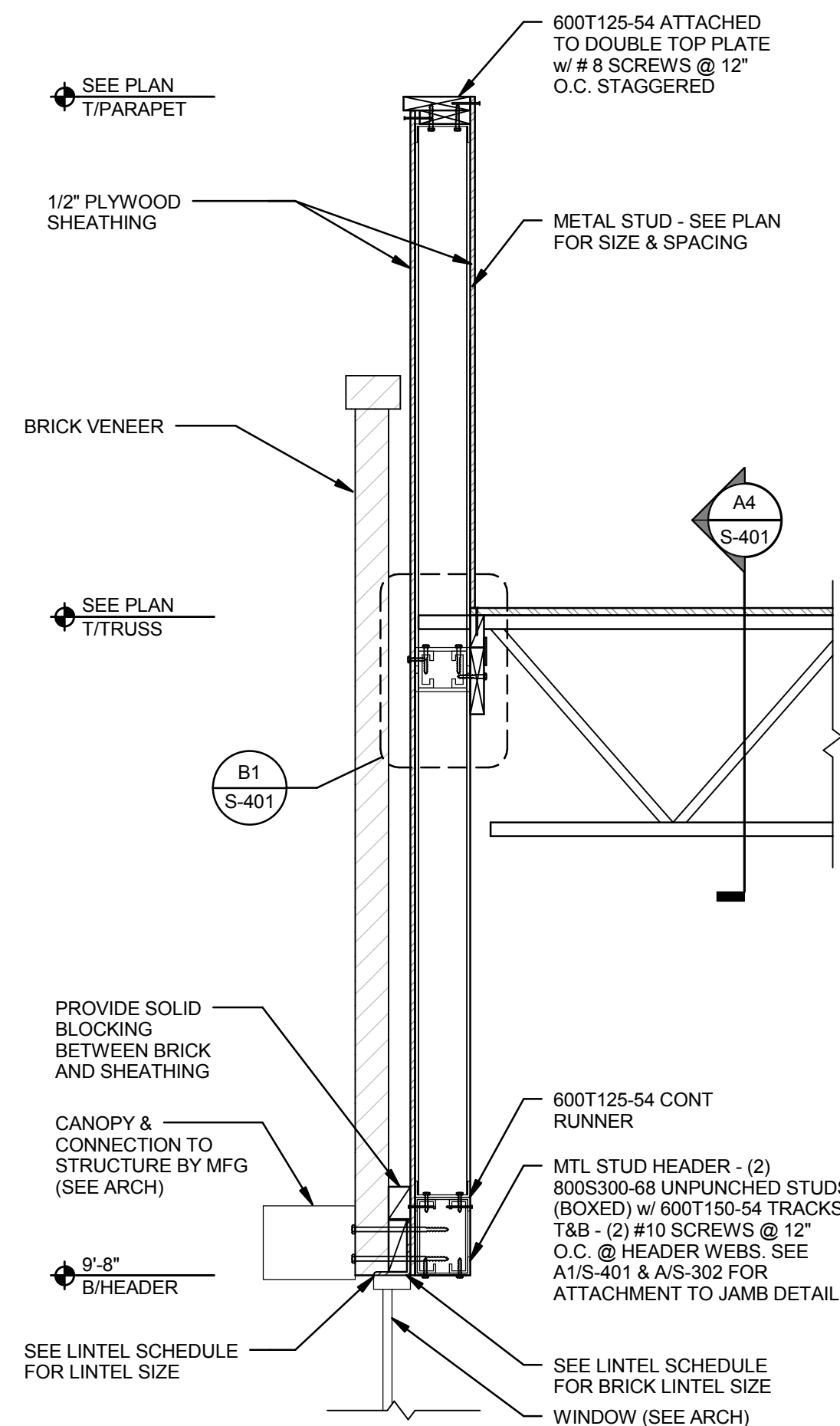
C4 TYP LOAD BEARING WALL SECTION
3/4" = 1'-0"



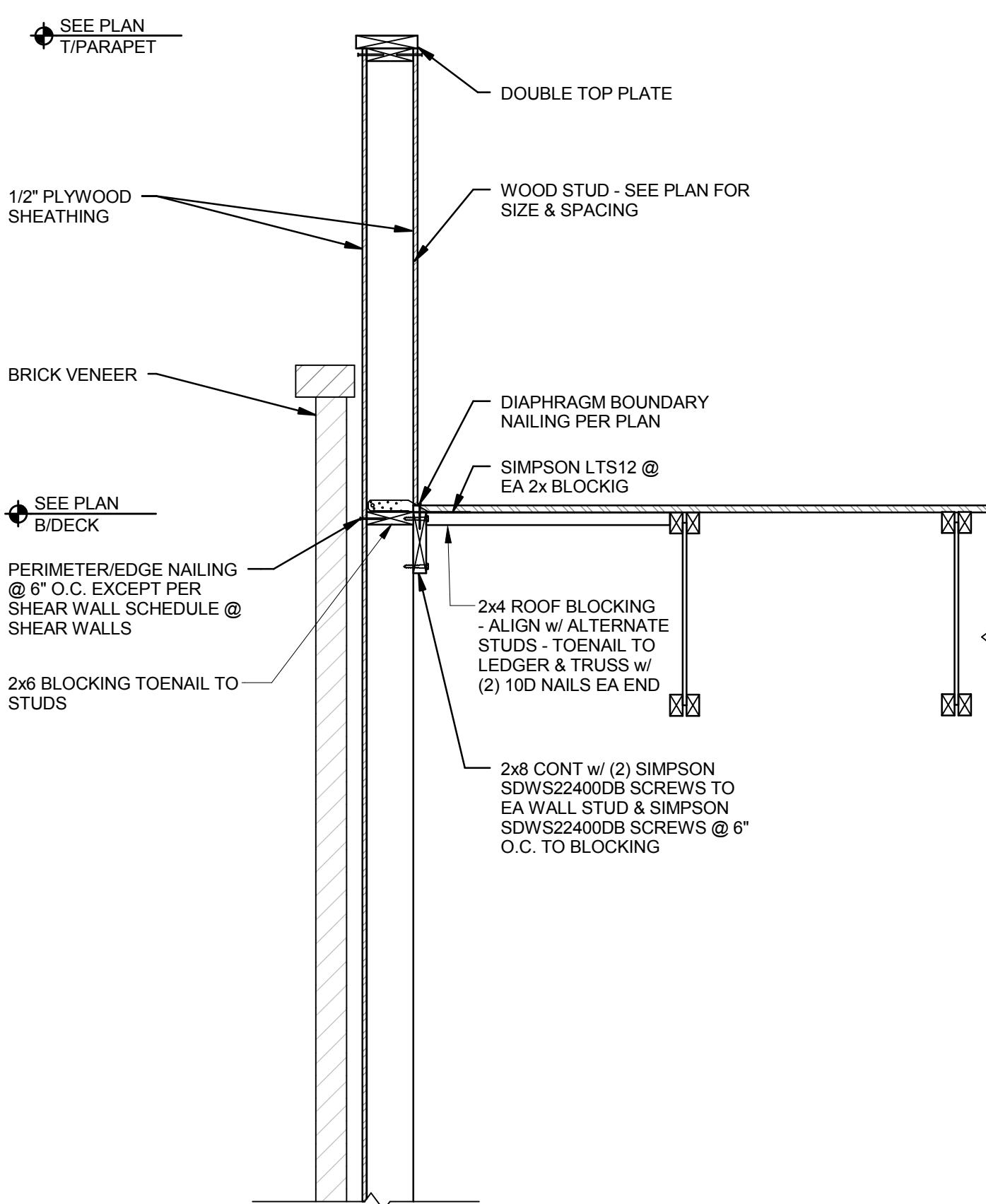
C3 TYP WALL W/ WINDOW
3/4" = 1'-0"



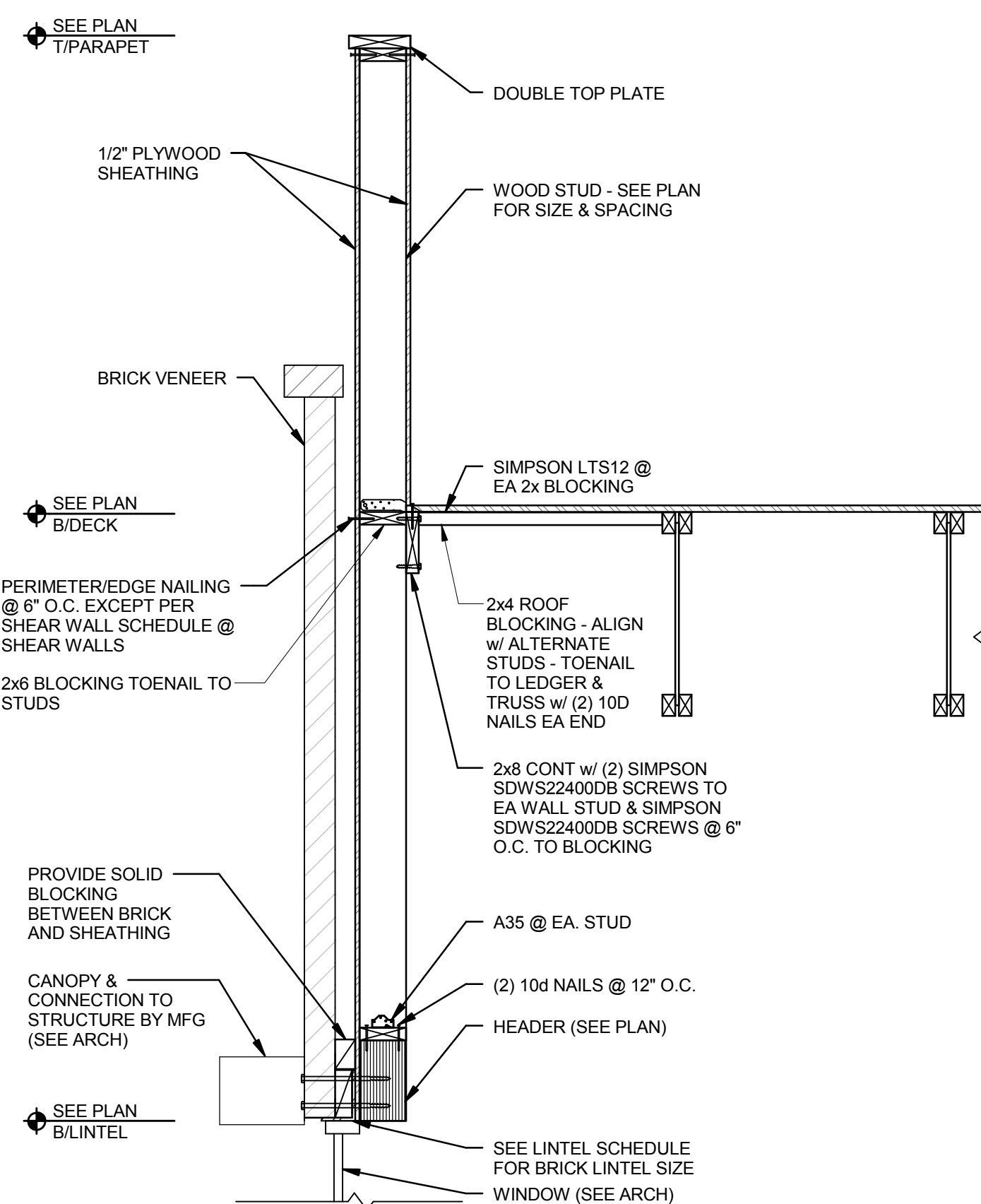
C2 TYP MTL STUD WALL
3/4" = 1'-0"



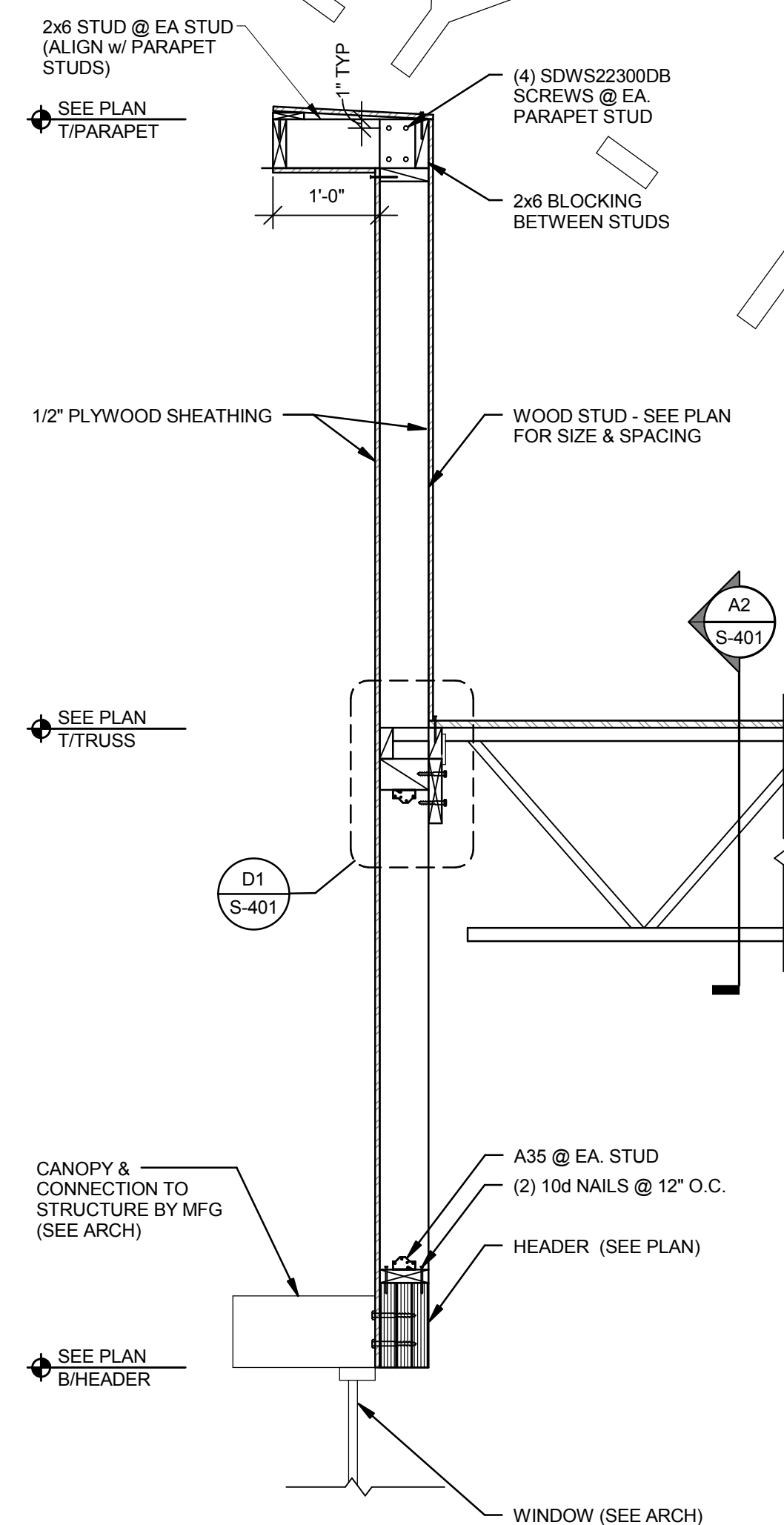
C1 MTL STUD WALL W/ WINDOW
3/4" = 1'-0"



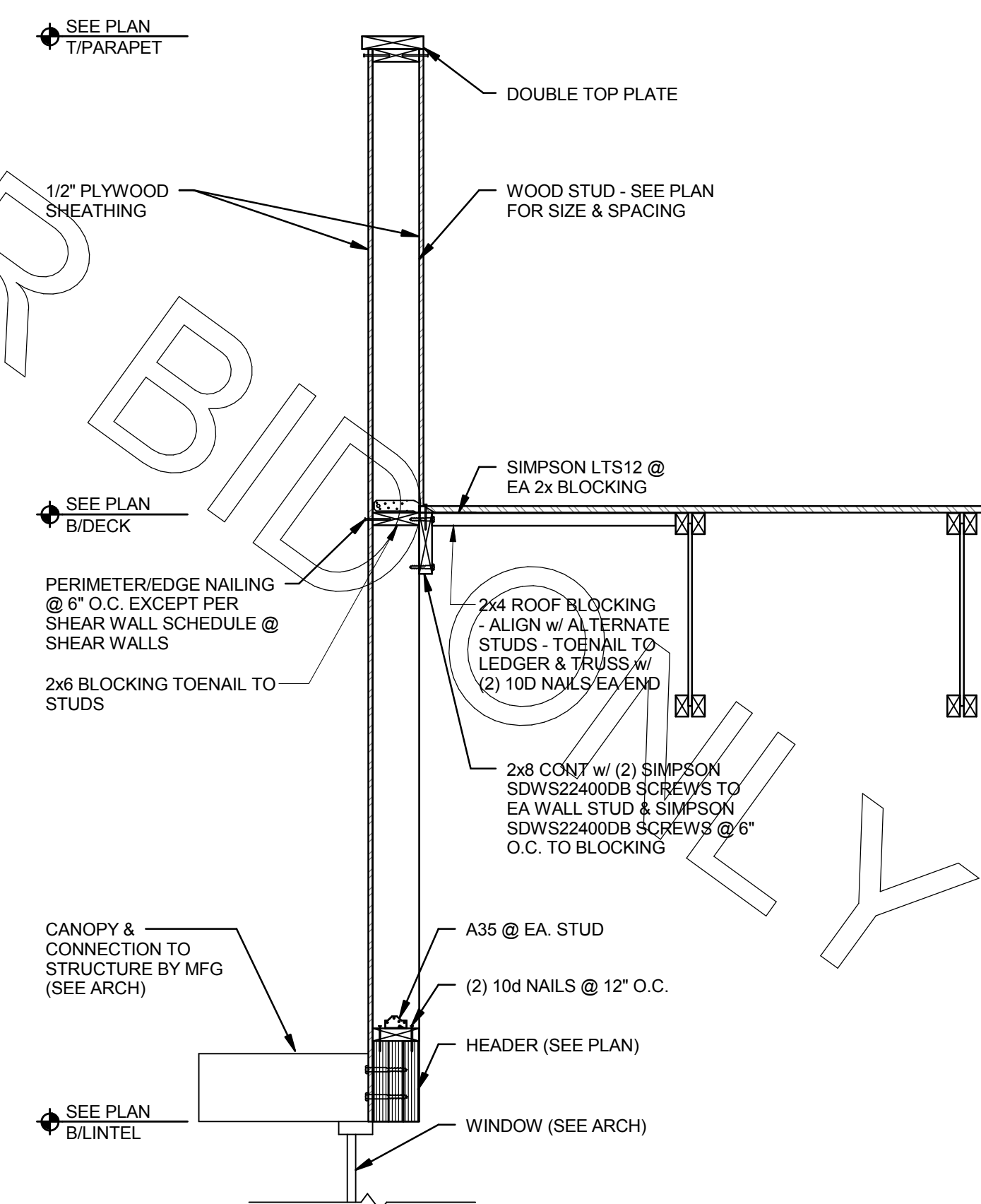
A4 NON-LOAD BEARING WALL SECTION
3/4" = 1'-0"



A3 NON-LOAD BRG WALL SECTION @ WINDOW AND DOORS
3/4" = 1'-0"



A2 TYP WALL W/ WINDOW AND NO BRICK
3/4" = 1'-0"



A1 NON-LOAD BRG WALL W/ WINDOW AND NO BRICK
3/4" = 1'-0"



Chick-fil-A

Chick-fil-A
5200 Buffington Road
Atlanta, Georgia 30349-2998

INTERPLAN

ARCHITECTURE
ENGINEERING
INTERIOR DESIGN
PROJECT MANAGEMENT
604 COURTLAND STREET
SUITE 100
ORLANDO, FLORIDA 32804
PH 407.645.5008
FX 407.629.9124



BRITT, PETERS
ASSOCIATES
CONSULTING ENGINEERS
999 WATERSIDE DRIVE
SUITE 2202
NORFOLK, VA 23510
PH 757.965.5710
BP# 171143

SEAL: THIS DOCUMENT IS NOT FOR CONSTRUCTION!
UNLESS THE ARCHITECT'S SIGNATURE AND SEAL APPEAR BELOW:

CHICK-FIL-A
Cherokee Place FSR
115 Cherokee Place, Cartersville, GA 30121

FSU# 00534

REVISION SCHEDULE
NO. DATE DESCRIPTION

1 171143
2 171143
3 171143

ENGINEER'S PROJECT # 171143
PRINTED FOR BID
DATE December 7, 2017
DESIGNED BY WBU
DRAWN BY JNJ

Information contained on this drawing and in all digital files produced for above named project may not be reproduced in any manner without express written or verbal consent from authorized project representatives.

SHEET SECTIONS & DETAILS

SHEET NUMBER

S-402