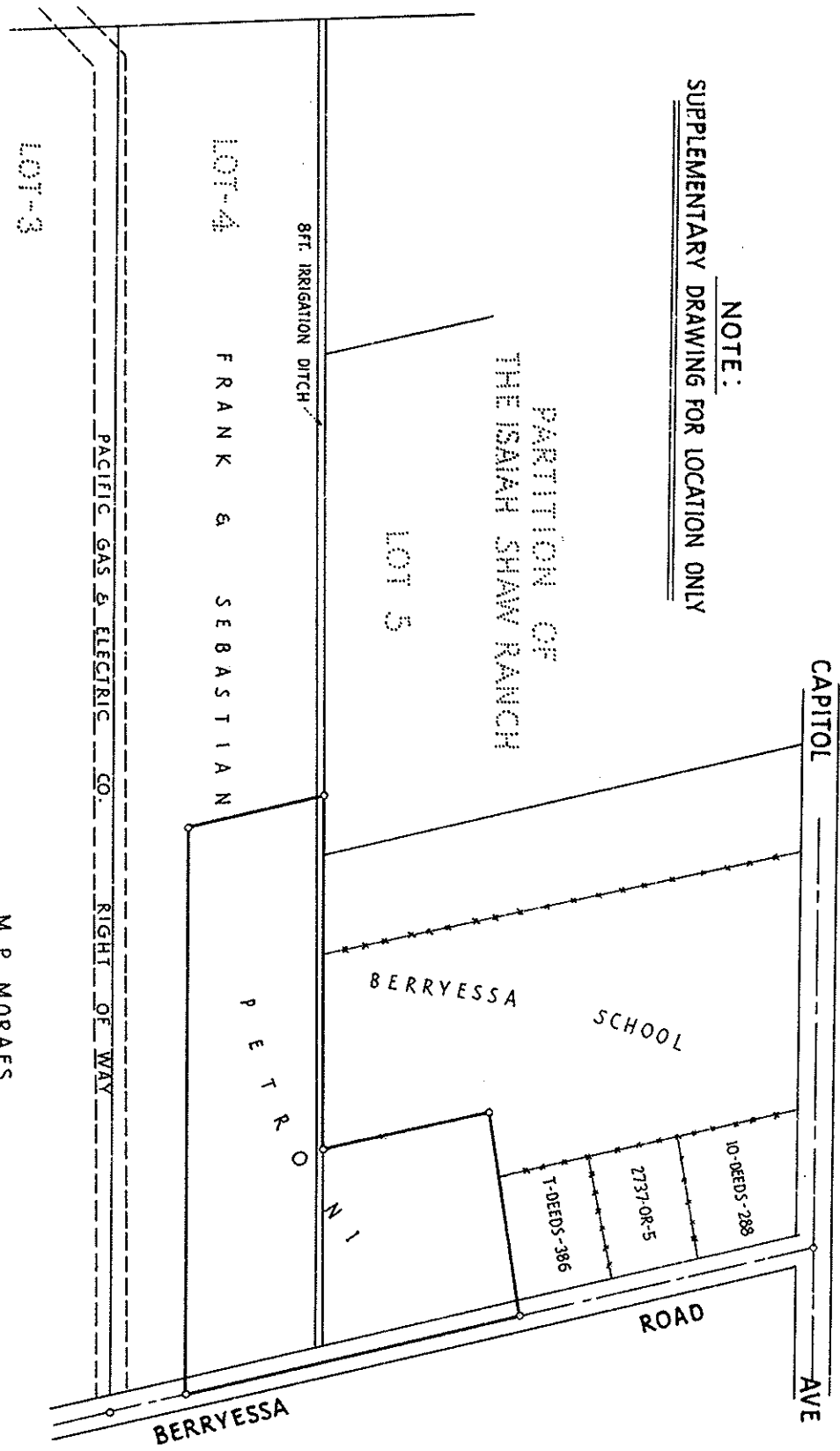


NOTE:  
SUPPLEMENTARY DRAWING FOR LOCATION ONLY



The basis of bearings for this map is the bearing N-39°30'-W as shown on the line dividing lots 4 & 5 on the map of the Partition of the Isaiah Shaw Ranch, said map filed for record in the Office of the County Recorder, Santa Clara County, California, in Book 72 of Map at page 2.

BASIS OF BEARINGS

PARCEL "C"  
14.337 AC. NET

PARCEL "A"  
2.574 AC. NET

SURVEYOR'S CERTIFICATE

This map correctly represents a survey made by me or under my supervision in conformance with the requirements of Chapter 15 of Division 3 of the Business and Professions Code at the request of Frank and Sebastian Petroni, May 1, 1959.

George R. Hilby  
R.C.E. No 221

COUNTY ENGINEER'S CERTIFICATE

This map has been examined for conformance with the requirements of Chapter 15 of Division 3 of the Business and Professions Code this 11th day of June, 1959.

Joseph R. Swainy  
Acting County Engineer  
By: [Signature]  
Deputy

RECORDER'S CERTIFICATE

1653522  
filed for record this 25th day of June, 1959 at 3:07 P.M. in Book 108 of Maps at page 1 at the request of George R. Hilby.

Syl C. Tully  
County Recorder  
By: [Signature]  
Deputy

RECORD OF SURVEY

BEING A PORTION OF 500 ACRE LOT 63  
PUEBLO TRACT NO. "1"  
PROPERTY OF

Frank & Sebastian Petroni

APRIL 1959

SCALE: 1"=100'

GEORGE R. HILBY

REGISTERED CIVIL ENGINEER REGISTRATION NUMBER 221

85 EAST SAN ANTONIO STREET

SAN JOSE CALIFORNIA