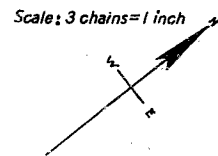


# BARRETT & MACK

SUBDIVISION OF THE GIANT OAK RANCH

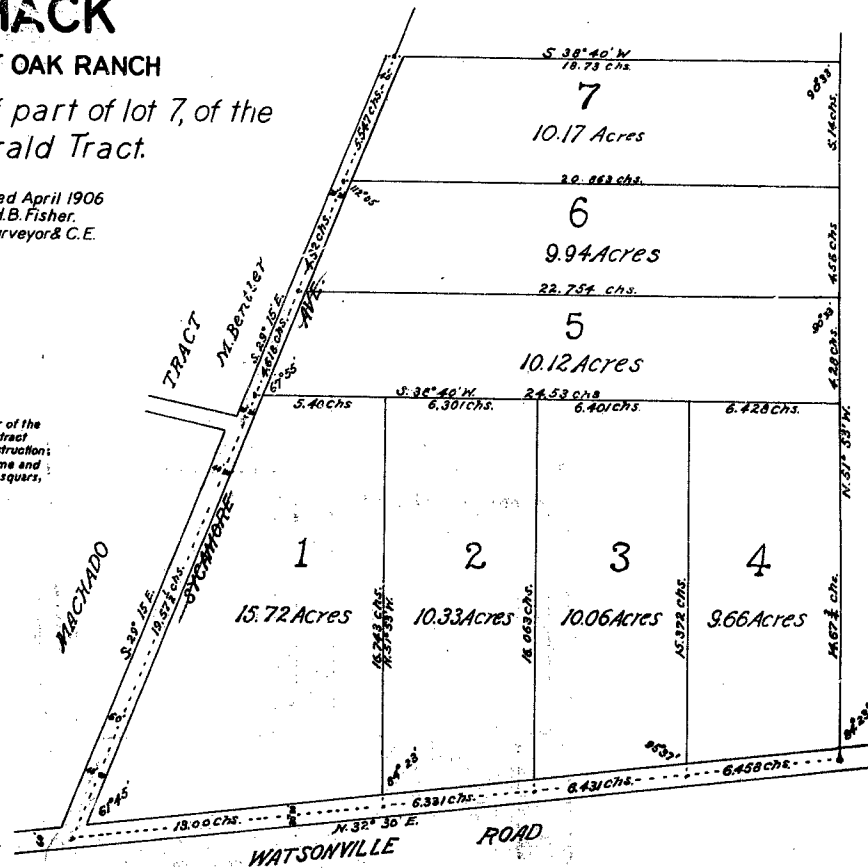
Being a subdivision of part of lot 7, of the  
Partition of the Fitzgerald Tract.



Surveyed April 1906  
by H.B. Fisher.  
Surveyor & C.E.

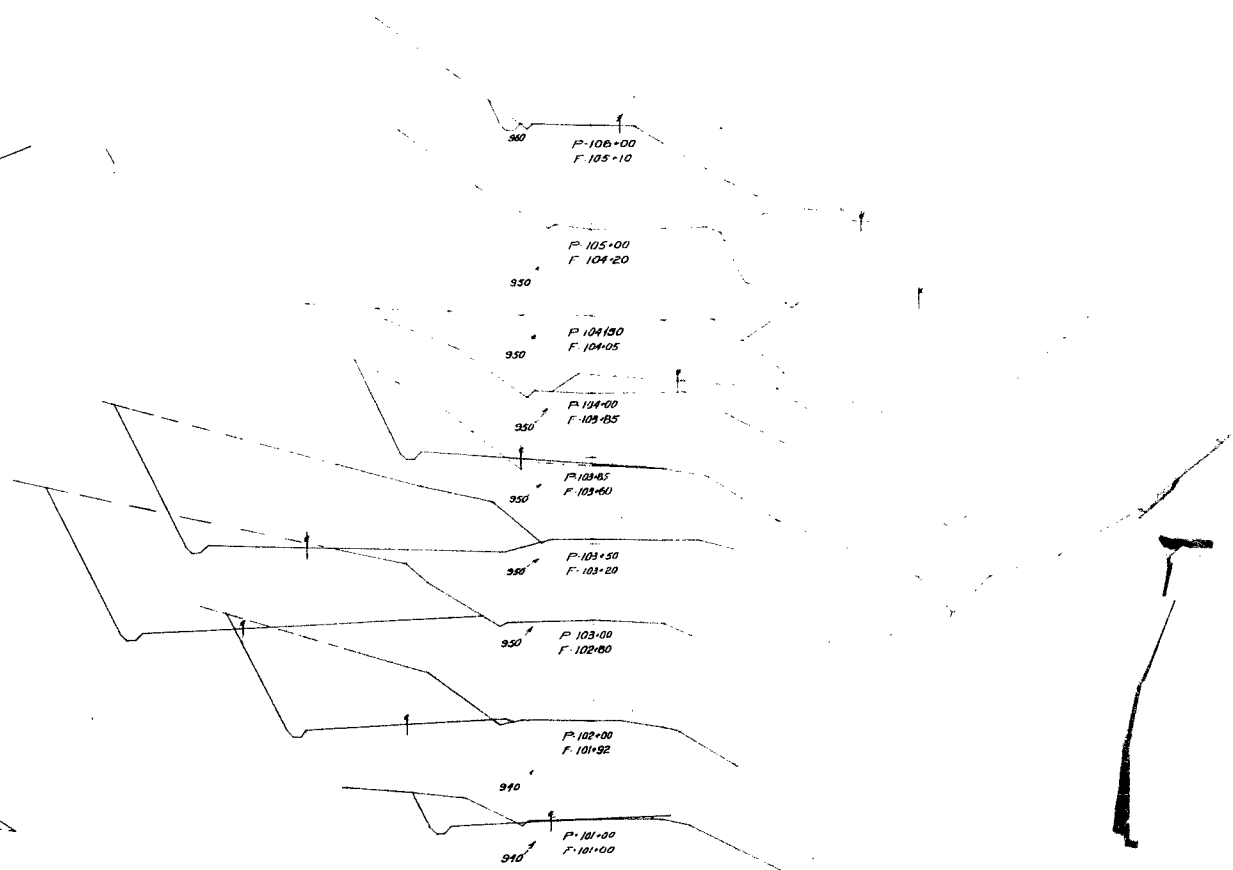
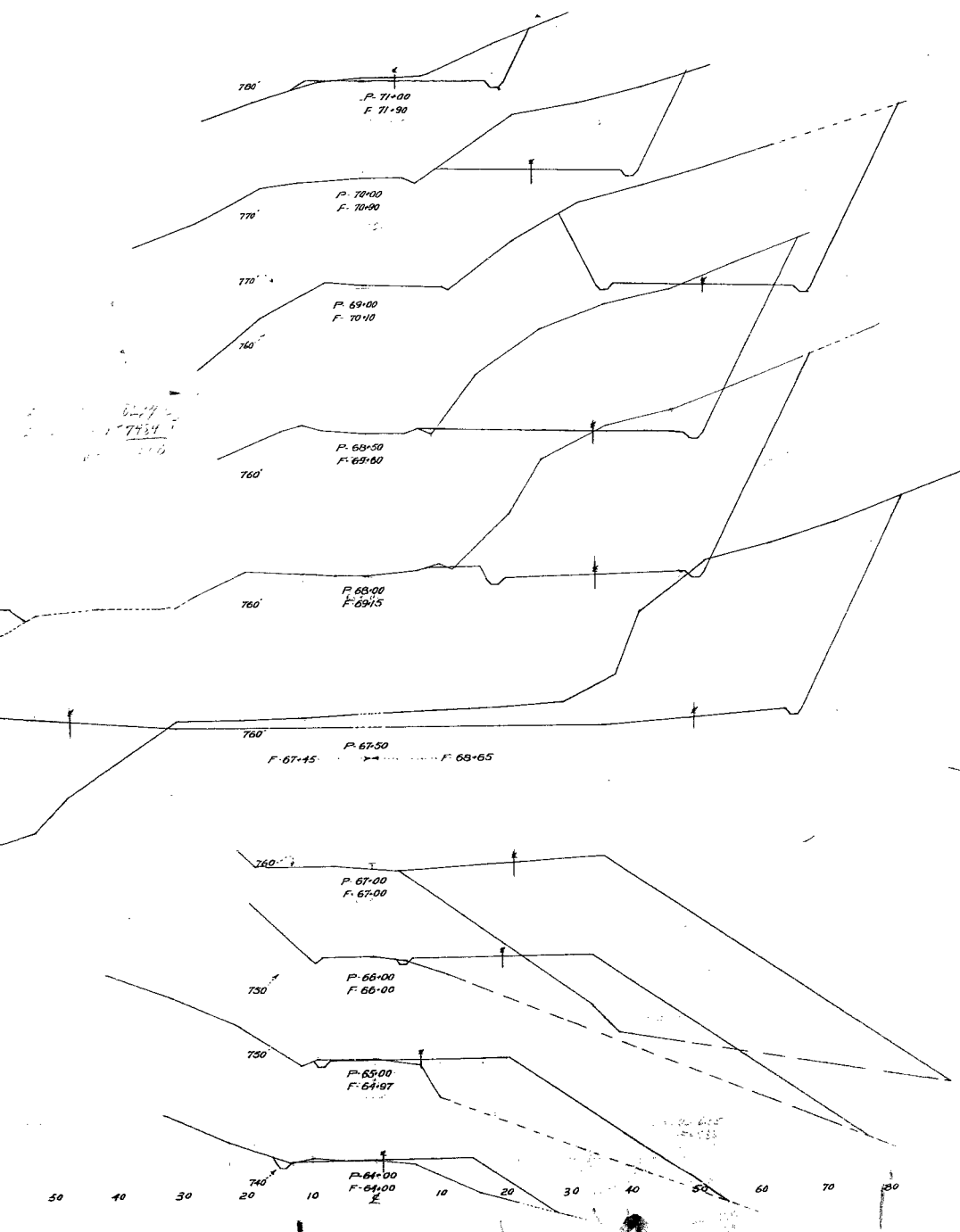
We hereby certify that the Garden City Bank & Trust Co. is the proprietor of the tract of land shown and delineated on the map hereto attached; that said tract has been laid out and the Blocks and Lots numbered according to its instruction; that the attached map fully and faithfully represents said Tract, its name and its subdivision, and it hereby dedicates the streets, (roads), alleys and squares, as shown on the accompanying map, to the use of the Public forever.  
Dated San Jose, Cal., May 15<sup>th</sup> A.D. 1906.  
Signed Garden City Bank & Trust Co.  
S.B. Jenkins Pres.

We hereby certify that we the proprietors of the westerly 20 feet Sycamore Avenue between the northerly line of lot 7 and point 1.435 chains South of the line between Lots 1 and 5, and we hereby dedicate Sycamore Avenue as shown on the accompanying map, to the use of the Public forever.  
Dated Morgan Hill Cal., May 19<sup>th</sup> A.D. 1896  
Signed J.W. Pond  
M.E. Bentler



3306



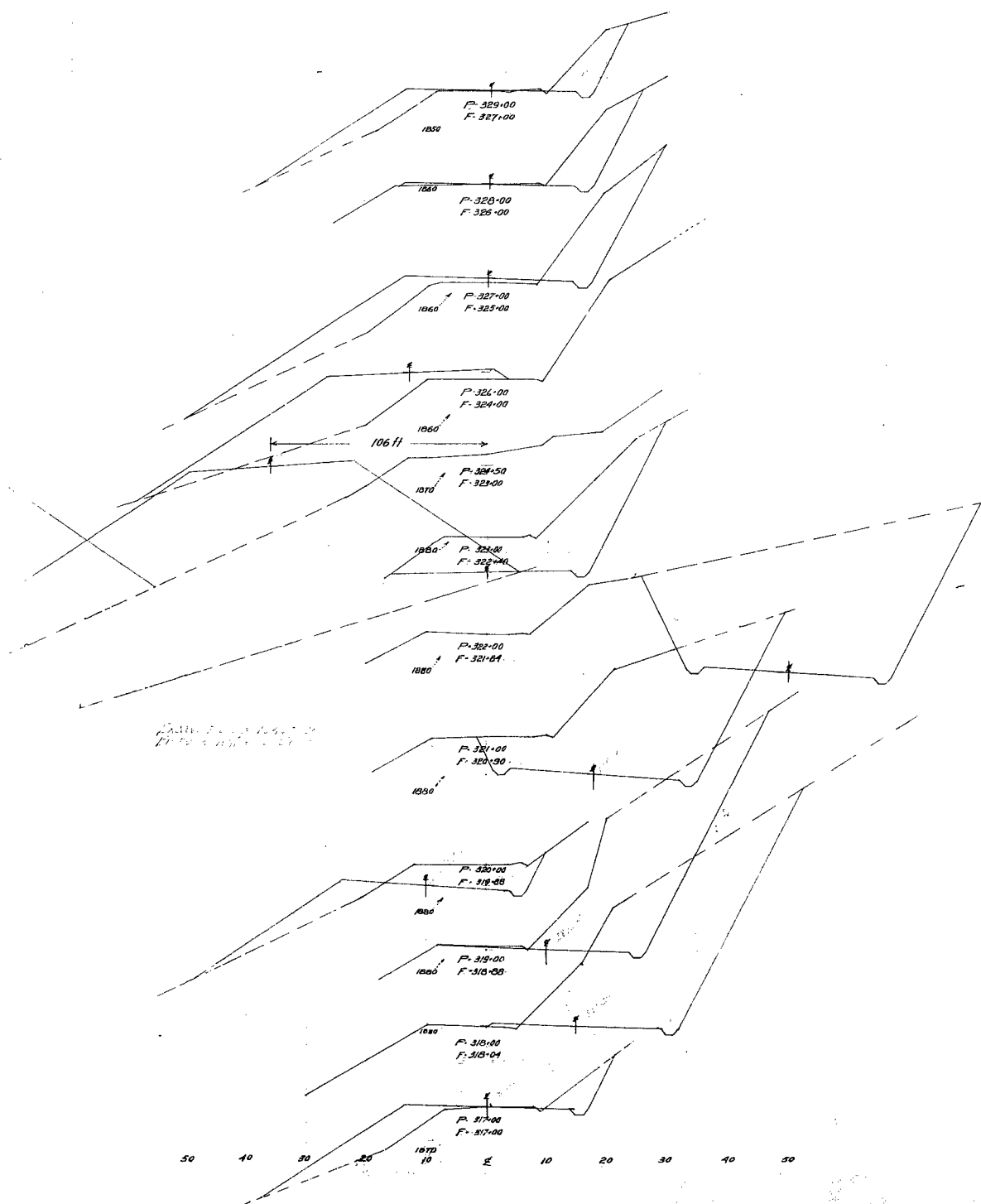


3307

MICROFILM

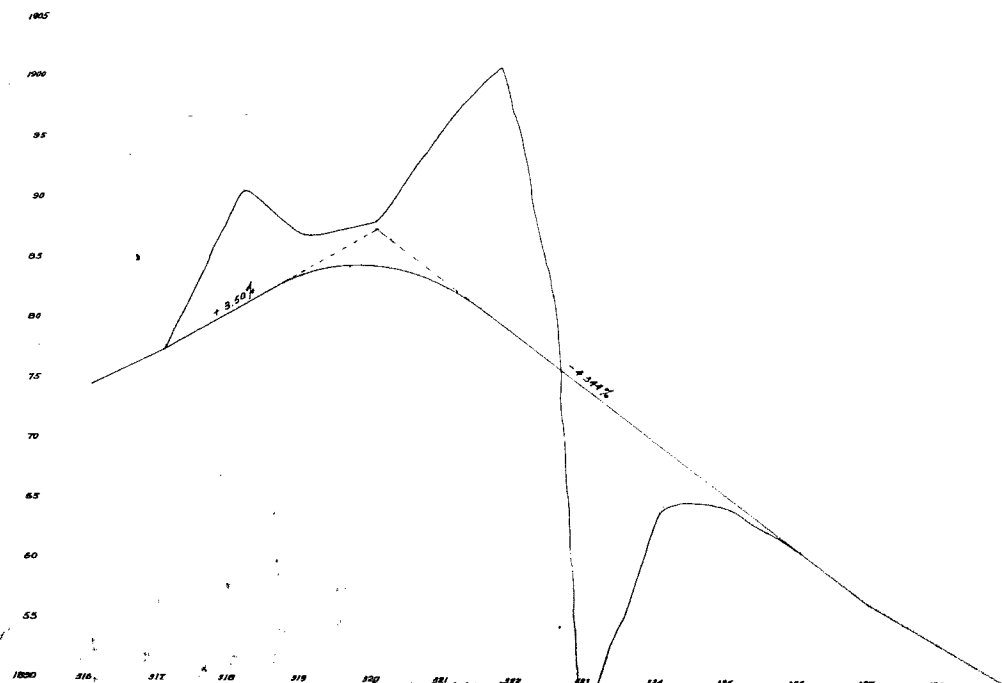
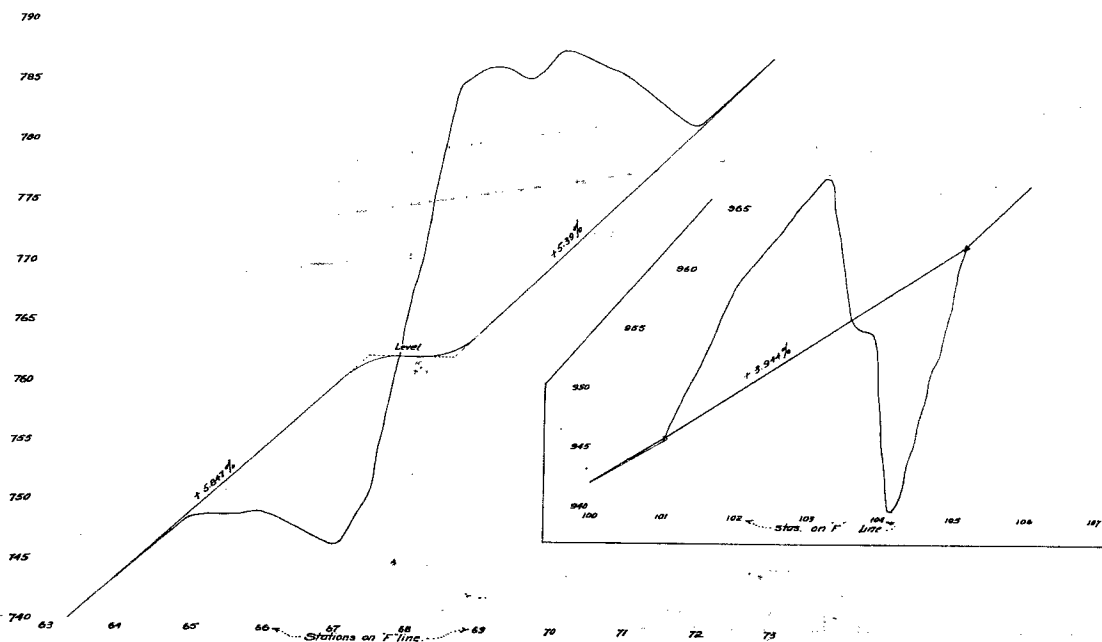
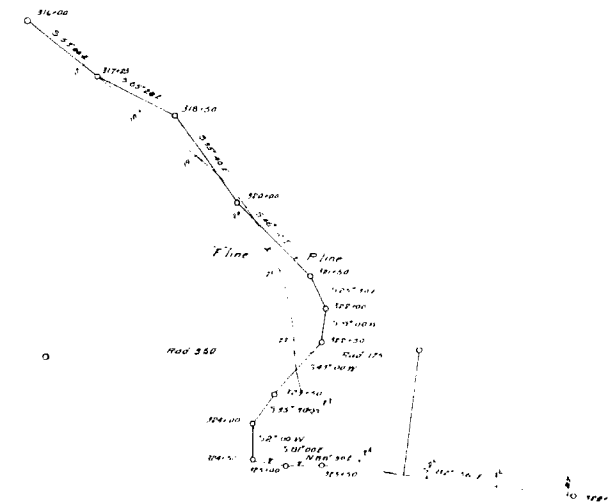
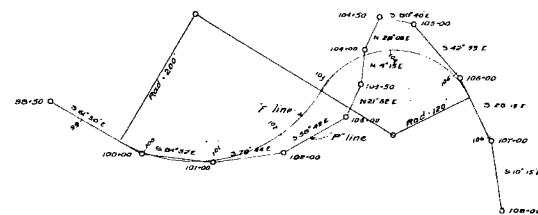
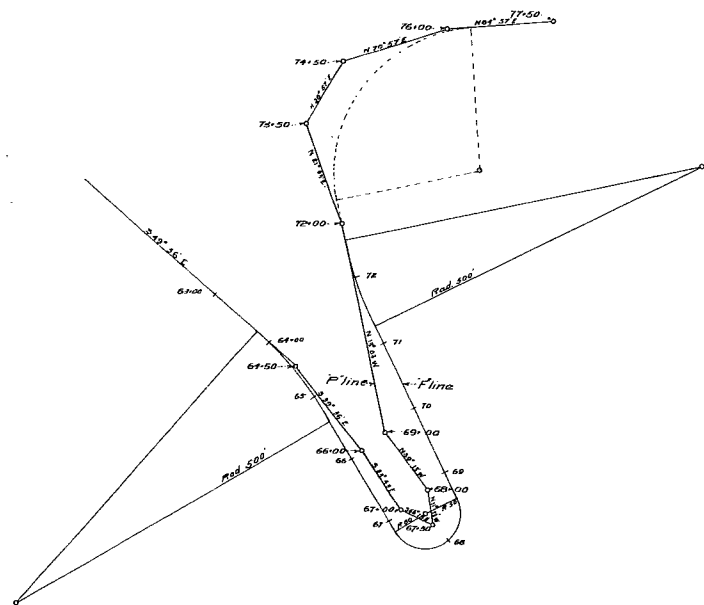
3307

IMPROVEMENT IN ALIGNMENT  
MT. HAMILTON



IMPROVEMENT IN ALIGNMENT  
MT. HAMILTON ROAD

**MICROFILM**  
Road Dist. N93  
33'



IMPROVEMENT IN ALIGNMENT  
MT. HAMILTON ROAD.

MICROFILM  
Road Dist No 2  
3307

SKETCH  
OF PROPOSED CHANGE IN MT. HAMILTON ROAD  
AROUND HUYCK SCHOOL (NOT CONSTRUCTED)

Scale: 1"=100'  
Drawn: March, 1938  
Robert B. Chandler  
County Surveyor  
Notes in T.B. 73 pg. 1-6. L.B. 108, pg. 1-23.



Sheet #15

Sheet #16

MT. HAMILTON ROAD  
SHEET 2  
376.21+30 TO 376.54+50

Station	Dist.	Elevation	Station	Dist.	Elevation
376.21+30	0.00	112.76	376.54+50	0.00	112.76
376.21+30	1.00	112.76	376.54+50	1.00	112.76
376.21+30	2.00	112.76	376.54+50	2.00	112.76
376.21+30	3.00	112.76	376.54+50	3.00	112.76
376.21+30	4.00	112.76	376.54+50	4.00	112.76
376.21+30	5.00	112.76	376.54+50	5.00	112.76
376.21+30	6.00	112.76	376.54+50	6.00	112.76
376.21+30	7.00	112.76	376.54+50	7.00	112.76
376.21+30	8.00	112.76	376.54+50	8.00	112.76
376.21+30	9.00	112.76	376.54+50	9.00	112.76
376.21+30	10.00	112.76	376.54+50	10.00	112.76
376.21+30	11.00	112.76	376.54+50	11.00	112.76
376.21+30	12.00	112.76	376.54+50	12.00	112.76
376.21+30	13.00	112.76	376.54+50	13.00	112.76
376.21+30	14.00	112.76	376.54+50	14.00	112.76
376.21+30	15.00	112.76	376.54+50	15.00	112.76
376.21+30	16.00	112.76	376.54+50	16.00	112.76
376.21+30	17.00	112.76	376.54+50	17.00	112.76
376.21+30	18.00	112.76	376.54+50	18.00	112.76
376.21+30	19.00	112.76	376.54+50	19.00	112.76
376.21+30	20.00	112.76	376.54+50	20.00	112.76
376.21+30	21.00	112.76	376.54+50	21.00	112.76
376.21+30	22.00	112.76	376.54+50	22.00	112.76
376.21+30	23.00	112.76	376.54+50	23.00	112.76
376.21+30	24.00	112.76	376.54+50	24.00	112.76
376.21+30	25.00	112.76	376.54+50	25.00	112.76
376.21+30	26.00	112.76	376.54+50	26.00	112.76
376.21+30	27.00	112.76	376.54+50	27.00	112.76
376.21+30	28.00	112.76	376.54+50	28.00	112.76
376.21+30	29.00	112.76	376.54+50	29.00	112.76
376.21+30	30.00	112.76	376.54+50	30.00	112.76
376.21+30	31.00	112.76	376.54+50	31.00	112.76
376.21+30	32.00	112.76	376.54+50	32.00	112.76
376.21+30	33.00	112.76	376.54+50	33.00	112.76
376.21+30	34.00	112.76	376.54+50	34.00	112.76
376.21+30	35.00	112.76	376.54+50	35.00	112.76
376.21+30	36.00	112.76	376.54+50	36.00	112.76
376.21+30	37.00	112.76	376.54+50	37.00	112.76
376.21+30	38.00	112.76	376.54+50	38.00	112.76
376.21+30	39.00	112.76	376.54+50	39.00	112.76
376.21+30	40.00	112.76	376.54+50	40.00	112.76
376.21+30	41.00	112.76	376.54+50	41.00	112.76
376.21+30	42.00	112.76	376.54+50	42.00	112.76
376.21+30	43.00	112.76	376.54+50	43.00	112.76
376.21+30	44.00	112.76	376.54+50	44.00	112.76
376.21+30	45.00	112.76	376.54+50	45.00	112.76
376.21+30	46.00	112.76	376.54+50	46.00	112.76
376.21+30	47.00	112.76	376.54+50	47.00	112.76
376.21+30	48.00	112.76	376.54+50	48.00	112.76
376.21+30	49.00	112.76	376.54+50	49.00	112.76
376.21+30	50.00	112.76	376.54+50	50.00	112.76
376.21+30	51.00	112.76	376.54+50	51.00	112.76
376.21+30	52.00	112.76	376.54+50	52.00	112.76
376.21+30	53.00	112.76	376.54+50	53.00	112.76
376.21+30	54.00	112.76	376.54+50	54.00	112.76
376.21+30	55.00	112.76	376.54+50	55.00	112.76
376.21+30	56.00	112.76	376.54+50	56.00	112.76
376.21+30	57.00	112.76	376.54+50	57.00	112.76
376.21+30	58.00	112.76	376.54+50	58.00	112.76
376.21+30	59.00	112.76	376.54+50	59.00	112.76
376.21+30	60.00	112.76	376.54+50	60.00	112.76
376.21+30	61.00	112.76	376.54+50	61.00	112.76
376.21+30	62.00	112.76	376.54+50	62.00	112.76
376.21+30	63.00	112.76	376.54+50	63.00	112.76
376.21+30	64.00	112.76	376.54+50	64.00	112.76
376.21+30	65.00	112.76	376.54+50	65.00	112.76
376.21+30	66.00	112.76	376.54+50	66.00	112.76
376.21+30	67.00	112.76	376.54+50	67.00	112.76
376.21+30	68.00	112.76	376.54+50	68.00	112.76
376.21+30	69.00	112.76	376.54+50	69.00	112.76
376.21+30	70.00	112.76	376.54+50	70.00	112.76
376.21+30	71.00	112.76	376.54+50	71.00	112.76
376.21+30	72.00	112.76	376.54+50	72.00	112.76
376.21+30	73.00	112.76	376.54+50	73.00	112.76
376.21+30	74.00	112.76	376.54+50	74.00	112.76
376.21+30	75.00	112.76	376.54+50	75.00	112.76
376.21+30	76.00	112.76	376.54+50	76.00	112.76
376.21+30	77.00	112.76	376.54+50	77.00	112.76
376.21+30	78.00	112.76	376.54+50	78.00	112.76
376.21+30	79.00	112.76	376.54+50	79.00	112.76
376.21+30	80.00	112.76	376.54+50	80.00	112.76
376.21+30	81.00	112.76	376.54+50	81.00	112.76
376.21+30	82.00	112.76	376.54+50	82.00	112.76
376.21+30	83.00	112.76	376.54+50	83.00	112.76
376.21+30	84.00	112.76	376.54+50	84.00	112.76
376.21+30	85.00	112.76	376.54+50	85.00	112.76
376.21+30	86.00	112.76	376.54+50	86.00	112.76
376.21+30	87.00	112.76	376.54+50	87.00	112.76
376.21+30	88.00	112.76	376.54+50	88.00	112.76
376.21+30	89.00	112.76	376.54+50	89.00	112.76
376.21+30	90.00	112.76	376.54+50	90.00	112.76
376.21+30	91.00	112.76	376.54+50	91.00	112.76
376.21+30	92.00	112.76	376.54+50	92.00	112.76
376.21+30	93.00	112.76	376.54+50	93.00	112.76
376.21+30	94.00	112.76	376.54+50	94.00	112.76
376.21+30	95.00	112.76	376.54+50	95.00	112.76
376.21+30	96.00	112.76	376.54+50	96.00	112.76
376.21+30	97.00	112.76	376.54+50	97.00	112.76
376.21+30	98.00	112.76	376.54+50	98.00	112.76
376.21+30	99.00	112.76	376.54+50	99.00	112.76
376.21+30	100.00	112.76	376.54+50	100.00	112.76

3307

3307