

THIS SHEET SHOWS PARCEL 8.

CURTIS AVENUE

542.85

N 66°59'30"E 1700.00

416.45

Δ=43°36'10"  
R=29.00  
L=22.07

40.00

N 66°59'30"E 542.85

N 66°59'30"E 1772.88

9.19  
40.00  
2.02  
10.25

40'

40'

L=10.53  
R=19.00  
Δ=31°45'25"

25' PRIVATE LANDSCAPING  
EASEMENT (L.E.)

10' P.S.U.E.  
DEDICATED HEREIN  
ALSO 10' PRIVATE  
UTILITY EASEMENT  
FOR BENEFIT OF  
PARCELS 5 & 7.

SEE SHEET 10  
FOR EASEMENT  
INFORMATION

LEGEND

- S.D.E. INDICATES STORM DRAINAGE EASEMENT.
- INDICATES STANDARD CITY STREET MONUMENT PER 570 M. 39-41.
- P.S.U.E. INDICATES PUBLIC SERVICES UTILITY EASEMENT.
- P.A.E. INDICATES PRIVATE ACCESS. EASEMENT.
- ////// INDICATES NON-ACCESS. (L.E.) INDICATES LANDSCAPE EASEMENT.
- INDICATES SET 3/4" IRON PIPE WITH TAG R.C.E. 13.776.
- (R) INDICATES RADIAL BEARING.
- O.R. INDICATES OFFICIAL RECORDS.

PARCEL 9

SEE SHEET 10

PARCEL 7

SEE SHEET 8

COMET DRIVE  
(PRIVATE ROAD)

N 23°00'30"W 366.69

N 23°00'30"W 361.69

10' P.S.U.E.  
DEDICATED HEREIN.

FUTURE P.G. SE. AND  
PAC BELL EASEMENT

PRIVATE UTILITY EASEMENT  
FOR BENEFIT OF PARCEL 11

10' P.S.U.E.  
DEDICATED HEREIN.

S 78°48'41"W 368.62

N 78°48'41"E 503.29

EASEMENTS THIS AREA  
SEE DETAIL "B".

131.81

18.14

212.88

L=45.55  
R=29.00  
Δ=90°00'00"  
P.S.U.E.

PRIVATE ACCESS EASEMENT  
FOR BENEFIT OF ALL PARCELS  
SHOWN ON THIS MAP.

GREAT MALL DRIVE  
(PRIVATE ROAD)

S 66°59'30"W 521.85

58.23

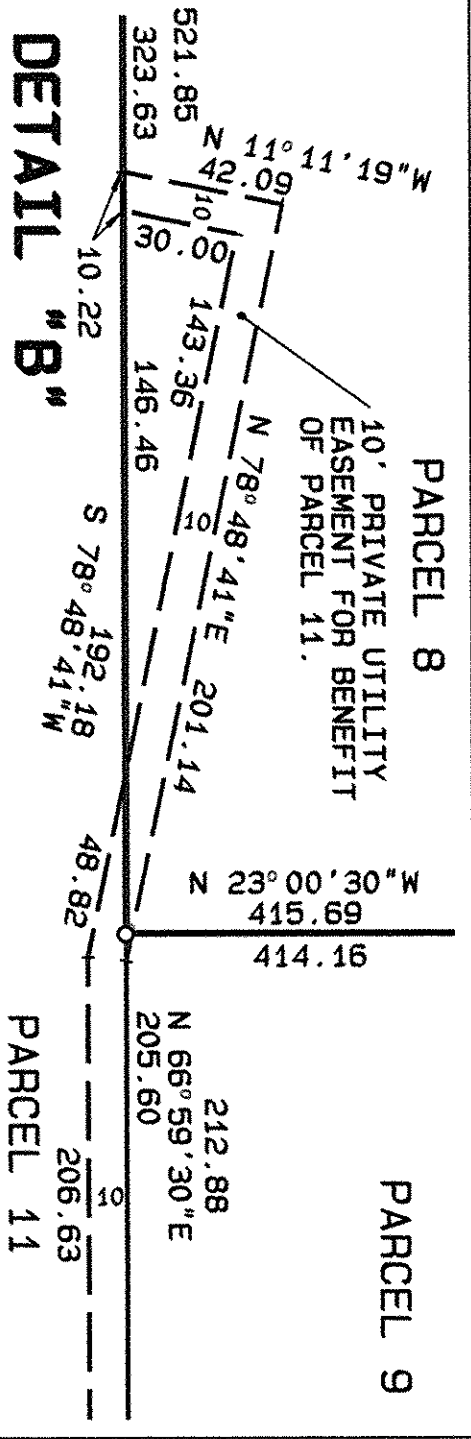
10' PRIVATE UTILITY  
EASEMENT FOR BENEFIT  
OF ALL PARCELS

PARCEL 11

SEE SHEET 11

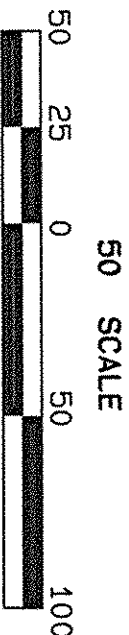
PARCEL MAP  
THE GREAT MALL

\*\*\*\*\*  
BEING A RESUBDIVISION OF PARCELS 2, 3, 4 AND 5  
AS SHOWN ON THAT CERTAIN "PARCEL MAP"  
FILED IN BOOK 570 MAPS, AT PAGES 39, 40 AND 41  
SANTA CLARA COUNTY RECORDS  
LYING WITHIN THE CITY OF MILPITAS  
COUNTY OF SANTA CLARA, STATE OF CALIFORNIA  
\*\*\*\*\*  
DATED: DECEMBER, 1993 SCALE: 1"=50'



Δ	DELTA/BEARING	RADIUS	LEN./DIST.	TANGENT
1	N 66°59'30"E	20.00	29.85	19.00
2	90°00'00"	19.00	29.85	19.00
3	90°00'00"	4.00	6.28	4.00

DATA



SCALE: 1" = 50'

652  
43