

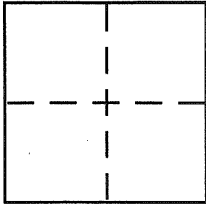
# CORNER RECORD

01-117.13 cr 088  
CR 1555

Document Number \_\_\_\_\_

City of CASTRO VALLEY (UNINCORP.) County of ALAMEDA, California

Brief Legal Description LOT 22, BLOCK D, TRACT 1639 (37M14)



## CORNER TYPE

Government Corner ☐ Control ☐  
Meander ☐ Property ☒  
Rancho ☐ Other ☐  
Date of Survey JULY 18, 2001

## COORDINATES (Optional)

N. \_\_\_\_\_  
E. \_\_\_\_\_  
Zone \_\_\_\_\_ NAD27 ☐ NAD83 ☐  
NAD83 Epoch \_\_\_\_\_  
Elev. \_\_\_\_\_  
Vert. Datum: NGVD29 ☐ NAVD88 ☐  
Meas. Units: Metric ☐ Imperial ☐

Corner - Left as found ☐ Found and tagged ☐ Established ☒ Reestablished ☐ Rebuilt ☐

Identification and type of corner found: Evidence used to identify or procedure used to establish or reestablish the corner:

FOUND TRACT PIN MONUMENT PER 37M14

A description of the physical condition of the monument as found and as set or reset:

SET 3/8" REBAR & PLASTIC CAP LS 5252  
SET TAG LS 5252

## SURVEYOR'S STATEMENT

This Corner Record was prepared by me or under my direction in conformance with the Land Surveyor's Act on JULY 20 2001

Signed Jeffrey D. Black P.L.S or R.G.E. No. 5252

## COUNTY SURVEYOR'S STATEMENT

This Corner Record was received 8-30-2001

and examined and filed 11-29-2001

Signed Russell R. Penland, Jr. P.L.S or R.G.E. No. 5726

Title COUNTY SURVEYOR

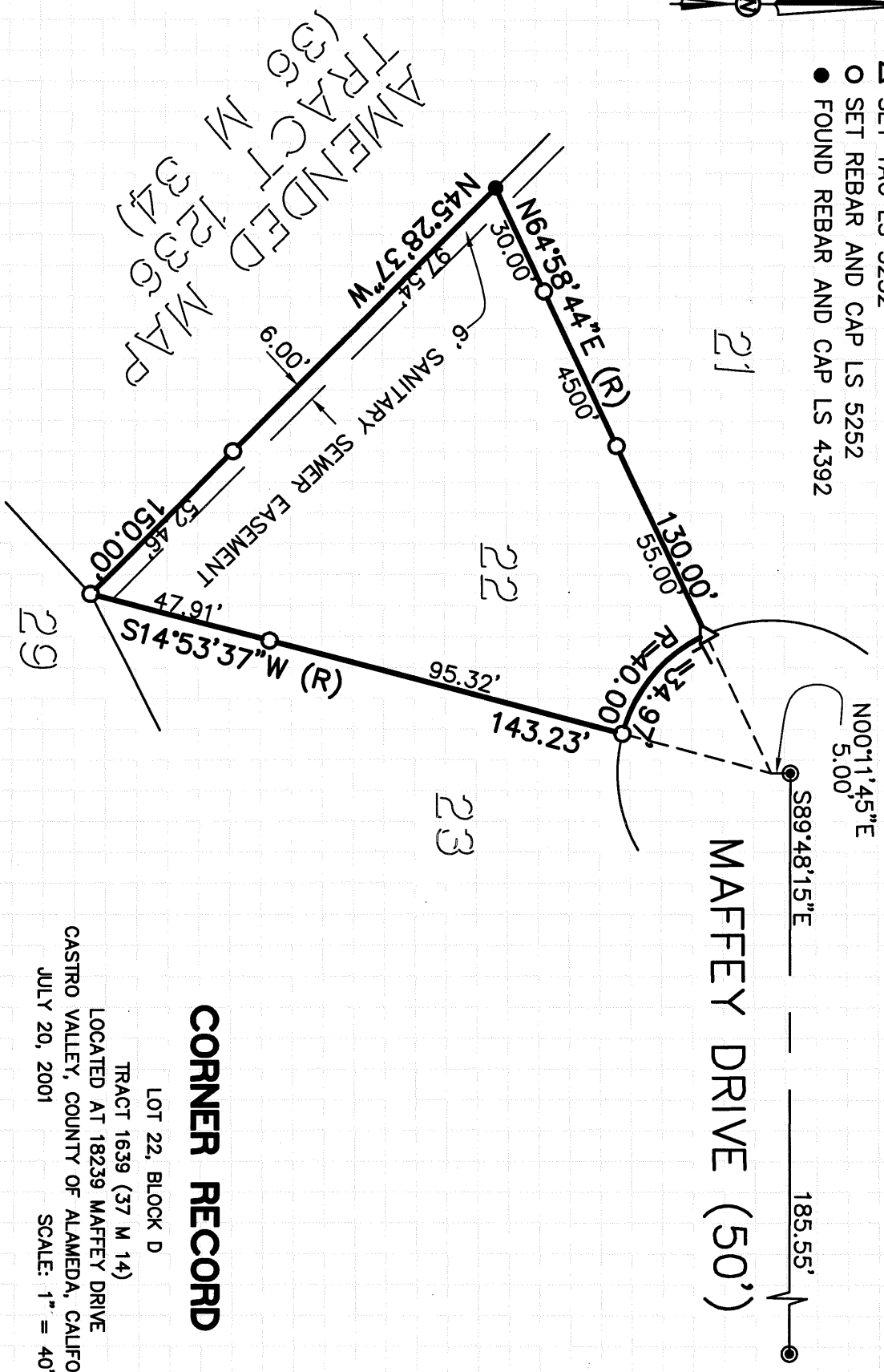
County Surveyor's Comment \_\_\_\_\_





**LEGEND**

- FOUND SUBDIVISION PIN MONUMENTS PER 37 M 14
- △ SET TAG LS 5252
- SET REBAR AND CAP LS 5252
- FOUND REBAR AND CAP LS 4392



**CORNER RECORD**

LOT 22, BLOCK D  
TRACT 1639 (37 M 14)  
LOCATED AT 18239 MAFFEY DRIVE  
CASTRO VALLEY, COUNTY OF ALAMEDA, CALIFORNIA  
JULY 20, 2001  
SCALE: 1" = 40'

F.B. NO. 877      MAFFEY-CRDWG      JOB NO. 01-5167